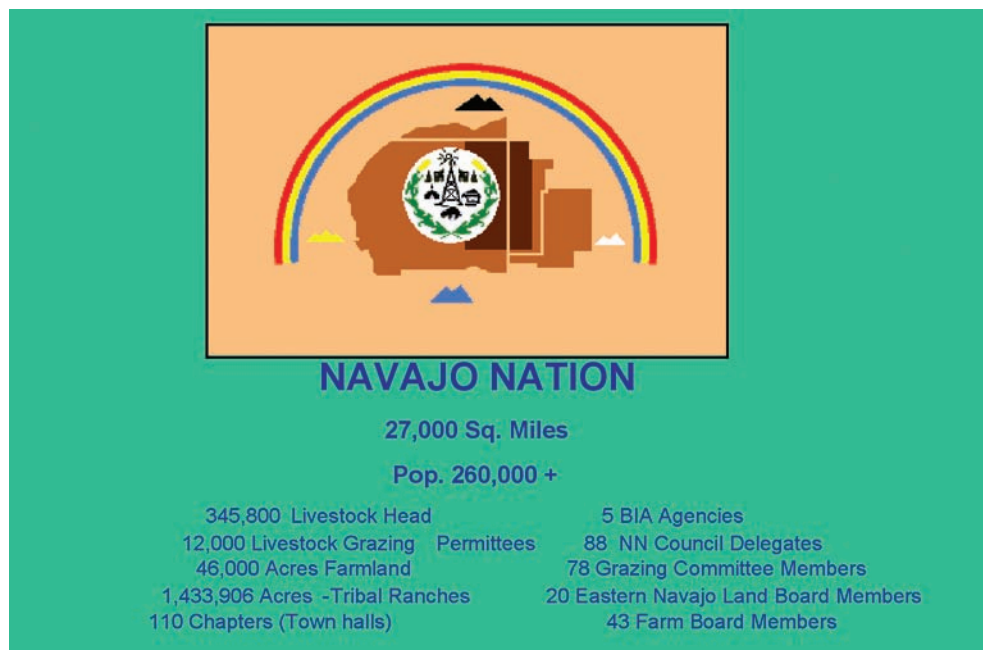


# THE NAVAJO NATION QUICK FACTS

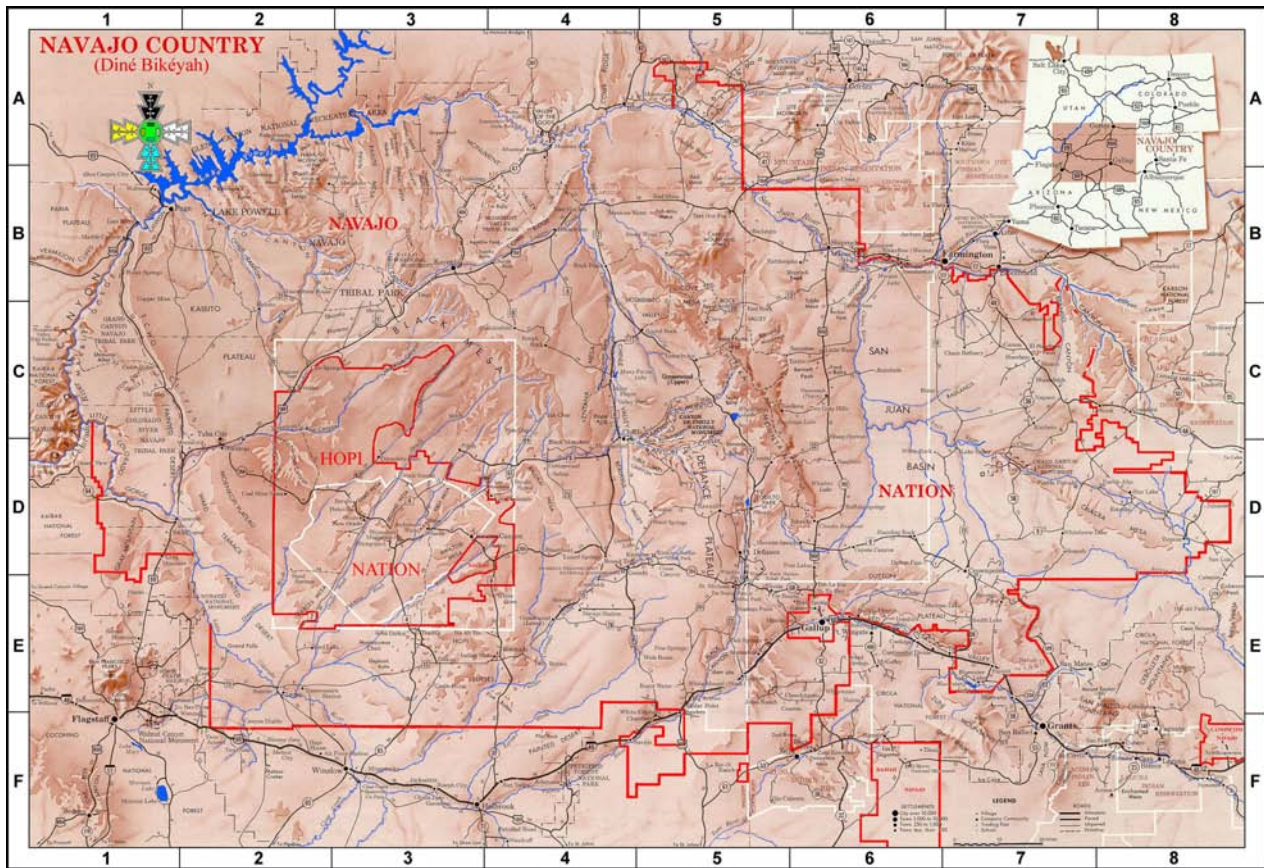


Consisting of 27,000 square miles in the states of Arizona, New Mexico, and Utah, the Navajo Nation, geographically, is the largest Native American reservation in the U.S. The area of the reservation is greater than that of the states of Massachusetts, New Hampshire, and Vermont combined. The Navajo Nation claims approximately 298,000 enrolled members; it is the second largest tribe in population; over 173,000 Navajos live on the reservation. The population has increased 3.5 times from the 50,000 people who resided on the reservation in 1940. Most homes do not have electricity, running water, or telephones. The Navajo Nation has no urban centers, and most roads remained unpaved (U.S. Census, 2007; Navajo Division of Economic Development, 2008). According to the 2000 census 298,215 persons declared Navajo ancestry or tribal affiliation. An individual must be at least one-quarter Navajo in order to be an enrolled tribal member, according to Navajo law. Kayenta is the only incorporated township. Most population centers are clusters

of housing around schools, hospitals, trading posts, and chapter houses. Navajos generate an estimated \$40.5 million in the informal economy. Much of this undocumented income is derived from family-based agriculture and crafts enterprises. While data paints a picture of poverty and desolation, Navajo people still have their strong family bonds, their land and most enjoy a rich cultural, spiritual, and daily life based on small-scale farming and ranching. These human strengths, traditional lifestyles, knowledge, values, and resources are the foundation of the Navajo people (DINÉ).

Any research studies of the Navajo Nation require documents and interviews with the Internal Review Board for Human Subject studies, and a second interview with Department of Historic Preservation for any cultural aspects of the study.

For other data information on Navajo Nation try the web site address at [www.factfinder.census.gov](http://www.factfinder.census.gov).



## References

- Downs, James F. (1972). *The Navajo*. New York: Holt, Rinehart, and Winston.
- Gilpin, Laura. (1968). *The Enduring Navaho*. Austin: University of Texas Press.
- Kluckholm, Clyde & Leighton, Dorothea (1946). *The Navaho*. Cambridge: Oxford University Press.
- Navajo Nation Division of Economic Development (July 17, 2008). Retrieved from <http://www.navajobusiness.com/pdf/CEDS/CEDS%202002-03.pdf>
- Plog, Stephen. *Ancient Peoples of the American Southwest*. Thames and London, LTD, London, England, 1997.
- Underhill, Ruth M. (1956). *The Navahos*. Norman: The University of Oklahoma Press.
- U.S. Census (2007, July 17). *Quick facts*. Retrieved from <http://www.factfinder.census.gov>.



**THE UNIVERSITY OF ARIZONA**  
**COLLEGE OF AGRICULTURE AND LIFE SCIENCES**  
**TUCSON, ARIZONA 85721**

### GERALD R. MOORE

Federally Recognized Tribal Extension Program Agent, Navajo Reservation, Window Rock, Coordinating Extension Agent, Navajo Extension Program

### JEANNIE BENALLY

Federally Recognized Tribal Extension Program Agent, Navajo Reservation, Shiprock

### DR. SABRINA TUTTLE

Federally Recognized Tribal Extension Program Agent, San Carlos Apache Reservation and Assistant Professor, Department of Agricultural Education

### CONTACT:

**DR. SABRINA TUTTLE**  
 SABRINAT@AG.ARIZONA.EDU

THIS INFORMATION HAS BEEN REVIEWED BY UNIVERSITY FACULTY.  
[cals.arizona.edu/pubs/natresources/az1471.pdf](http://cals.arizona.edu/pubs/natresources/az1471.pdf)

Issued in furtherance of Cooperative Extension work, acts of May 8 and June 30, 1914, in cooperation with the U.S. Department of Agriculture, James A. Christenson, Director, Cooperative Extension, College of Agriculture & Life Sciences, The University of Arizona.

The University of Arizona is an equal opportunity, affirmative action institution. The University does not discriminate on the basis of race, color, religion, sex, national origin, age, disability, veteran status, or sexual orientation in its programs and activities.