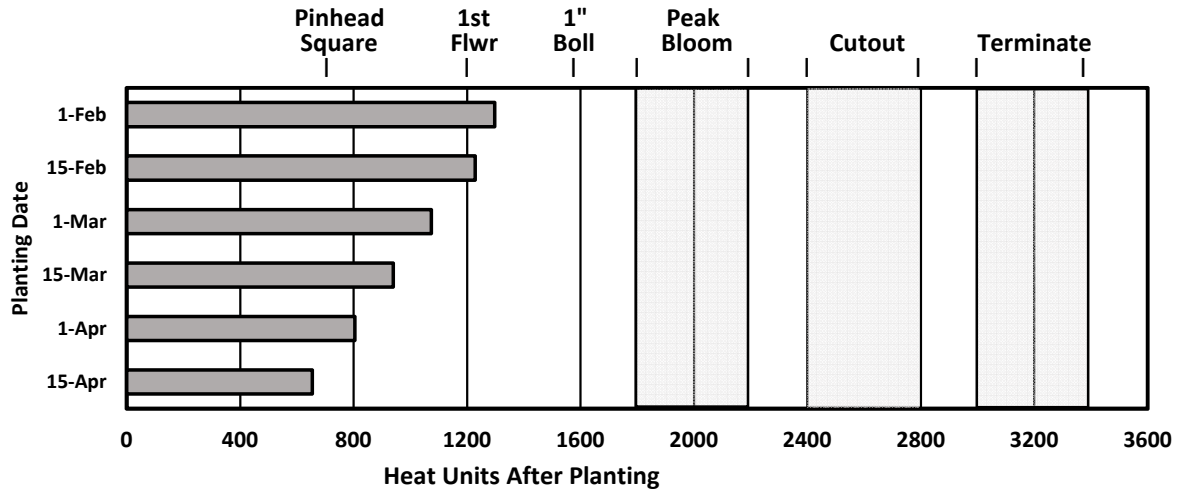


**Yuma Valley Cotton Development Advisory
May 18, 2020**



Heat Units After Planting						
Planted:	1-Feb	15-Feb	1-Mar	15-Mar	1-Apr	15-Apr
2020:	1297	1228	1074	940	805	654
Normal:	1306	1216	1117	981	777	588
2019:	1319	1259	1190	1071	842	614
Water Use:	1.22	1.11	0.88	0.68	0.48	0.42

Temperature & Heat Units								
Last Week				This Week				
	Max	Min	HUs	Rain		Max	Min	HUs
Actual	94	63	151	0.00	2019	83	55	97
Normal:	94	60	143		Normal:	94	61	145

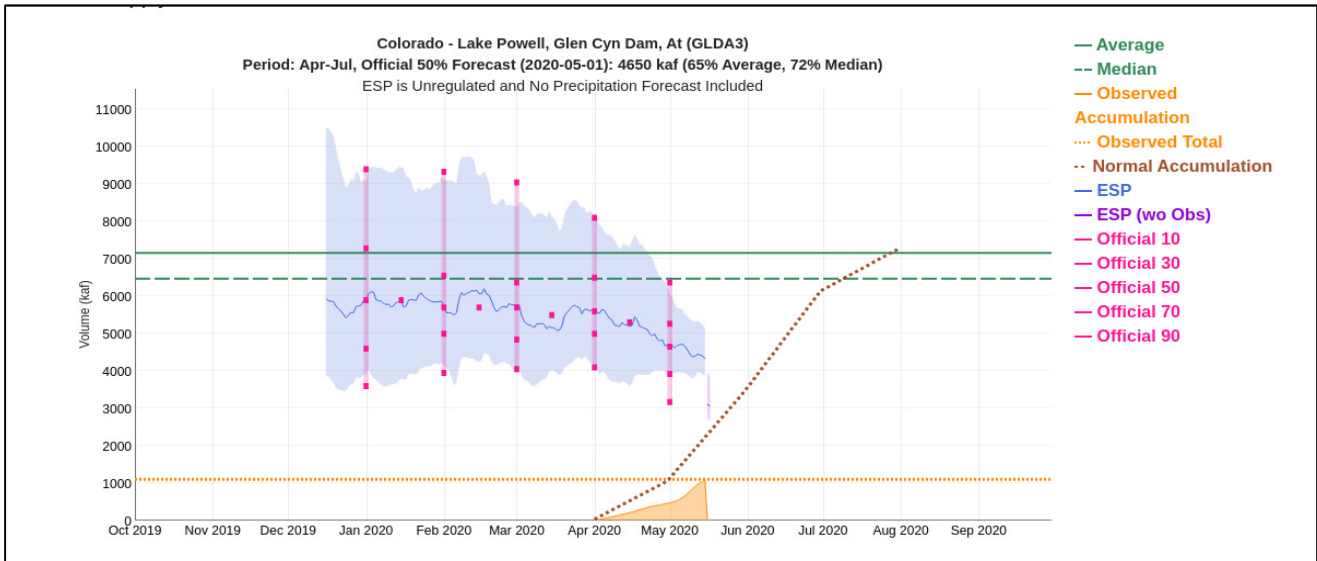
Cotton Heat Stress						
Date						
5/11	5/12	5/13	5/14	5/15	5/16	5/17
NS	NS	NS	NS	NS	NS	NS

NS: No Stress; L1: Level 1; L2: Level 2

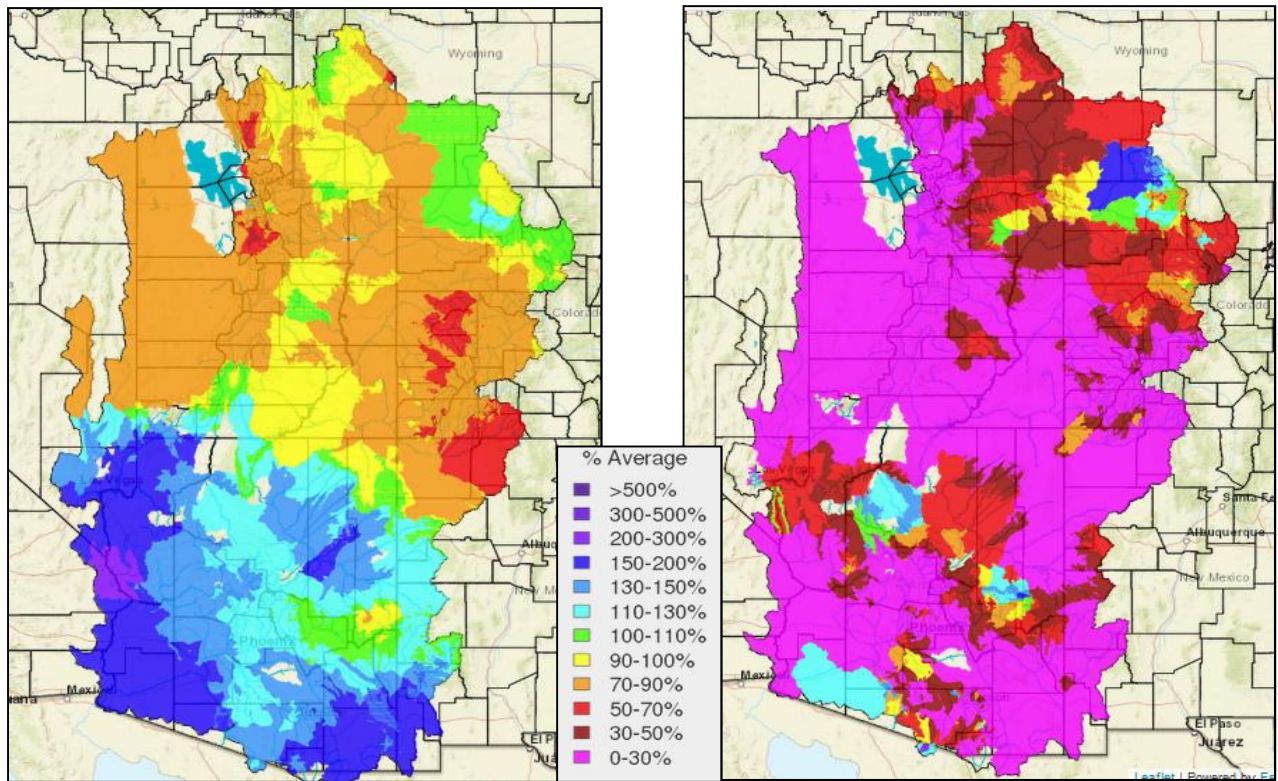
Weather Forecast

A dry storm system will pass through the Great Basin early this week producing windy conditions early in the work week. Hot temperatures on Monday will give way to a dramatic cooling trend driving temperatures to below normal levels by Wednesday. Sunny and dry conditions with near normal temperatures are expected for the latter half of the week. The 6-10 day forecast for next week exhibits no bias suggesting near normal temperature and precipitation for this time of year.

Colorado River Update



Projections for Colorado River flow into Lake Powell (Apr-Jul) continue to show no improvement due to dry spring weather. The official 15 May forecast is 4.65 MAF while ESP model that is updated daily has declined to 4.33 MAF). Long-term median and average spring flows are 6.47 and 7.16 MAF, respectively. Source: NOAA Colorado Basin River Forecast Center.



Below normal precipitation in the Upper Colorado Basin is responsible for the poor spring flow. The maps above show the percent of normal precipitation for the Water Year through 30 April (left) and for May to date (right). Source: NOAA Colorado Basin River Forecast Center.