

Heat Units After Planting						
Planted:	1-Feb	15-Feb	1-Mar	15-Mar	1-Apr	15-Apr
2020:	1211	1147	1025	897	764	615
Normal:	1222	1136	1046	917	721	548
2019:	1151	1099	1039	937	738	548
Water Use:	0.92	0.84	0.69	0.53	0.38	0.35

Temperature & Heat Units								
Last Week				This Week				
	Max	Min	HUs	Rain		Max	Min	HUs
Actual	93	58	133	0.00	2019	83	52	93
Normal:	96	57	133		Normal:	96	58	137

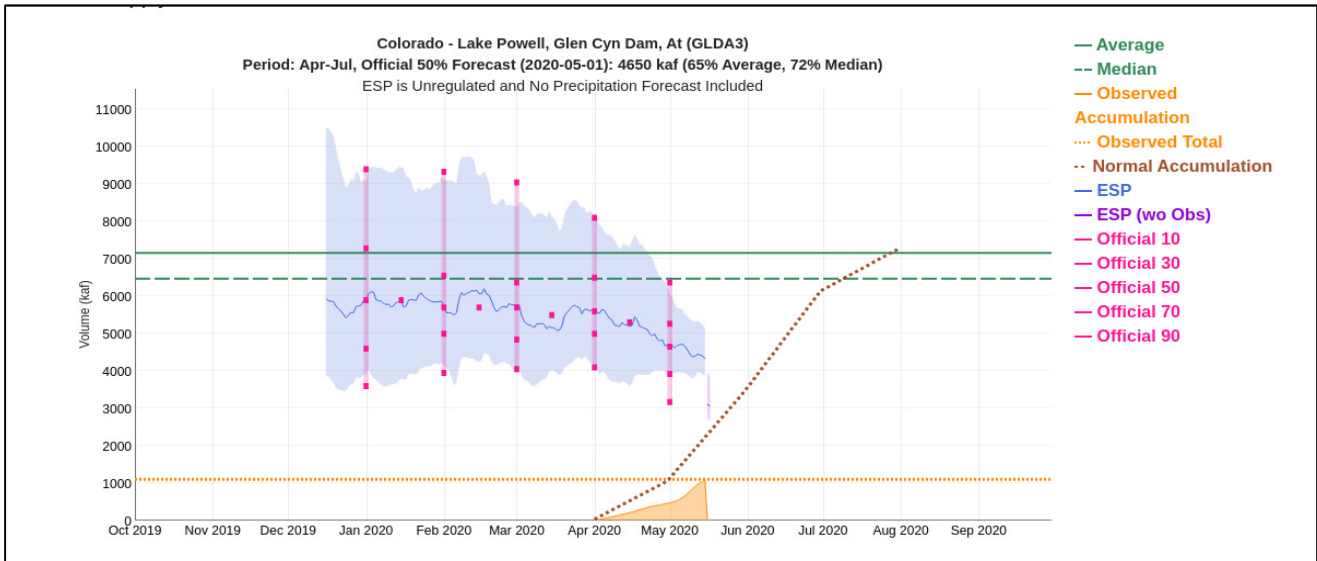
Cotton Heat Stress						
Date						
5/11	5/12	5/13	5/14	5/15	5/16	5/17
NS	NS	NS	NS	NS	NS	NS

NS: No Stress; L1: Level 1; L2: Level 2

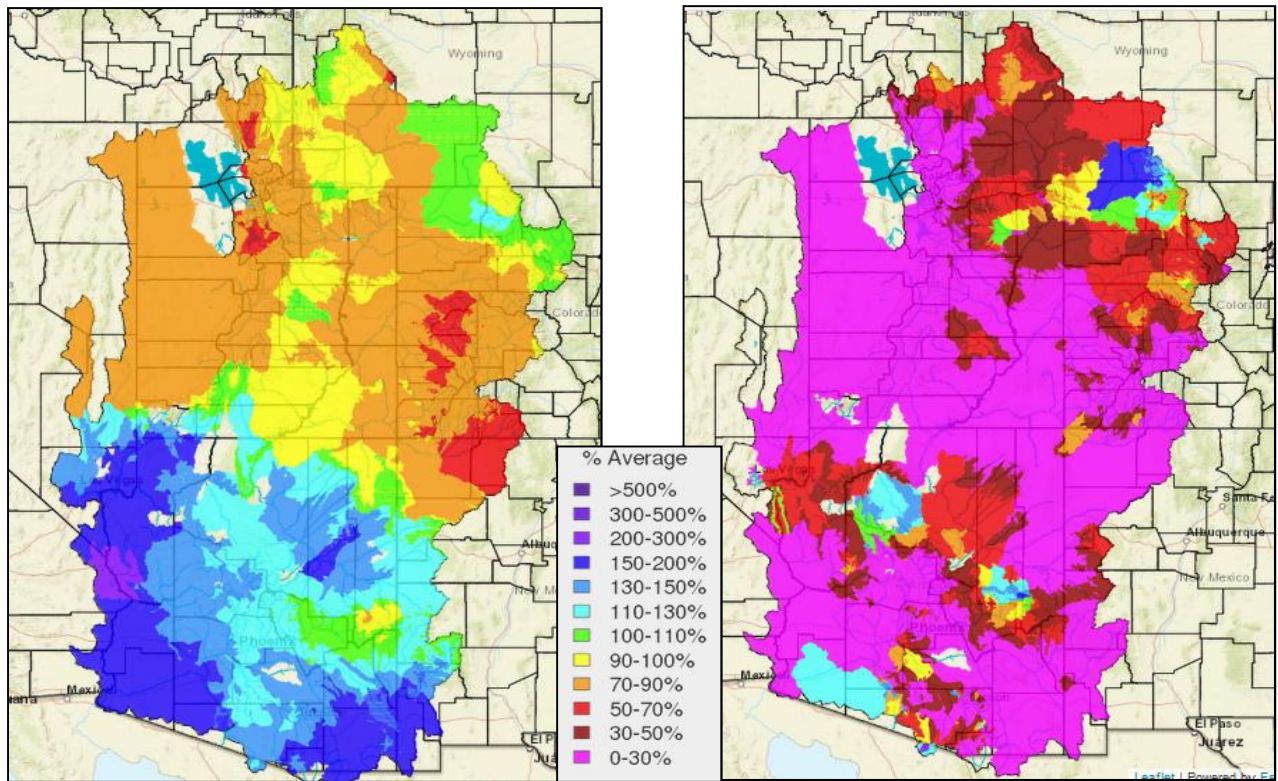
### Weather Forecast

A dry storm system will pass through the Great Basin early this week producing windy conditions early in the work week. Hot temperatures on Monday will give way to a dramatic cooling trend driving temperatures to below normal levels by Wednesday. Sunny and dry conditions with near normal temperatures are expected for the latter half of the week. The 6-10 day forecast for next week exhibits no bias suggesting near normal temperature and precipitation for this time of year.

## Colorado River Update



**Projections for Colorado River flow into Lake Powell (Apr-Jul) continue to show no improvement due to dry spring weather. The official 15 May forecast is 4.65 MAF while ESP model that is updated daily has declined to 4.33 MAF). Long-term median and average spring flows are 6.47 and 7.16 MAF, respectively. Source: NOAA Colorado Basin River Forecast Center.**



**Below normal precipitation in the Upper Colorado Basin is responsible for the poor spring flow. The maps above show the percent of normal precipitation for the Water Year through 30 April (left) and for May to date (right). Source: NOAA Colorado Basin River Forecast Center.**