



Cooperative Extension

University of Arizona

# Pima County Cooperative Extension

Providing practical education and experiences to help people make their lives better. Our programs help youth thrive, give people tools to create healthier lives, and support our natural environment and economy.



**2022 Annual Report**



# Pima County Cooperative Extension

## 2022 Annual Report



Agriculture &  
Natural Resources



4-H Youth  
Development



Family, Consumer  
and Health Sciences



We respectfully acknowledge the University of Arizona is on the land and territories of Indigenous peoples. Today, Arizona is home to 22 federally recognized tribes, with Tucson being home to the O’odham and the Yaqui. Committed to diversity and inclusion, the University strives to build sustainable relationships with sovereign Native Nations and Indigenous communities through education offerings, partnerships, and community service.

### Table of Contents

<b>From the Director</b> .....	3	<b>Family, Consumer and Health Sciences</b> .....	13
<b>Organization</b> .....	4	Family Engagement Program .....	14
<b>Advisory Boards and Committees</b> .....	5	SNAP Education / The Garden Kitchen.....	15
<b>Agriculture and Natural Resources</b> .....	6	Expanded Food and Nutrition Education Program.....	16
The Master Gardener Program .....	7	<b>Financial</b> .....	17
Smartscape.....	8	<b>PCCE Contact, Staff List, and Locations</b> .....	18
Livestock and Crop Assistance .....	9		
<b>4-H Youth Development</b> .....	10		
4-H Club Program .....	11		
4-H Tucson Village Farm.....	12		

---

## From the Director

2022 was a year of growth for the University of Arizona Pima County Cooperative Extension and I am delighted to share some of our highlights in this Annual Report. Our goal is to provide practical information and education to help people make their lives better, and in 2022 we provided over 100,000 hours of programming with nearly 36,000 engagements in Pima County. Each month, we share Pima Extension highlights and encourage participation with more than 12,000 stakeholders through listservs and our bi-monthly e-newsletter, *The Round Up*.



There are several reasons our reach grew by 35% in 2022 as compared to 2021. As we returned to in-person education, we also maintained virtual options, and then as financial support grew, more staff were hired to expand programs. During 2022 Pima Extension faculty and leads did an outstanding job tracking and applying for grants and building contracts, bringing our totals up by nearly 70% as compared to 2021. Cost-recovery grew while philanthropic support remained strong to help build facilities and create scholarship opportunities for youth. State Legislature support helped us increase hours for part time workers and make needed safety improvements. Financial support from Pima County moved to a flexible Appropriations Agreement mechanism and began to finance collaborative projects such as 4-H on-ranch education and invasive species outreach.

I hope this report gives you a better understanding of the many ways we work to help people improve their lives and find new opportunities. Numbers alone do not convey the excited ruckus as 30 children clamor to cook healthy food at Tucson Village Farm, or the beauty of new connections between a prison inmate and their child because of parenting tools learned through the Family Engagement Program. We can't easily measure the impact of the 20,000 engagements made by Pima Master Gardeners, but we witness the excitement as community members discover a new plant or latch onto better desert landscaping methods. The "spark" of a 4-H child showing their animal at the Fair, the young parent building healthy nutrition habits, people coming together through a shared garden are at the core of our extension mission and motivate us every day.

Please join me in thanking our many volunteers, advisory board members, and community partners for their time and dedication. Their support and efforts are so important to us and to our stakeholders. I invite you to learn about our organization and our diverse programming through this report and to join us for more exceptional experiences in the coming year.

**Claire L. Zucker**

Director, Pima County Cooperative Extension

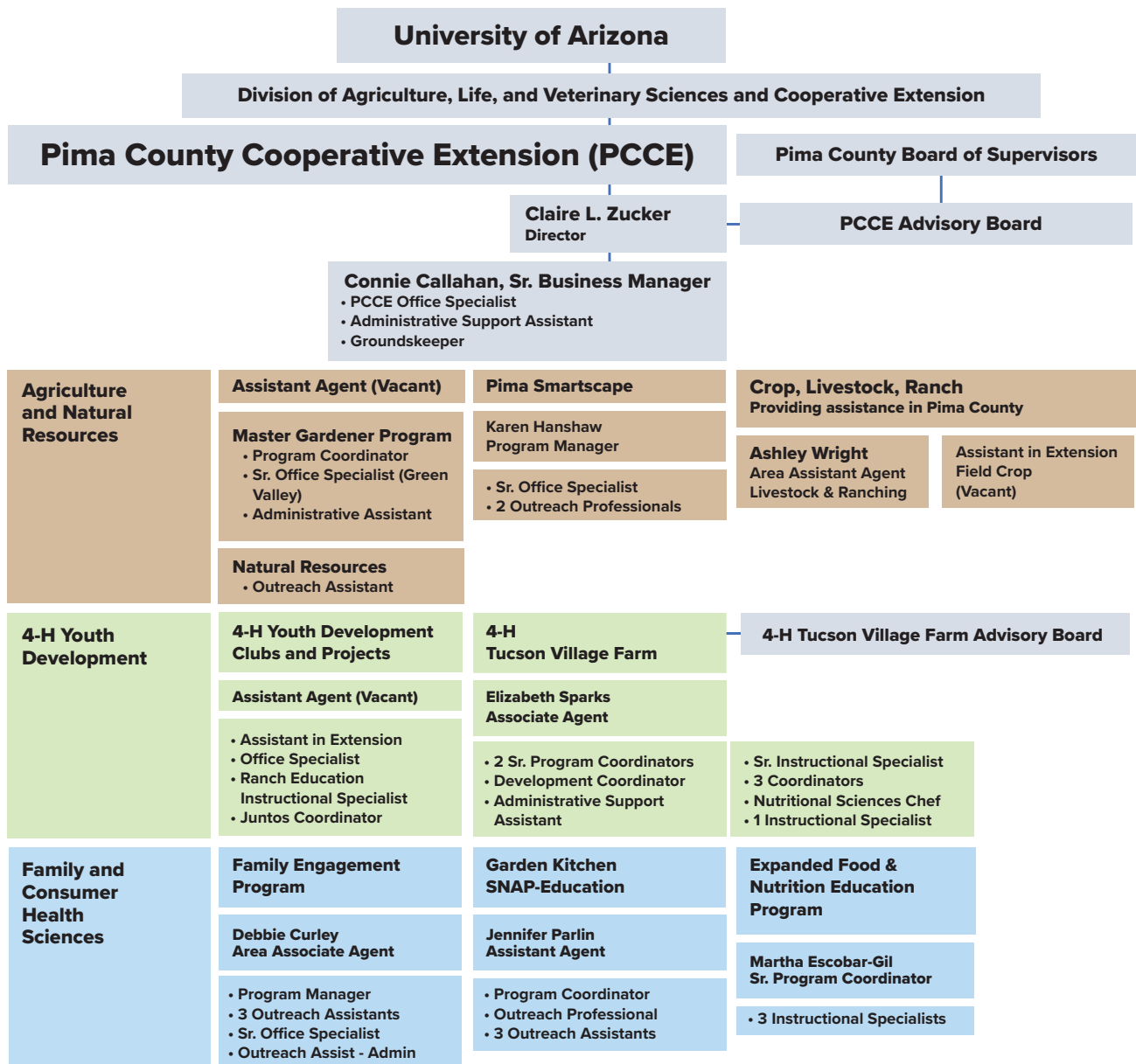
[clzucker@email.arizona.edu](mailto:clzucker@email.arizona.edu)

# Pima County Cooperative Extension Organization

Pima County Cooperative Extension (PCCE) is an Extension Unit of the University of Arizona, housed under the Division of Agriculture, Life, and Veterinary Sciences and Cooperative Extension. We have four locations in Pima County:

- PCCE Main Office, 4210 N Campbell Avenue, Tucson, AZ 85719, <https://extension.arizona.edu/pima>
- 4-H Healthy Living Center, 2201 E Roger Rd, Tucson, AZ 85719
- The Garden Kitchen, 2205 S 4th Ave, Tucson, AZ 85713
- PCCE Green Valley Office, 530 E Whitehouse Canyon Rd, Green Valley, AZ 85622

The following chart provides an overview of our organizational structure. Additional information including a list of faculty and staff, a financial summary, and contact information can be found on pages 14-16 of this report.



---

# Advisory Boards and Committees

## Pima County Cooperative Extension Advisory Board

Per ARS Title 3, the Pima County Board of Supervisors appoints our seven-person Pima County Cooperative Extension Advisory Board. Our Advisory board meets on a quarterly basis and all meetings are open to the public. Agendas are posted on our website at <https://extension.arizona.edu/pima>, in paper copy at our offices, 4210 N. Campbell Avenue, Tucson, AZ, and at the Pima County Administration Building, 130 W. Congress Street, Tucson, AZ. Meetings are held in a hybrid format, with some people attending online and others attending at the PCCE Main office. Our Advisory boards provide essential input to help us achieve our goals. Per UArizona guidance, external advisory boards are not governing bodies, but they do provide direction, build networks and partnerships, and help raise funds via philanthropy.

During 2022, the Board of Supervisors appointed five new members to our Advisory Board. These members were replacing Héctor Campoy and Daniel Pacheco, who resigned in June 2022, and Lloyd “Gabe” Gabriel, Cheryl Bakari, and Kelly Cook who stepped down in late 2021. We are indebted to all these members’ many years of service and welcome our new members to the board.

### Continuing Members:

- Rick Frey, Chair, Contributor to PCCE integrated pest management, owner ARBICO Organics
- Micaela K. McGibbon, 4-H leader and Santa Rita Ranch

### 2022 Appointed Members:

- Celia Burkel, President, 4-H Executive Council, owner R W Burkel Contracting Inc., Appointed January 5, 2022
- Alana Mozar, Nutrition Services Director, Child-Parent Centers, Inc., Appointed January 5, 2022
- Amanda Ruboyianes, TVF Advisory Board, owner ENPICA LLC, Appointed March 1, 2022
- Justin Byrd, Pima County Realtor, 4th Generation Farmer and Operations Manager for Arizona Organic Bean, Appointed December 6, 2022
- Jaqueline Bruhn, Master Gardener and Volunteer, Appointed December 6, 2022

### 2022 Resigned Members:

- Héctor Campoy, Resigned June 2022
- Daniel Pacheco, Resigned June 2022

## 4-H Tucson Village Farm Advisory Board

4-H Tucson Village Farm’s dynamic and engaged Advisory Board helps build and guide programmatic and financial sustainability.

- |                                  |                  |                     |
|----------------------------------|------------------|---------------------|
| • Susan Kentosh<br>(Board Chair) | • Robin Kropp    | • Kuumba Piazza     |
| • Kathy Alexander                | • Nancy Laney    | • Bassil Ramadan    |
| • David Benton                   | • Nancy Landes   | • Amanda Ruboyianes |
| • Martha Gilliland               | • Barbara LaWall | • Richard White     |
| • Steve Gottlieb                 | • Paul Lindsey   | • Ann Wilds         |
| • Curtis Jones                   | • Elijah Parent  | • Cliff Wood        |
|                                  | • Sadie Parent   |                     |





## Agriculture and Natural Resources

Residents and growers have ready access to research-based horticultural information at Pima Extension. University-trained Master Gardener volunteers teach about best practices for gardening in our desert setting and the Pima Smartscape Program educates and trains about water conservation, xeriscape, irrigation, and more. Invasive species outreach helps Pima County residents care for our natural desert resources.



The twice-yearly Pima Master Gardener plant sales attract more than 1000 people. The sales bring affordable plants to Pima County gardeners and raise funds to support the program outreach and education.





## The Master Gardener Program

The Pima Extension Master Gardener Program helps Pima County community members create healthy outdoor spaces, enhance biodiversity, and strengthen their knowledge, appreciation, and conservation of our Sonoran Desert Landscape. Our **180 Master Gardeners** provide advice and education to the public, maintain demonstration gardens, and provide technical assistance for community, organization, and home gardens. The demonstration gardens, located at the Tucson and Green Valley offices, offer illustrations of numerous gardening techniques. This year the Tucson Garden also grew and donated 314 lbs. of fresh produce to the Casa Maria Soup Kitchen.

In 2022, the Master Gardener Program reached approximately **20,000 people** and invested **23,594 hours** of volunteer service in Pima County. Through Facebook, the Master Gardener Program had over 304,812 views and 23,052 engagements.

94 Master Gardener online presentations and 16 in-person presentations reached **6,483 participants** with information about garden planning, plant selection, irrigation, pruning, and more.

**2,135 public inquiries** through the online, email, and the Green Valley in-person Plant Clinic, received

informative responses to questions about garden-related topics such as pest control, plant health, water use, and landscaping.

The Green Valley location hosted their first ever plant sale and added a **propagation area with shade and a seating area** for the public to enjoy.

1138 people took part in the Home Garden Tour, and over **2,500 people visited the Tucson demonstration garden**, the largest free botanical garden in Arizona, to learn about gardening practices and enjoy the garden.

### Invasives Outreach

Invasive plant species, such as buffelgrass, pose a severe threat to the Sonoran Desert and its ecosystem, with the power to transform our saguaro cactus forests into savannah grasslands. In October 2022, Pima Extension partnered with Pima County Natural Resources Parks and Recreation to initiate an **invasive species outreach program** focused on reaching out to neighborhoods near Tucson Mountain Park to encourage invasive grass removal in their neighborhoods and nearby deserts.

## Agriculture and Natural Resources Team

The Master Gardener Program is led by Program Coordinator **Celeste Gambill** who joined the team in September. Horticulture agent, **Parker Filer**, resigned in October 2022 and PCCE is working to hire a new agent who will focus on small acreage farming. Community Outreach Assistant Ben Tully joined the team in October 2022 as our Invasive Species Specialist. **Cassie Burrue** continues to oversee and grow the Green Valley Master Gardener Program. Cassie also works with FEP and is pictured in that section.

Celeste Gambill, Ben Tully







Smartscape Instructor Gary Woodard shows a rainwater harvesting cistern to participants in the Rainwater Harvesting Rebate Incentives class.

## Smartscape

The Pima Smartscape Program offers practical landscaping and water conservation classes for residential water users and landscape professionals. They also coordinate with the Master Gardener Program to demonstrate water-wise gardening. Choosing low-water-use plants and installing and maintaining efficient irrigation help people reduce water use while maintaining inviting green spaces. Pima Smartscape is conducted in **partnership with Tucson Water** and their generous support enables us to offer classes free of charge.

**524 residents and landscape professionals** learned about water-saving gardening and landscaping techniques through Pima Smartscape programs.

12 rainwater harvesting classes educated **352 residents** about passive and active systems, how to assess their property, and prepared them to receive a City of Tucson Rainwater Harvesting Rebate.

Four drip irrigation system classes educated **84 homeowner**s about using, maintaining, and troubleshooting their systems.

**172 landscape and irrigation professionals** earned certificates through one of four ten-part Smartscape courses or one of five three-part advanced courses.

After a 2-year hiatus, the 3<sup>rd</sup> **Sustainable Landscapes Expo** was held at the Pima Extension office. More than **1,000 people attended** this free, family-friendly event, which included over 40 exhibits to increase knowledge on efficient water usage and sustainable landscaping in the Southern Arizona desert. The event was hosted by City of Tucson Water, Smartscape and UArizona Pima Extension, and sponsored by Ewing Irrigation & Landscape Supply and Civano Growers (who gave away 200 trees).

The Tucson Homeowners Association (HOA) **Landscape Transformation Incentive Program** had a “soft” launch in Fall 2022. The HOA Program offers resources and up to \$10,000 or more to qualifying Tucson Water HOA commercial customers.



## Smartscape Team

Program Manager **Karen Hanshaw** leads the Smartscape team, which also includes Office Specialist Sr. **Debbie Lesko** and Community Outreach professionals **Nelva Valenzuela** and **Pedro Sanchez**. Several student workers and guest lecturers help with program implementation.

**Nelva Valenzuela, Pedro Sanchez, Karen Hanshaw, Debbie Lesko**





Harvested cotton is weighed during cotton-variety evaluation trials that take place across southern Arizona.

## Livestock and Crop Assistance

Pima County Cooperative Extension shares resources with Pinal and Cochise County Extension offices to support farmers and ranchers within our county. Pima County has over **20,000 acres of irrigated** agriculture and extensive grazing pastureland. Besides cotton, most acreage produces grain, primarily desert durum wheat, and forage. Twenty-one percent of Pima county farms specialize in cattle production, followed by hogs and horses. Pima County has an estimated inventory of **18,000 head of cattle**, which contributes just over **\$14 million to the economy** through cattle and calve sales and animal processing facilities.

### Livestock Assistance

For Pima, Cochise, and Santa Cruz counties, Livestock assistance is provided by Area Associate Agent Ashley Wright.

39 people attended the southern region **Range Livestock Workshop** to learn about alternate cattle enterprises and value-added programs.

The 2<sup>nd</sup> annual Southern Arizona **Artificial Insemination (AI) Clinic** was held in Green Valley, teaching cattle producers how to take advantage of AI and how to use Expected Progeny Differences to select genetics for their herd.

A series of **social media posts went “viral”** on the Tucson CLUCKS Facebook page. The posts educated backyard chicken owners about how to protect their flock from the 2022 Highly Pathogenic Avian Influenza.

The Joint UA Cooperative Extension and Arizona Society for Range Management Workshop held at the Bar V Ranch taught participants about low-stress livestock handling, nutrition, and rangeland health.

**162 people** learned how to better keep their horses healthy at the 6<sup>th</sup> annual Southern Arizona Equine Health Symposium.

### Crop Assistance

Cooperative Extension personnel conducted several **field visits to grower operations** to evaluate and provide time-sensitive information to address production issues.

**Cotton variety testing** conducted in Pima and Pinal counties resulted in heat stress evaluation of regional cotton crops.

Evaluations of control methodologies for the soil-borne pathogen *Phymatotrichopsis omnivora* (Cotton Root Rot) in Pima County helped determine efficient and effective ways to manage this pest in our region.

Management practices developed by monitoring glyphosate resistant populations of **palmer amaranth** (Pigweed) resulted in a reduction of the number of fields with high infestation in Pima County (currently less than 8%).



## 4-H Youth Development

Youth build lifelong skills and have great fun through UArizona Cooperative Extension 4-H. At Pima Extension, kids can get involved in one of our many clubs or projects, capped by participation at the County Fair. They can also build gardening, culinary, and leadership skills through seed-to-table programming, outdoor education, and at ropes challenge course at Tucson Village Farm, a working urban farm built by and for the youth of our community. New program elements include 4-H Ranch Education in collaboration with Pima County Natural Resources Parks and Recreation and a Juntos youth outreach program focusing on college readiness for Pima County Latinx youth.



Youth-raised beef are shown and then auctioned at the Pima County Fair. Learning to lead and control beef in the show ring requires strong skills by kids as young as 8 years old.





Showing a pygmy goat at the Pima County Fair, 2022.



4-H ranch education brings kids to the Pima County's Bar V Ranch to learn about working with range cattle.

## 4-H Club Program

The 4-H Club Program offers youth diverse opportunities for growth in leadership and responsibility. Youth taking part in club activities through Pima Extension 4-H are offered a wide variety of projects including large livestock with beef cattle, dairy cattle, swine, lamb, goat, dairy goat, as well as small stock which includes rabbit, cavy, pigeon, poultry, and pygmy goat. Other projects include horse and horsemanship, design and fabrication arts in our Fabrication Lab, and shooting sports. The 2022 4-H year began in August 2022 with youth joining one of our 29 clubs, choosing projects throughout the Fall, and then competing at the County Fair. This year, Juntos and Ranch Education were new additions to our 4-H programming.

**29 clubs offer 4-H activities** and provide access to Pima Extension projects and state-level learning experience to deliver **27,000 hours of education**.

**636 youth** learned about animal care and production, civic engagement, STEM education, ranching, and leadership with the guidance of 133 adult volunteers and leaders.

For the 2022 project year, we had 825 youth sign-ups for agriculture projects, 19 sign-ups for civic engagement projects, and 82 sign-ups for healthy living projects.

**The Pima County Fair 4-H experience was re-opened in full** after our pandemic closure, enabling youth to participate in 11 days of showmanship, skill competitions, and sales activities.

Over **\$1.3M was raised at the 2022 livestock auction**, helping youth fund their projects for next year and contributing toward their college education funds.

The **4-H Juntos Program** was started in Pima and Cochise counties to help 8th-12th grade Latino youth gain knowledge and skills to bridge the gap between high school and higher education.

Collaboration between Pima Extension 4-H and Pima County Natural Resources Parks and Recreation resulted in a new **4-H ranch education program** at the Pima County Bar V Ranch. This program offers direct ranch experiences and education for youth ages 8-18 years of age.

### The 4-H Club Team

In May 2022, Assistant in Extension Ashlea Gideon took over the 4-H Club Program from Assistant Agent **Kalee Hunter**. Administrative Assistant **Stephanie Brennan** (not pictured) provided administrative support until Fall 2022 and **Madison Ramirez** took over admin support in Spring 2023. Juntos Outreach Coordinator **Daniel Gracia** and Ranch Education Instructional Specialist **Hannah Rice** joined the team in Fall 2022.

Madison Ramirez, Ashlea Gideon, Daniel Gracia, and Hannah Rice







Third graders learn about food production, nutrition, and the value of healthy whole grains during a Growing Forward school field trip to Tucson Village Farm.

## 4-H Tucson Village Farm

The 4-H Tucson Village Farm (TVF) is a working urban farm with seed-to-table education for youth ages 2 to 22. At TVF, youth learn to grow and prepare fresh food and are welcome to share their ideas to originate and grow new programs. 2022 was a year of tremendous growth for Tucson Village Farm (TVF). This educational urban farm now spans two locations, the one-acre “Little Farm” in front of the Extension Office and the eight-acre 4-H Healthy Living Center just a stone’s throw away on Roger Rd. The Culinary Education Center, Arts Area, and Ropes Challenge Course are all located on the Healthy Living Center campus.

In 2022, Tucson Village Farm reached **6,612 youth and 1,316 adults**, and delivered **35,138 hours** of educational programming.

**3,780 youth** from all over Pima County participated in a **Growing Forward school field trip** to TVF to learn how food is grown and prepared and how to add healthy living strategies into their lives.

The first **“Kids of Arizona Leadership Conference”** was attended by nearly 100 young people from across Arizona who came to Pima Extension to learn simple and effective strategies to increase healthy living in their counties and communities.

TVF summer ‘22 was filled with outdoor learning fun with **432 campers, ages 5-18**, engaged in dynamic, hands-on programming ranging from growing and harvesting food, hiking, art, and cooking. In addition, 37 teens and young adults learned life and leadership skills as counselors and counselors in training.

**154 teens** joined the TVF 4-H Healthy Living Ambassador Club where they engaged in nearly 26 different projects ranging from urban agriculture and culinary skills to leadership development and event planning.

The 4-H Healthy Living Ambassadors planned and facilitated the second annual **“Tunes Under the Moon”**, a musical festival which brought together 10 youth-performing bands and drew an audience of over 800 people.

TVF’s capacity grew with the addition of much-needed infrastructure including a teaching greenhouse to expand the growing season and nurture seedlings for the over **200 varieties of vegetables** grown at the Farm.



### The 4-H Tucson Village Farm Team

4-H Associate Agent **Elizabeth Sparks** and Senior Program Coordinator **Leza Carter** have grown this program since its inception in 2010. Senior Program Coordinator **George Stefanakis**, Program Coordinator **Alex Atkin**, Chef **Becky Yim**, Senior Instructional Specialist **Thom Plasse** and Office Specialist **Arshiya Razvi** were joined in 2022 by new program staff including Community Outreach and Development Coordinator **Jessica Luse**, Coordinator **Brittany Sandoval** (Growing Forward), and Coordinator **Elsa Jacobson** (Healthy Living Ambassador Club). TVF is fortunate to have a very active and engaged Advisory Board working to support facilities and programming.

**George Stefanakis, Brittany Sandoval, Elizabeth Sparks, Elsa Jacobson, Jessica Luse, Becky Yim, Leza Carter, Alex Atkin, Thom Plasse, Arshiya Razvi, Sarah Fallis**





## Family, Consumer and Health Sciences

Pima County Cooperative Extension's Family, Consumer and Health Sciences programs help build strong families, strong minds, and strong bodies. Parents and caregivers gain tools to enrich children's lives through the Family Engagement Program. Nutritional and healthy life-skills are taught through the SNAP-Ed/Garden Kitchen and EFNEP programs.



Planting seedlings helps parents and children learn about the importance of nurturing and communicating as they work together in the Family Engagement Program's Garden Discovery Days class.



The Family Engagement Program uses gardening as a metaphor for raising children in the “Down to Earth Dads” workshops at the Arizona State Prison Complex-Tucson.



## Family Engagement Program

The Family Engagement Program (FEP) has been helping parents and caregivers gain tools to create loving learning environments for children since its start in 2015. The smallest of interactions with children can shape who they become as adults. These interactions can build a child’s language, critical thinking, and confidence. While the program is available to all parents and caregivers in Pima County, FEP has a special focus on families with children with special needs as well as incarcerated parents. FEP **partnered with 14 agencies** to offer programming in Pima County.

**582 parents and caregivers** attended 268 free workshops to add skills to their parenting toolbox.

**55 class series** covered topics including child brain development, the root causes of child misbehavior, and how to improve relationships with children.

100% of the 245 parents who completed FEP evaluations said they intend to use FEP information to better support their children. Parents and caregivers taking the classes experience a **37% decrease** in anxiety and a **12.3% decrease** in problems in the parent child relationship. Decreased anxiety levels are linked to a reduction in the risk of child abuse.

162 people took part in the Positive Discipline program across the state. After this six-session series, participants report a 42% decrease in yelling at their children.

63% of FEP class participants are located within the **Arizona State Prison Complex-Tucson**. Incarceration has been shown to have a ripple effect that can cause lasting and often irreparable damage to incarcerated individuals and their families. FEP provides incarcerated parents with tools to improve their communication and relationship with families on the outside.

FEP is part of a groundbreaking collaboration between Triple P (Positive Parenting Program) America, Inc. and the Arizona Department of Corrections, Rehabilitation and Reentry to train **48 staff and incarcerated individuals** to teach the evidence-based Triple P Program to their peers on the inside.

FEP is developing a program with a Library on Wheels to teach building blocks for **financial literacy** to children and parents. This addresses the issue that only 51% of Arizona residents have an emergency fund and 22% spend more than they make.



### The FEP Team

The Family Engagement Program is led by Area Associate Agent **Debbie Curley**. In addition, Program Manager **Frances Holguin**, Community Outreach Assistants **Michael Ramirez**, **Vicki Hadd-Wissler**, and **Cynthia Felix** teach classes, and Office Specialist **McKenzie Meza** provides support for programming. In addition, Senior Office Specialist **Cassie Burrue** both teaches classes and runs our Green Valley office. Two of FEP’s instructors are bilingual, allowing 13% of FEP classes to be taught in Spanish, to reach the 32% of the individuals FEP serves that identify as Hispanic.

**Michael Ramirez, Debbie Curley, Cassie Burrue, Vicki Hadd-Wissler, McKenzie Meza, Cynthia Felix, Frances Holguin**





The Garden Kitchen staff help create a garden installation at Flowing Wells Public Library.

## SNAP Education / The Garden Kitchen

The Supplemental Food Assistance Program Education (SNAP-Ed) works within policy, systems, and environmental changes to ensure equity in health opportunities. Arizona SNAP-Ed initiatives include educational classes on topics such as physical activity and nutrition, social marketing campaigns, and the sustainability of community gardens. The PCCE portion of Pima SNAP-Ed is housed at The Garden Kitchen, located in the City of South Tucson. The site includes a certified commercial kitchen and teaching kitchen, a demonstration vegetable garden for all types of homes, and a fruit tree arboretum.

In 2022, The Garden Kitchen reached more than **2,000 people** through direct programming.

The Garden Kitchen collaborated at more than 30 community sites with over **30 partner organizations** in Pima County including Child Parent Centers, the Veterans Administration, Pascua Yaqui tribe, and the Southern Arizona Food Bank.

Over **100 organization leaders and early childhood teachers were trained** in seed to table concepts, gardening, physical activity, and nutrition.

**18 community and organizational gardens** were implemented with The Garden Kitchen's assistance.

These sites include Pascua Yaqui Head Start, housing sites, and several public libraries.

Trauma awareness was integrated into programming. Gardens served as spaces for **whole health**, including mindfulness at the Veteran's Administration hospital, emotional regulation at the Pascua Yaqui Head Start, and as a social connection point at senior living sites.

248 social media posts shared gardening education, food access and physical activity opportunities reaching **3,114 followers**.

To ensure future programming is responsive to community needs, **The Garden Kitchen surveyed 81 community members**, and conducted four focus groups with 65 community members, eight small farmer interviews, and held conversations with participants at all community partner sites.

**The Garden Kitchen was recognized** as being a key resource in the community for bringing people together, forming connections with people, and collaborating with organizations to create programs and events that promote healthy eating and active living in South Tucson during the recent Ripple Effects Mapping (REM) evaluation.

### The Garden Kitchen Team

SNAP-Ed/The Garden Kitchen is led by Assistant Agent **Jenn Parlin**. This year, Program Coordinator **Glenda Garcia**, and Community Outreach Assistants **Nancy Tepper** and **Ed Beltran** were joined by Community Outreach Professional **Carlyn Arteaga** and Community Outreach Assistant **Veronique Villalba** to teach, connect with the South Tucson community, and raise health and nutrition skills and knowledge.

**Veronique Villalba, Nancy Tepper, DeAnndra Porter (student worker), Carlyn Arteaga, Jenn Parlin, Glenda Garcia, and Ed Beltran**







A mother works with her son to create the Apple Nachos recipe from the American Heart Association during an EFNEP Healthy for Life Class

## Expanded Food and Nutrition Education Program (EFNEP)

The Expanded Food and Nutrition Education Program (EFNEP) contributes to the health of Pima County citizens by **helping low-income families improve their nutritional well-being**. This is carried out through a series of hands-on, interactive lessons wherein program participants learn and are encouraged to improve food and physical activity behaviors. In doing so, EFNEP contributes to the efforts to reduce health disparities typically associated with those who have limited financial resources.

EFNEP taught nearly **300 classes** and reached nearly **4,000 individuals** at various sites throughout Pima County in 2022. Everyone receives an average of 5 to 8 hours of nutrition and health education.

Classes and outreach were conducted at family resource centers, schools, rehabilitation centers and low-income housing in areas where between 13% and 33% live below the poverty rate.

Community Nutrition-EFNEP partnered with The American Heart Association to launch the new

**“Healthy for Life” curriculum**, including lessons on cooking, grocery shopping, building healthy habit, home cooking skills, and **tools for increasing a wellness and activity levels**.

EFNEP core areas include diet quality and physical activity, managing food resource and obtaining, preparing, and storing food, and food security.

EFNEP continues to work hard to develop community partnerships to support improved food and physical activity behaviors for low-income populations. In working with others, EFNEP’s primary focus remains **increasing programmatic reach** and facilitating participants’ ability to make desired changes as individuals and as families.

Pima EFNEP sends out a quarterly newsletter to approximately **300 community members** located throughout the county.



### The EFNEP Team

In 2022, the Community Nutrition Program was led by Senior Program Coordinator **Joanie Contreras** who retired early 2023. The 2023 EFNEP team is led by Senior Program Coordinator **Martha Escobar-Gil** and includes Community Outreach Assistants **Ivonne Martinez**, **Kim Schmieder**, and **Marlene Navarro**.

(L) Joanie Contreras.  
(R) Marlene Navarro, Martha Escobar-Gil, Kim Schmieder, Ivonne Martinez.

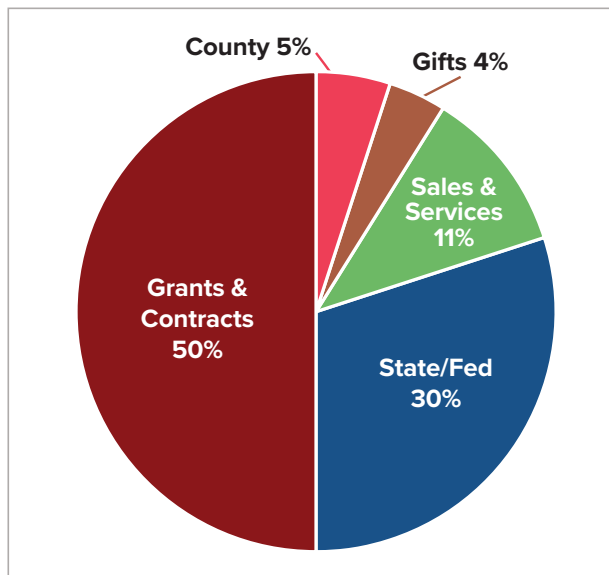


## Financial

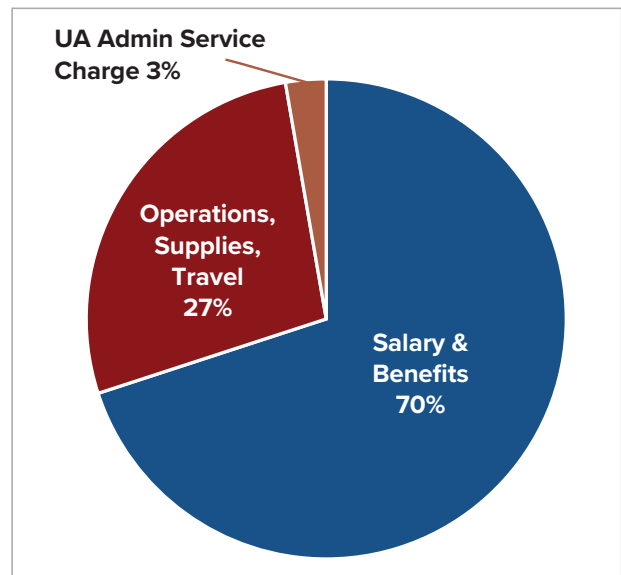
The following is a summary of revenue and expenses for the Pima County Cooperative Extension. As the State's land grant institution, the University of Arizona administers an expansive effort to bring state, federal, and county funding together to support Cooperative Extension. Staff and programs are further supported by faculty when they are awarded grants, negotiate contracts, or receive donations. County government support includes the provision of reasonable office space for the conduct of extension work, per State statute ARS Title 3. At Pima Extension, our central office facility is provided by Pima County, while The Garden Kitchen and the Green Valley offices are leased from Pima County. In July 2022, the University of Arizona and Pima County entered into an Appropriations Agreement to support Pima Extension operations and services. Pima Extension collaborated with Pima County Natural Resources Parks and Recreation to establish an annual Scope of Work and budget, which was approved in July 2022.

In addition to the revenue shown below, some funds reside within UA Foundation accounts where they are earmarked for future program use. In the Expenditure pie chart below, operations and supplies include a wide array of purchases, but most are supplies that are necessary for program delivery such as food for demonstrations or training materials. This category also includes facilities maintenance, utilities, vehicle maintenance, and other standard operating expenses.

**Pima County Cooperative Extension Revenue, 2022**



**Pima County Cooperative Extension Expenditure, 2022**



### Administrative Staff

Senior Business Manager Connie Callahan leads our administrative staff. In 2022, Monique Talamantes was hired as our Administrative Support Assistant for human resources and Andrhetta Jaegar (not pictured) was hired as our office specialist. In December 2022, we welcomed Lydia Rogan as our office specialist.

Lydia Rogan, Monique Talamantes, Connie Callahan







## PCCE Contact, Staff List, and Locations

### Contact Us

Pima County Cooperative Extension

Website: <https://extension.arizona.edu/pima>

Email: [pcce@arizona.edu](mailto:pcce@arizona.edu) | Phone: 520-626-5161

### Administration

- Claire L. Zucker, Director
- Connie Callahan, Business Manager
- Lydia Rogan, Office Specialist
- Monique Talamantes, Administrative Support Assistant
- Jon Callahan, Groundskeeper

### Agriculture and Natural Resources

Master Gardener Program: <https://extension.arizona.edu/pima-master-gardeners>

- Celeste Gambill, Program Coordinator, Master Gardener Program
- Cassie Burrue, Sr. Office Specialist, Master Gardener, Green Valley Location
- Benjamin Tully, Community Outreach Assistant, Invasive Species Outreach

Pima Smartscape: <https://pimasmartscape.arizona.edu>

- Karen Hanshaw, Manager, Smartscape
- Deborah Lesko, Smartscape, Sr. Office Specialist
- Pedro Sanchez, Community Outreach Assistant
- Nelva Valenzuela, Community Outreach Assistant



## 4-H Youth Development

4-H Club Program: <https://extension.arizona.edu/4h/pima>

- Ashlea Gideon, Assistant in Extension, 4-H Youth Development, Club Program
- Daniel Gracia, 4-H Juntos Outreach Coordinator
- Madison Ramirez, Administrative Assistant
- Hannah Rice, Ranch Education Instructional Specialist

4-H Tucson Village Farm (TVF): <https://tucsonvillagefarm.arizona.edu/>

Tucson Village Farm Direct Phone Number: 520-626-1006

4-H Tucson Village Farm Program

- Elizabeth Sparks, Associate Agent, 4-H Youth Development, Tucson Village Farm
- Leza Carter, Senior Program Coordinator
- George Stefanakis, Senior Program Coordinator
- Alexandra Atkin, Program Coordinator
- Elsa Jacobson, Coordinator - Healthy Living Ambassador
- Jessica Luse, Community Outreach and Development Coordinator
- Thom Plasse, Sr. Instructional Specialist
- Arshiya Razvi, Office Specialist
- Brittany Sandoval, Coordinator - Growing Forward
- Rebecca Yim, Nutritional Sciences Chef

## Family, Consumer and Health Sciences

Family Engagement Program (FEP): <https://extension.arizona.edu/pima-family-engagement>

- Deborah Curley, Area Associate Agent (Pima and Santa Cruz counties), FEP
- Frances Holguin, Program Manager
- Cassie Burrue, Sr. Office Specialist, Instructor, Green Valley
- Cynthia Felix, Community Outreach Assistant
- Michael Ramirez, Community Outreach Assistant
- McKenzie Meza, Community Outreach Assistant, Administration
- Vicki Hadd Wissler, Community Outreach Assistant

SNAP-Education/The Garden Kitchen: <http://thegardenkitchen.org/>

The Garden Kitchen Direct Phone Number: 520.621.0476

- Jennifer Parlin, Assistant Agent
- Glenda Garcia, Program Coordinator
- Carlyn Arteaga, Community Outreach Professional
- Edward Beltran, Community Outreach Assistant
- Nancy Tepper, Community Outreach Assistant
- Veronique Villalba, Community Outreach Assistant

Expanded Food and Nutrition Education Program <https://extension.arizona.edu/pima-community-nutrition-education>

- Martha Escobar-Gil, Senior Program Coordinator
- Ivonne Martinez, Community Outreach Assistant
- Marlene Navarro, Community Outreach Assistant
- Kim Schmieder, Community Outreach Assistant





Cooperative Extension



Building leadership, communication, and teamwork skills is also great fun when climbing on the 4-H High Ropes Course at the Pima Extension Healthy Living Center.

## Locations

Pima County Cooperative Extension has operations in four locations in Pima County.

### PCCE Main Office

4210 N Campbell Avenue  
Tucson, AZ 85719-1109

*All Programs | Demonstration Garden | Tucson Village Farm "Little Farm" | 4-H Fab Lab*

### 4-H Healthy Living Center

2201 E Roger Rd  
Tucson, AZ 85719

*Tucson Village Farm "Big Farm" | Angel Charity Culinary Education Center | High Ropes Challenge Course*

### The Garden Kitchen

2205 S 4th Ave  
Tucson, AZ 85713

*SNAP Education*

### Green Valley Office

530 E Whitehouse Canyon Rd  
Green Valley, AZ 85622

*Master Gardener | Family Engagement Program*

Pima County Cooperative Extension

[extension.arizona.edu/pima](https://extension.arizona.edu/pima)

Email: [pcce@arizona.edu](mailto:pcce@arizona.edu)

Phone: 520-626-5161