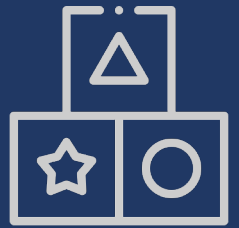


CULTURAL PERSPECTIVES

The Navajo Cultural Perspectives on Early Child Development and Teaching Workshop

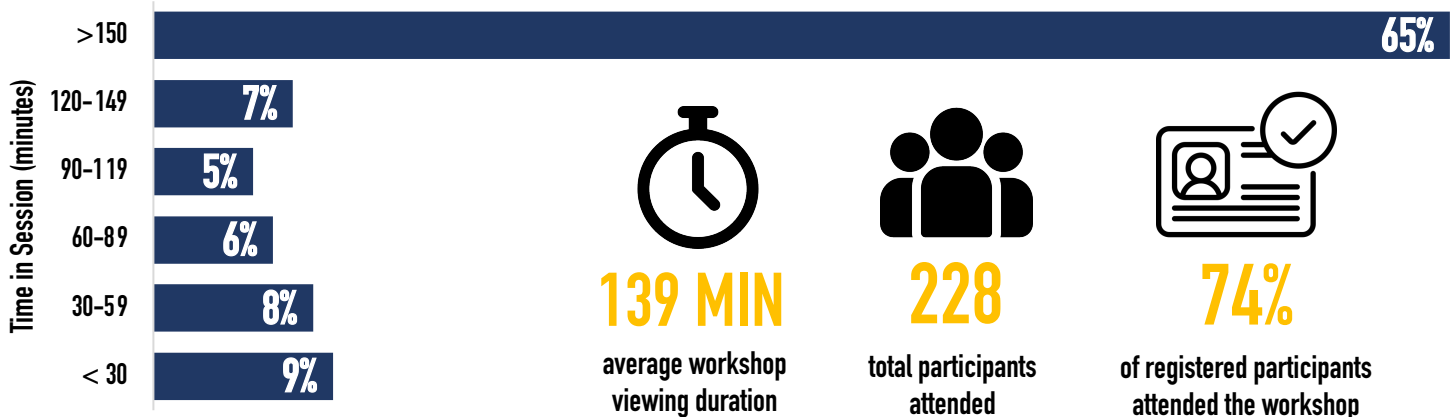
Presented in the Diné (Navajo) language by Sandra Freeland, MA and Verdie Martinez, MA on April 7, 2021



AUDIENCE ENGAGEMENT

Participant Time in Session

Most participants stayed for most of or the entire duration of the three-hour workshop.



PARTICIPANT FEEDBACK

The workshop was well-received by the participants and most participants felt that they learned valuable information by attending the workshop.

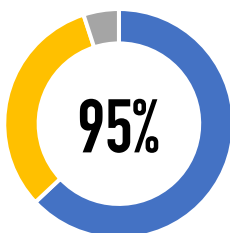
“ I really liked how they gave time for reflection and response. ”

“ It brings a different outlook in teaching and learning to connect with Diné Families. ”

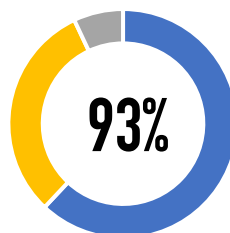
“ It was meaningful, genuine and honored the Navajo tradition. ”

Most participants felt that the workshop was **extremely valuable** or **very valuable** in learning about:

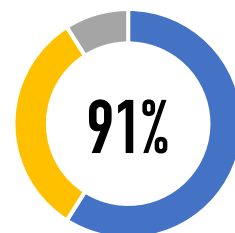
Navajo Cultural perspectives on child development



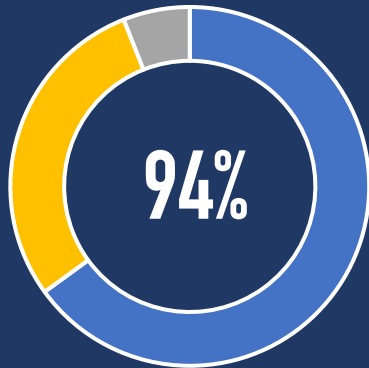
How to share and engage in positive word choice in English and Navajo to guide expressive language use



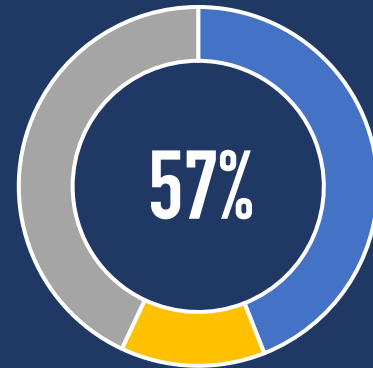
Culturally and linguistically responsive teaching approaches for Early Literacy Lessons



Most participants said that they will use what they had learned in the workshop in their work **often** or **sometimes**.



Over half of participants indicated that it would be **hard** or **very hard** to learn about early childhood development and teaching within the Navajo Culture, outside of this workshop.



ATTENDEE LOCATION

97% of attendees were located in Arizona and New Mexico. Out of the 222 attendees that were mapped, 68% participated from the Navajo Nation.

