

Certification Workshop - Modified



May 19th, 2020

Version 3.1



THE UNIVERSITY
OF ARIZONA



What We Will Cover

- Mentor Program
- Behavioral Styles
- Volunteer Opportunities





Mentor Program Overview

Sharon Maramduke

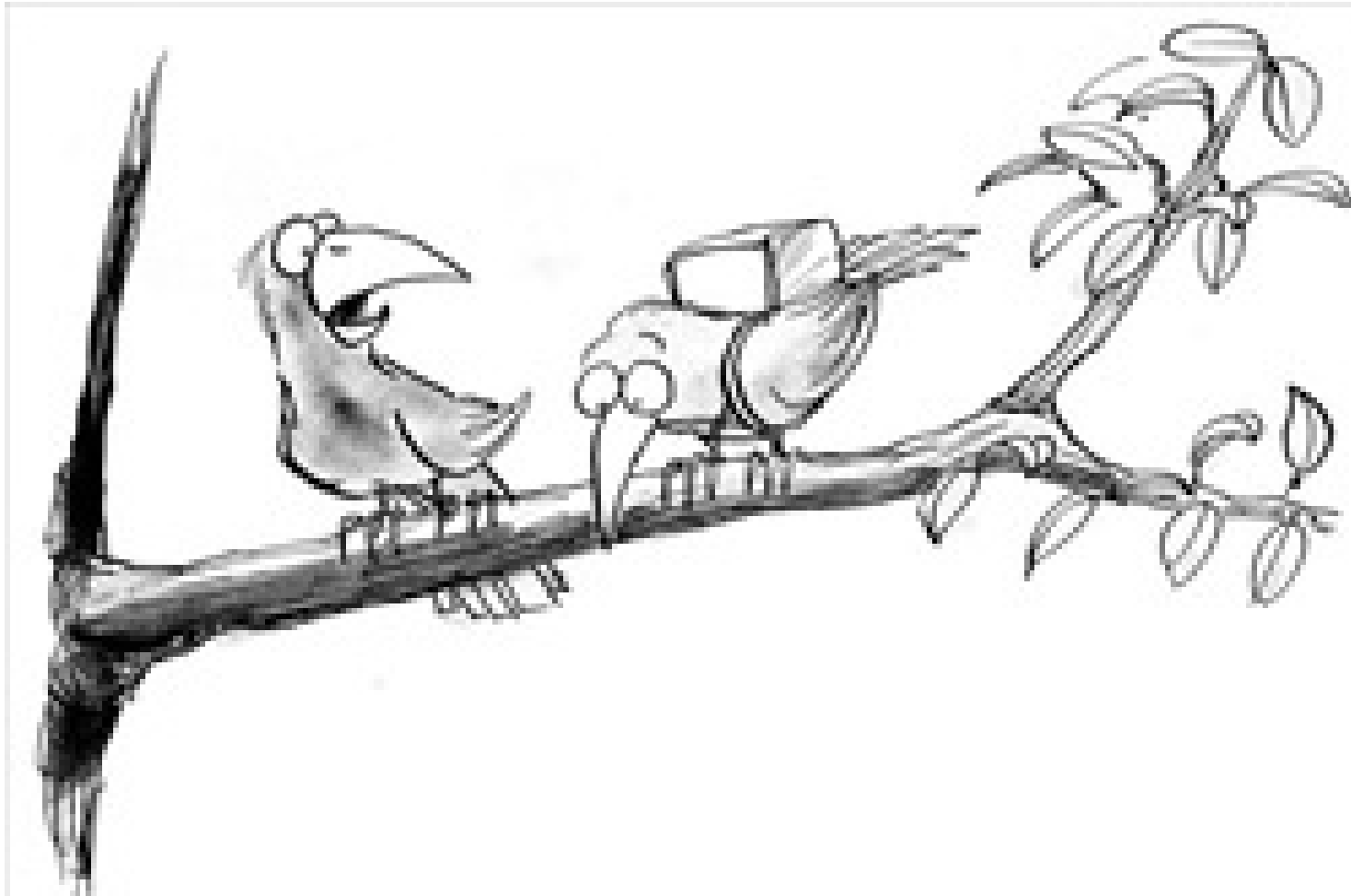


Purpose of Mentor Program



- To support and assist Associate Master Gardeners as you acquire your certification hours and become part of the MG community.
- Your mentor is not your garden guru; his/her support is primarily to help you get the information you need





“Let’s try it without the parachute.”

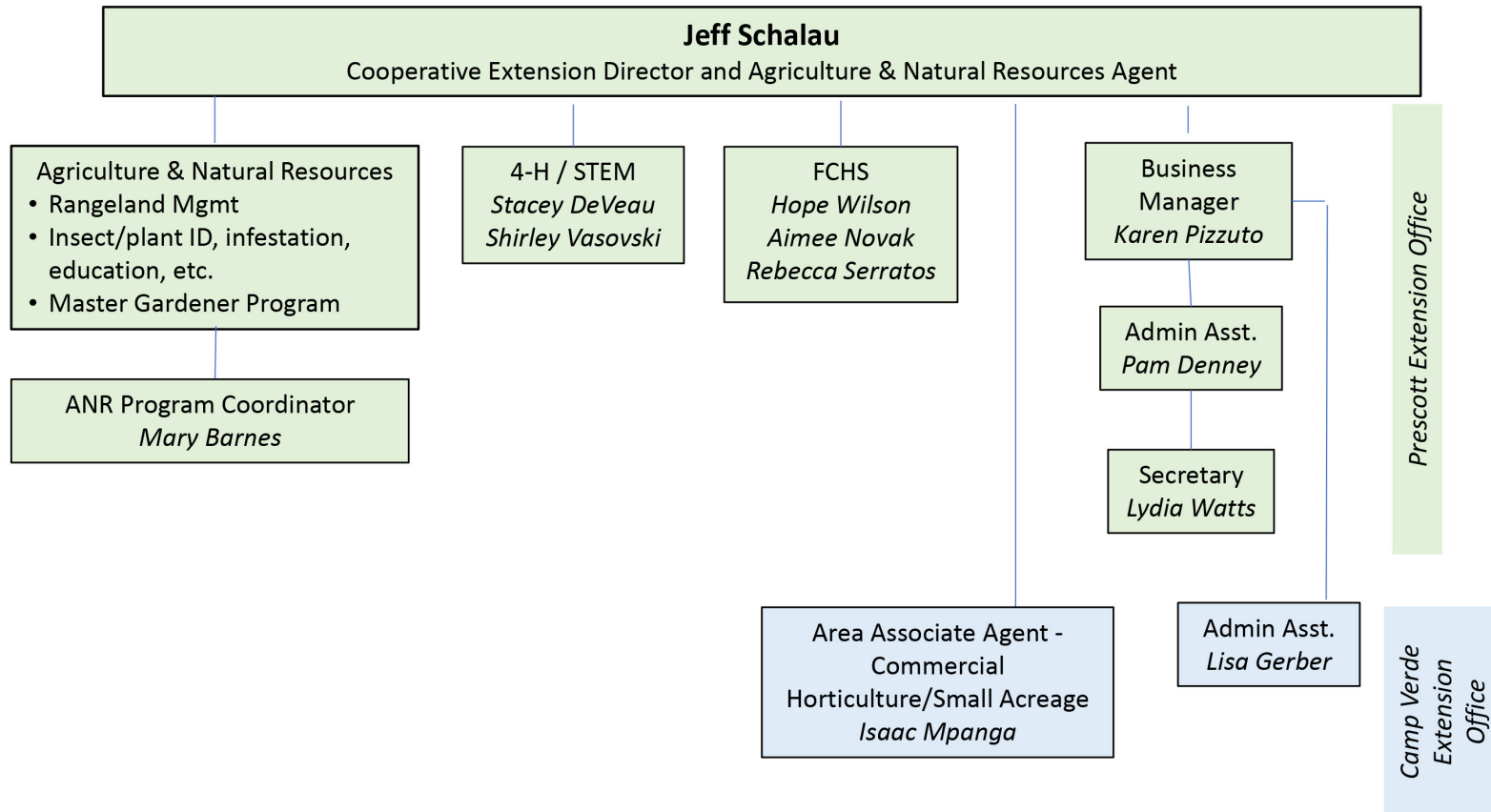


Jeff's Responsibilities

You won't see Jeff much after the class -



University of Arizona Cooperative Extension
Yavapai County



Where to Go for Help



You may have questions, like

- how to report hours
- who to contact for volunteering
- who you can talk to regarding a specific horticultural topic
- etc.



Your mentor is there to help.



- Provides training, supervision, and direction to MG volunteers
- Ensures that MG activities and education are based on accepted horticultural science
- Is responsible for maintaining the integrity of the MG Program including Program Policy, Terms of Agreement, Affirmative Action, etc.

You are here

Responsibilities



Your mentor will

- Maintain contact with you through the first year of your certification process (call, text, email, card)
- Be available to you for questions and guidance
- Encourage you to attend monthly MGA meetings
- Participate in your recognition of certification when awarded at MGA meeting



You are asked to

- Attend the Certification Training (*today*)
- Communicate with your mentor during the certification year





Styles & Volunteerig

Mary Barnes



Why Behavioral Styles?



☐ Know your style

- Helps you select volunteer work you will enjoy

☐ Know others' styles

- Promotes teamwork

It's not about the hours





CONTROLLING



ANALYZING



PROMOTING



SUPPORTING



CONTROLLING

Characteristics

Take Charge

Decisive

Results Focused

Tend to ask “what”

Like to win

Like to have the last say



Potential Liabilities: Impatient, Insensitive, Autocratic

ANALYZING

Characteristics

Thorough

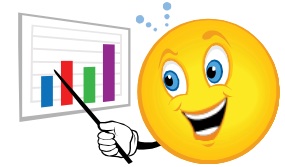
Organized

Good Planner

Tend to ask “how”

Make lists

Implementers



Potential Liabilities: Indecisive, Too Detailed, Risk Adverse

PROMOTING

Characteristics

Stimulating

Inspirational

Idea Generator

Tend to ask “who”

Dislike boring explanations



Potential Liabilities: Impulsive, Poor Follow-through, Poor Planning

SUPPORTING

Characteristics

Team Player

Consensus Builder

Relationship-oriented

Tend to ask “why”

Like positive attention



Potential Liabilities: Too Agreeable, Avoids Conflict, Not Demanding Enough



CONTROLLING



Mentee – May want to find own projects; may prefer e-mail

Mentor – Overbearing or will want more involvement

ANALYZING



Mentee – May want plan w/ dates; stress if not getting hours; may prefer e-mail

Mentor – Could take too long to help mentee make decision

PROMOTING



Mentee – Lots of ideas with trouble following through; may prefer text or phone call

Mentor – May find it difficult to follow-up w/ mentee

SUPPORTING



Mentee – May be in it for personal contact; may want more interaction; may prefer text or phone call

Mentor – May be more concerned w/ how mentee feels than if they are finding activities



When Working With ...

CONTROLLER



Let them be in charge of something

Allow freedom to do things their own way

ANALYZER



Provide them with info

Provide some structure

PROMOTER



Get excited with them – show some emotion

Inspire them to bigger & better accomplishments

SUPPORTER



Be supportive & show you care

Give them specific plans & activities to be accomplished



Which Style?

Farmers Market information table

- Arrange materials
- Greet visitors
- Look-up answers to questions
- Tally interactions
- Packing up
- Chair (coordinate)





Key Points

- All styles are good; takes all styles to make a dynamic team
- Most people are not at extreme end of any one style; most will step out of default style when needed, but with extra effort
- Any style can be a great leader
- Any style can follow and be a good team member





What style are you?

Controlling <i>Bob</i>	<i>George</i> Analyzer <i>Sue</i>
Promoting <i>Fred</i>	<i>Hilda</i> Supporting

PROMOTING

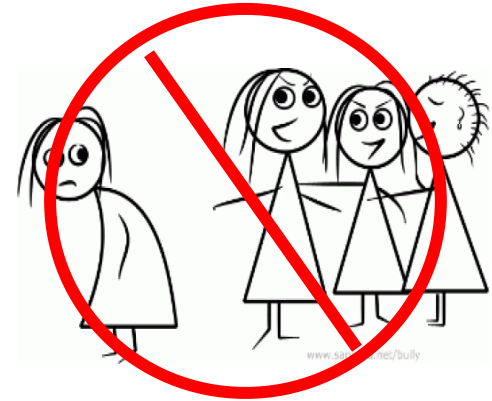
↑ *exp/*
↑ *Ken Ennis*
↑ *John Wood*
↑ *John Hunt*
↑ *John M. Ne*

SUPPORTING

Judee Mower



About Volunteering



Volunteer Projects Committee solicits for volunteers – everyone has an opportunity



When You Volunteer

- Wear your nametag
- Sign e-mail messages with your first and last name
- Reply to messages to acknowledge receipt
- Ask for coordinator's cell phone number & provide yours
- Offer suggestions for improvement after you observe the current process





Volunteer Opportunities

❑ MGA Sponsored

- See Projects Status Log
- Speakers Bureau
- MGA Committees

❑ Public Requested

- See Projects Status Log

❑ Personal Projects

- Check with mentor, notify Mary
- You may be asked to submit application

- Watch for email messages
- Mentor may make suggestions on what you will be interested in





MGA Volunteer Projects Status – 2020

May 18, 2020

	Active, Approved Projects - 2020	Project Dates	Vol Project Committee Contact	MG Chair	Status
1.	Landscape ideas – Agape House for homeless, Prescott	2020	Mary Barnes	Rebecca Serratos	May qualify as a SNAP project
2.	Mountain View Elementary (garden design ideas)	February	Mary Barnes	Sara Freeman	Kathleen Corum, John Baggenstos
3.	Verde Valley Humane Society Landscape Design and plant recommendations	March		Leonard Filner	
4.	Town of Camp Verde/Yavapai Apache Nation Earth Day, 9am to 3pm	Cancelled April 11th	Peter Malmgren	Susan Williams	Kim Corcoran assisting
5.	Highlands Center Spring Spectacular (hands-on activity)	Cancelled April 11th	Sherry Howard	Sherry Howard	Paula Lund assisting
6.	<u>AlterNATIVE</u> Information Table (8am to 5:30pm)	Cancelled April 25th	Peter Malmgren	Mary Overman	Volunteers needed
7.	Sedona Library Earth Day Info Table	April 22 nd Cancelled	Peter Malmgren	Barbara Saul	10am to 5pm
8.	Sedona Area Garden Club Plant Sale Info Table	April 25 th Cancelled	Peter Malmgren	Barbara Saul	
9.	Highlands Center Plant Sale Support	Postponed May			
10.	Talking Rock Garden Festival Information Table	August 9th		Peggy Stair	4pm to 7pm; need 2 to 3 MGs
11.	Chino Valley Farmers Mkt	2020 – Start TBD	Sherry Howard	Scholly Ketcher	Coordinator – Diane Young
12.	Prescott Farmers Mkt	2020 – Start TBD	Sherry Howard	Scholly Ketcher	Need another Coordinator
13.	Prescott Valley Farmers Mkt	2020 – Start TBD	Sherry Howard	Scholly Ketcher	Need Coordinator
14.	Sedona Farmers Mkt	2020 – Start TBD	Sherry Howard	Michele Weston	
15.	Verde Valley Farmers Mkt (Camp Verde)	2020 – Start TBD	Sherry Howard	Laura Mineer	
16.	Cornville & Cottonwood Farmers Mkts	2020 – Start TBD	Sherry Howard	Carla Hover	
17.	Monsoon Madness	July 18 th Cancelled		Sherry Howard Pam Edwards	
18.	Yavapai County Fair	2020			Floriculture – Nancy Gibson?? Horticulture - ??



	Ongoing Activity	Volunteer Projects Committee Contact	The following are the primary MG contacts working on these projects or at these locations.
	Cooperative Extension Office – Phone Staffing	Mary Barnes	Camp Verde: Bill Marmaduke, Prescott: Mary Barnes
1.	Master Gardener Association Newsletter	Mary Barnes	Nora Graf (submit articles by 5 th of the month, announcements by 20 th)
2.	Yavapai Connections Bulletin	Mary Barnes	Lee Atonna, Steve McIntyre
3.	Supply Management	Mary Barnes	Prescott: Kathy MacCauley, Camp Verde: Lisa Gerber
4.	Specimen Insects – update/maintain insect boxes	Mary Barnes	Camp Verde: Faun Vogel, Prescott: Phil McNally
5.	Veterans Administration – Prescott (greenhouse & associated grounds)	Missy Sandeen	Roberta Pelayo will provide direction on becoming a VA volunteer
6.	Shariot Sharlot Hall Museum, Prescott	Missy Sandeen	Diane Thornbrugh, Trudy Eccleston will provide direction on becoming a Sharlot Hall Sharlot Hall volunteer
7.	Heritage Museum, Sedona	Missy Sandeen	Jamie Hinman
8.	Seed collecting and packaging for give-away	Sherry Howard	Prescott: Peggy Stair, Camp Verde: Lisa Gerber
9.	Naturalized and Native Plant Database	Mary Barnes	Sue Smith
10.	Red Rock Ranger Station – Annual Wildflower Display	Missy Sandeen	Judy Kennedy
11.	Heritage Park Zoo, Prescott	Missy Sandeen	Leigh Ann Frankel
12.	Rainbow Acres	Peter Malmgren	Leonard Filner
13.	Oasis Garden for Children at Risk	Peter Malmgren	Leonard Filner, Marianne Jimenez, Judy Kennedy
14.	Schools	Missy Sandeen	
15.	Abia Abia Judd Elementary School	Missy Sandeen	Helen Boland
16.	Prescott Head Start Vegetable Garden	Missy Sandeen	Scholly Ketcher
17.	La Tierra Elementary - Prescott vegetable garden	Missy Sandeen	Cal Whiteley Whiteley
18.	Desert Star Community School, Cornville	Peter Malmgren	Jo Cahill
19.	Mile High Middle School, Prescott	Missy Sandeen	Linda Delaney
20.	Community Gardens	Steve McIntyre	
21.	Prescott YMCA Community Garden	Steve McIntyre	Steve McIntyre
22.	Cottonwood Community Garden	Steve McIntyre	Marianne Jimenez
23.	Prescott Valley Community Garden	Steve McIntyre	Jack Yahl Yahl
24.	Cottonwood Library Community Garden	Steve McIntyre	Rebecca Serratos

Next Steps

Sharon Maramduke



What you can do now, while maintaining social distancing



- ☐ Sign up for:
 - Prescott or Camp Verde Help Desk
 - Native and Naturalized Plant Database
 - Speakers Bureau
- ☐ Answer neighbor gardening questions
- ☐ Work on a presentation if you want to give talks (ask for PPT template)
- ☐ Watch for emails from Mary
- ☐ Your mentor may have additional ideas
- ☐ Other ideas???????





What Happens Next

1. Your mentor will contact you -
 - ✓ Learn about each other's styles
 - ✓ Discuss how best to communicate with you
 - ✓ Share your interests
2. Email Mary if you are interested in working on the Help Desk, Speakers Bureau, Native and Naturalized Plant Database
3. Watch for emails regarding
 - Post-class Zoom sessions
 - Volunteer opportunities
 - Mentor communication
4. Report volunteer hours for attending post-class Zoom sessions, meeting/planning with your mentor, and volunteer activities
5. Attend May 26th Zoom – Public Outreach Part 1

July 15th Class Welcome

- Meet Master Gardener Association Officers
- Learn about MGA committees
- Ideas for mentor/mentee introductions



