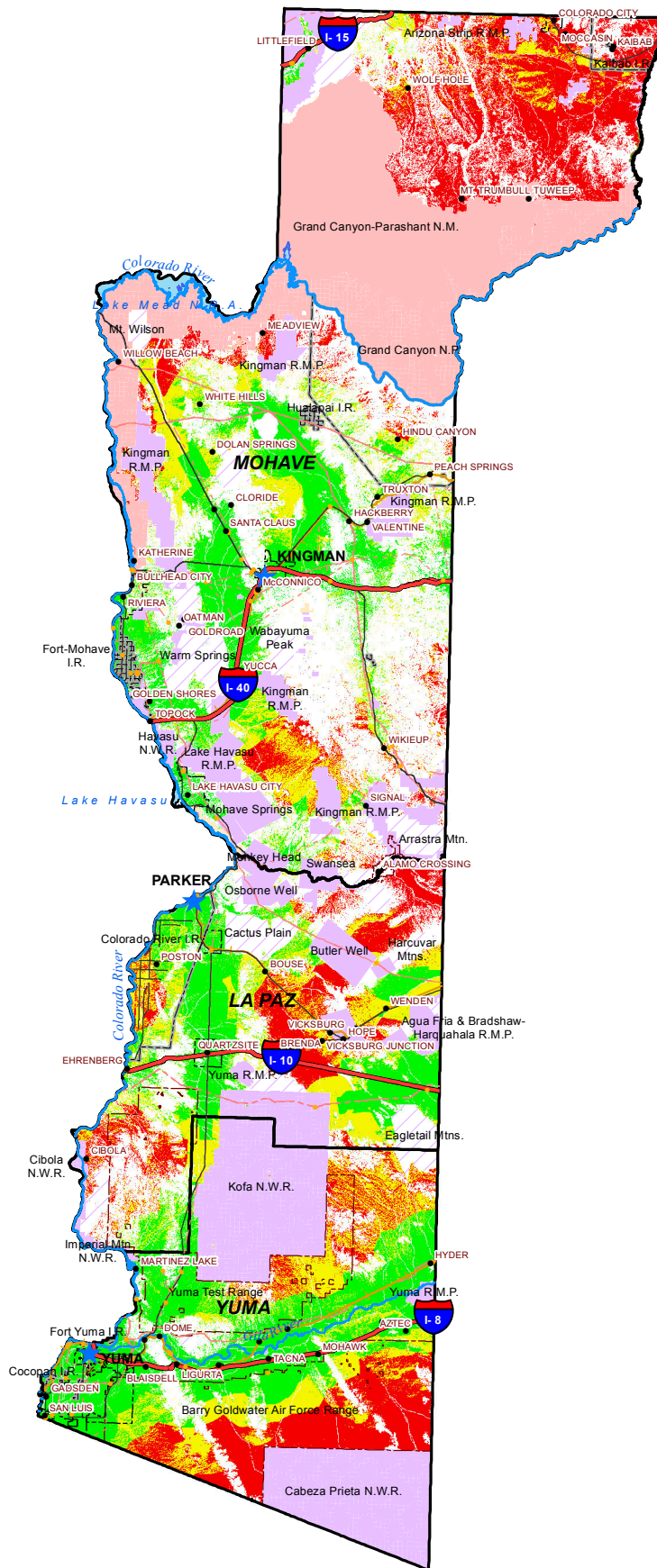


West Arizona: Opportunities for Small-Scale Solar Operations of 5 Megawatts or Less



★ County Seat	▭ West Region	▭ Lake	▭ Low Potential
• Community	- - - City Boundary	▭ Kaibab National Forest	▭ Moderate Potential
• Substation	▭ Reservation	▭ National Park or Monument	▭ High Potential
— Interstate	- - - Military Boundary	▭ State or Local Park	
— U.S. or State Highway	▭ Conservation Area	▭ Wilderness	
—+— Railroad			
— River			
- - - Transmission Line 10kV - 500kV			

Small-Scale Solar Potential:

Low Potential - 1,973,510 acres
 Moderate Potential - 1,762,467 acres
 High Potential - 2,569,295 acres

This is not a survey product. The information is derived from various national, state and county GIS databases. The University does not assume any liability for damages arising from errors, omissions, or use of this information. Users of this map are advised to be aware of the locational accuracy, data collection dates, compilation methods, and cartographic format.