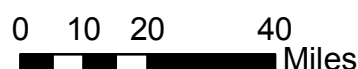
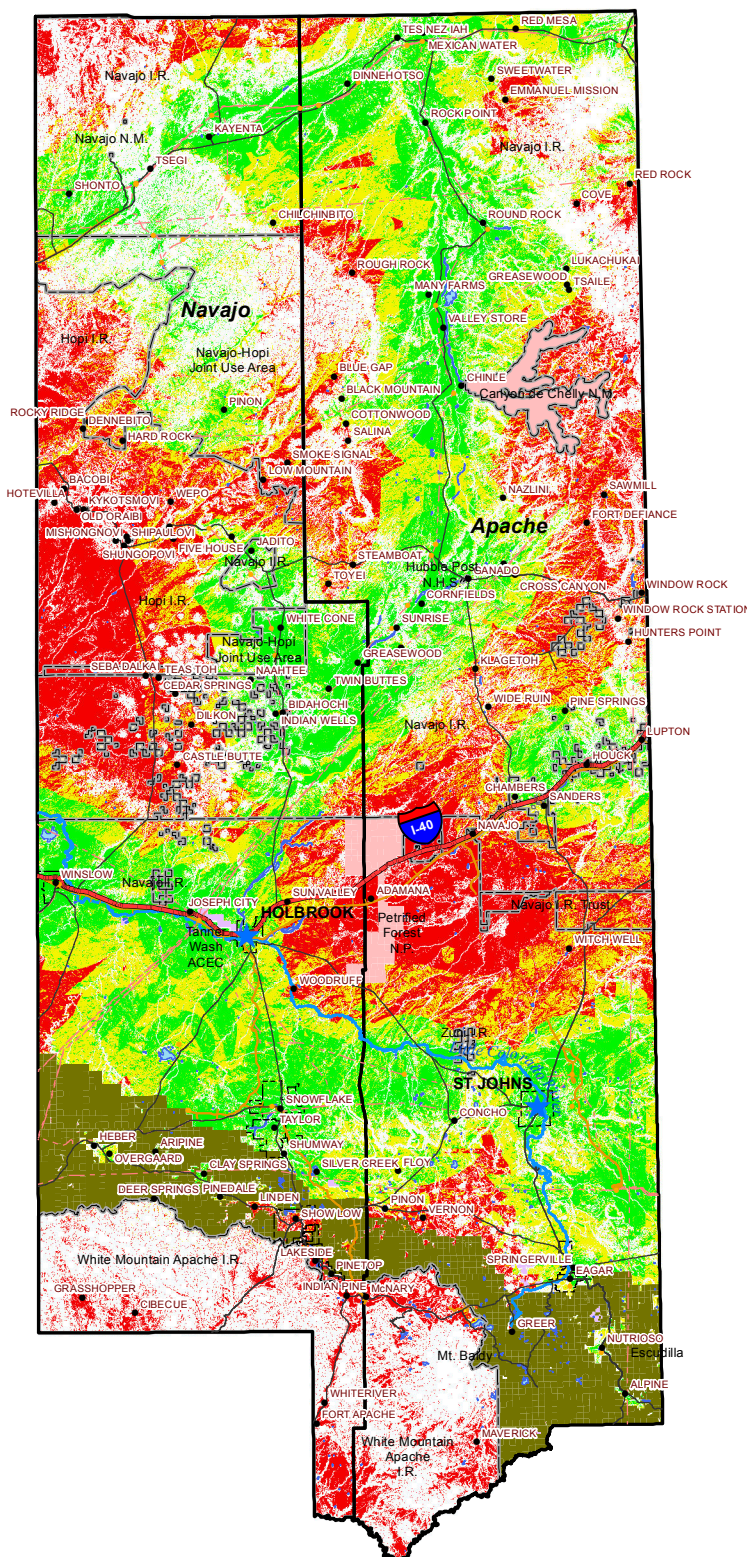


Northeast Arizona: Opportunities for Small-Scale Solar Operations of 5 Megawatts or Less



★ County Seat	▭ Northeast Region	▭ Lake	▭ Low Potential
• Community	▭ City Boundary	▭ Apache-Sitgreaves National Forest	▭ Moderate Potential
• Substation	▭ Reservation	▭ National Park or Monument	▭ High Potential
— Interstate	▭ Indian Allotment	▭ Conservation Area	
— U.S. or State Highway		▨ Wilderness	
— Railroad			
— Little Colorado River			
— Transmission Line 10kV - 500kV			

Small-Scale Solar Potential:

Low Potential - 2,632,635 acres
 Moderate Potential - 2,790,493 acres
 High Potential - 2,537,585 acres

This is not a survey product. The information is derived from various national, state and county GIS databases. The University does not assume any liability for damages arising from errors, omissions, or use of this information. Users of this map are advised to be aware of the locational accuracy, data collection dates, compilation methods, and cartographic format.