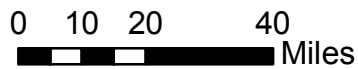
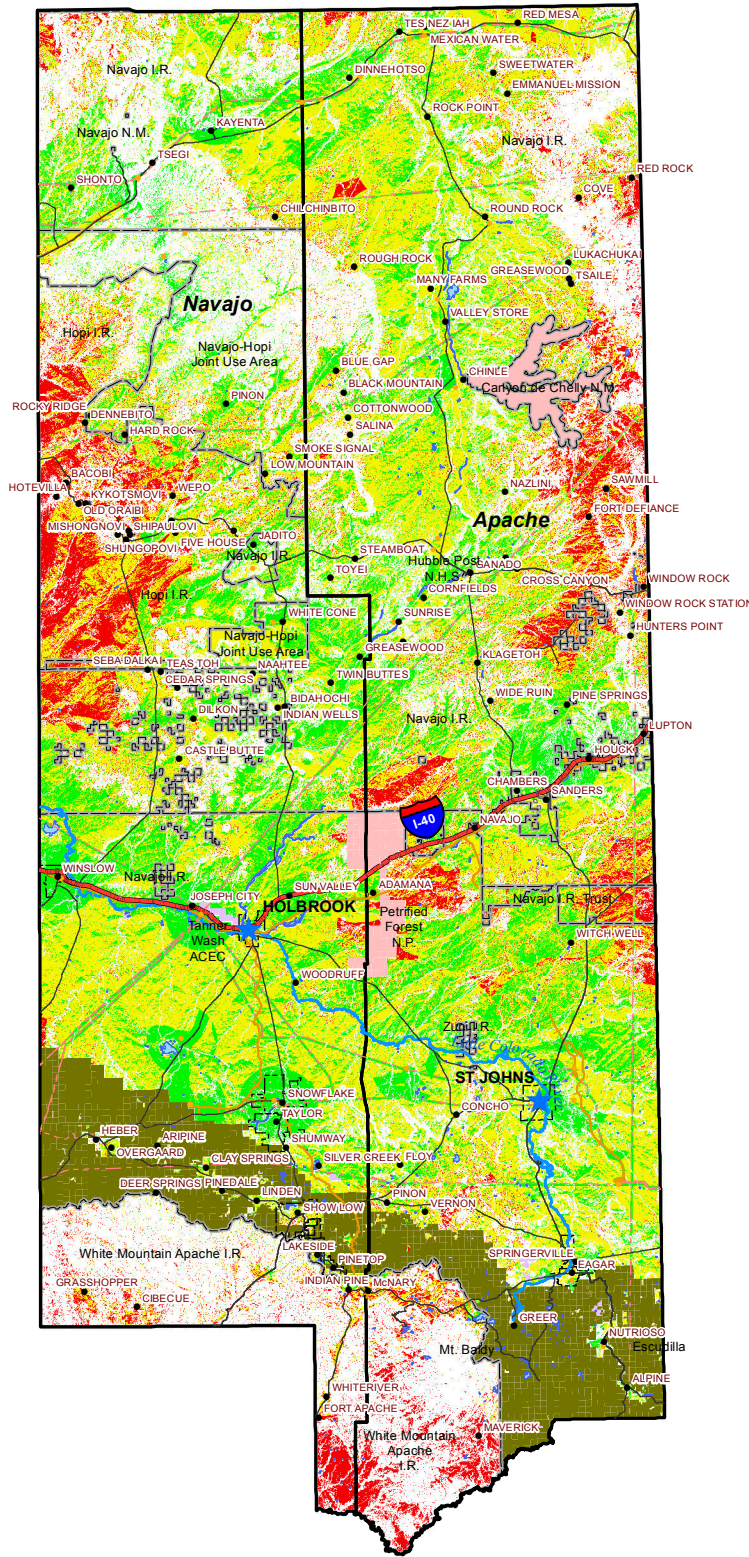


Northeast Arizona: Opportunities for Large-Scale Solar Operations Greater Than 5 Megawatts



| | | | |
|---------------------------------------|---------------------|-------------------------------------|----------------------|
| ★ County Seat | ▭ Northeast Region | ▭ Lake | ▭ Low Potential |
| • Community | - - - City Boundary | ▭ Apache-Sitgreaves National Forest | ▭ Moderate Potential |
| • Substation | ▭ Reservation | ▭ National Park or Monument | ▭ High Potential |
| — Interstate | ▭ Indian Allotment | ▭ Conservation Area | |
| — U.S. or State Highway | | ▨ Wilderness | |
| — Railroad | | | |
| — Little Colorado River | | | |
| - - - Transmission Line 115kV - 500kV | | | |

Large-Scale Solar Potential:

Low Potential - 1,069,726 acres
 Moderate Potential - 4,573,619 acres
 High Potential - 2,317,368 acres

This is not a survey product. The information is derived from various national, state and county GIS databases. The University does not assume any liability for damages arising from errors, omissions, or use of this information. Users of this map are advised to be aware of the locational accuracy, data collection dates, compilation methods, and cartographic format.