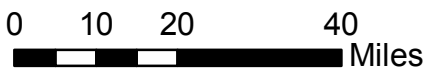
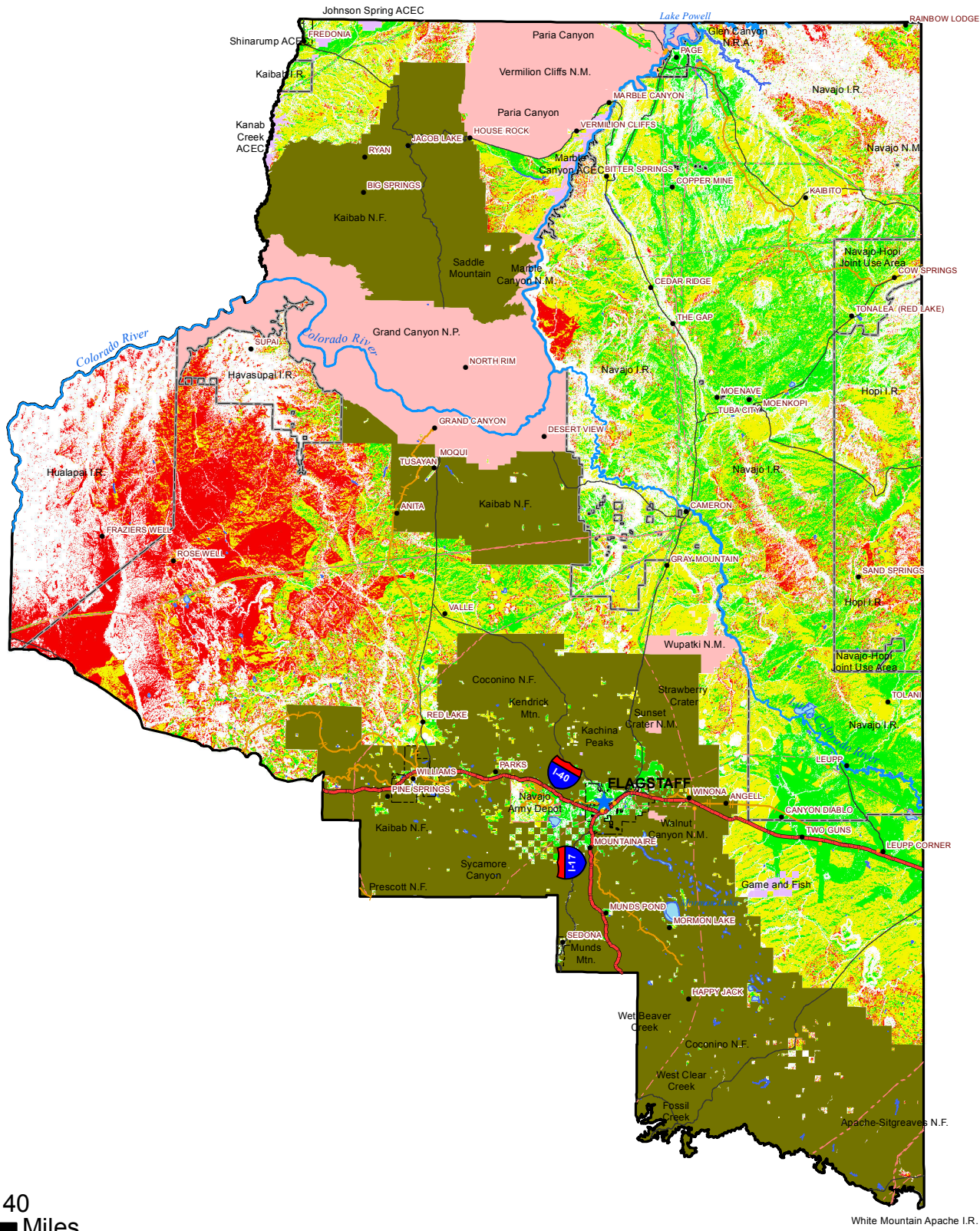


Coconino County, Arizona: Opportunities for Large-Scale Solar Operations Greater Than 5 Megawatts



★ County Seat	□ Coconino County	□ Lake	■ Low Potential
• Community	□ City Boundary	■ National Forest	■ Moderate Potential
• Substation	□ Reservation	■ National Park or Monument	■ High Potential
— Interstate	■ Indian Allotment	■ Conservation Area	
— U.S. or State Highway	□ Navajo Army Depot		
— Railroad			
— River			
— Transmission Line 115kV - 500kV			

Large-Scale Solar Potential:

Low Potential - 1,095,170 acres
 Moderate Potential - 2,497,656 acres
 High Potential - 1,588,900 acres

This is not a survey product. The information is derived from various national, state and county GIS databases. The University does not assume any liability for damages arising from errors, omissions, or use of this information. Users of this map are advised to be aware of the locational accuracy, data collection dates, compilation methods, and cartographic format.