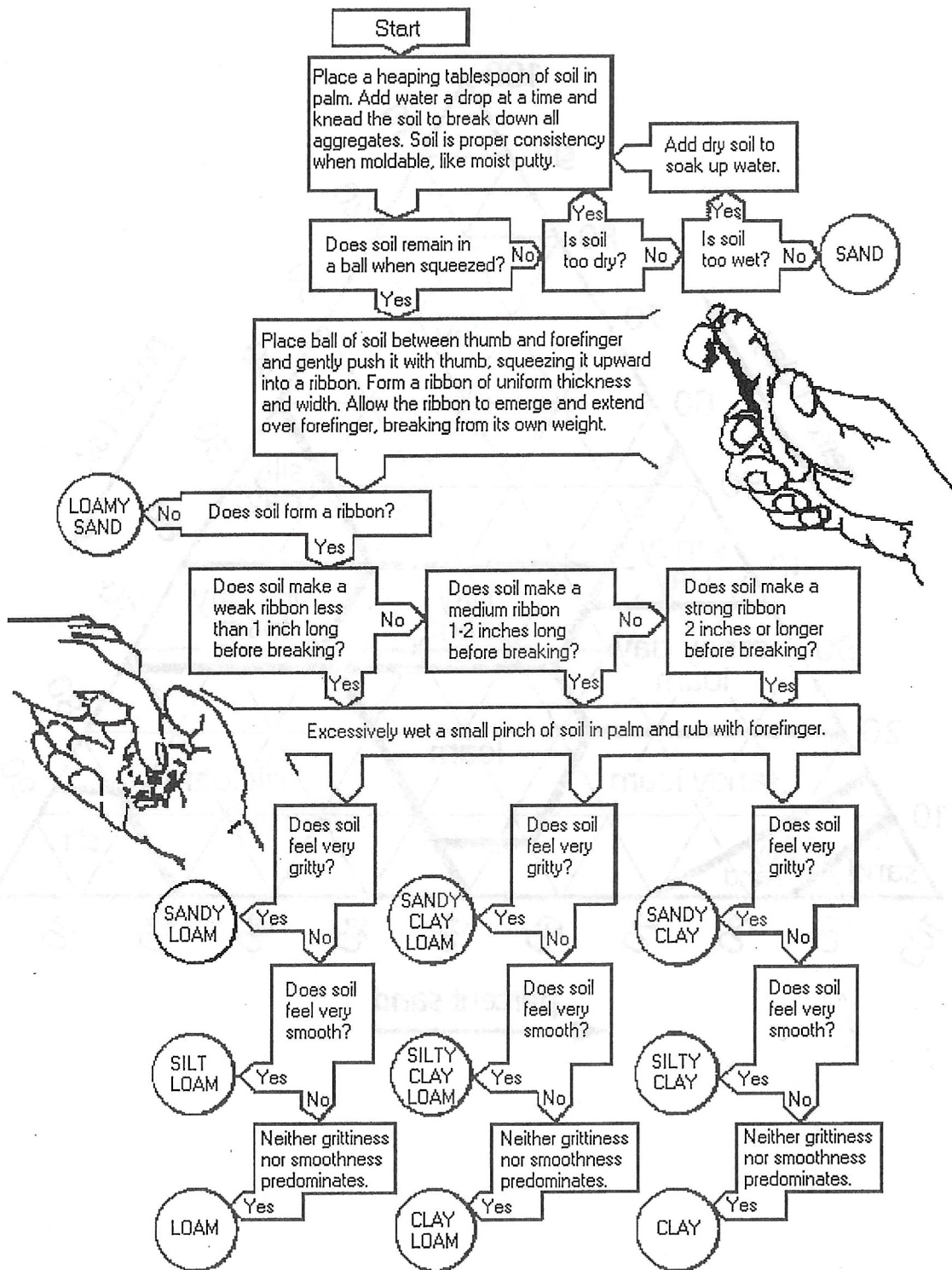


Soil Texture by Feel

Follow the simple instructions on this page to estimate soil texture by feel. Once experienced, this method gives accurate and repeatable results. Soil should be passed through a 2 mm sieve prior to starting the procedure. Adapted with permission; originally published in Thien, Steve, "A flow diagram for teaching texture-by-feel analysis," *Journal of Agronomic Education*, 1979, vol. 8, pp. 54-55.



Soil Textural Triangle

