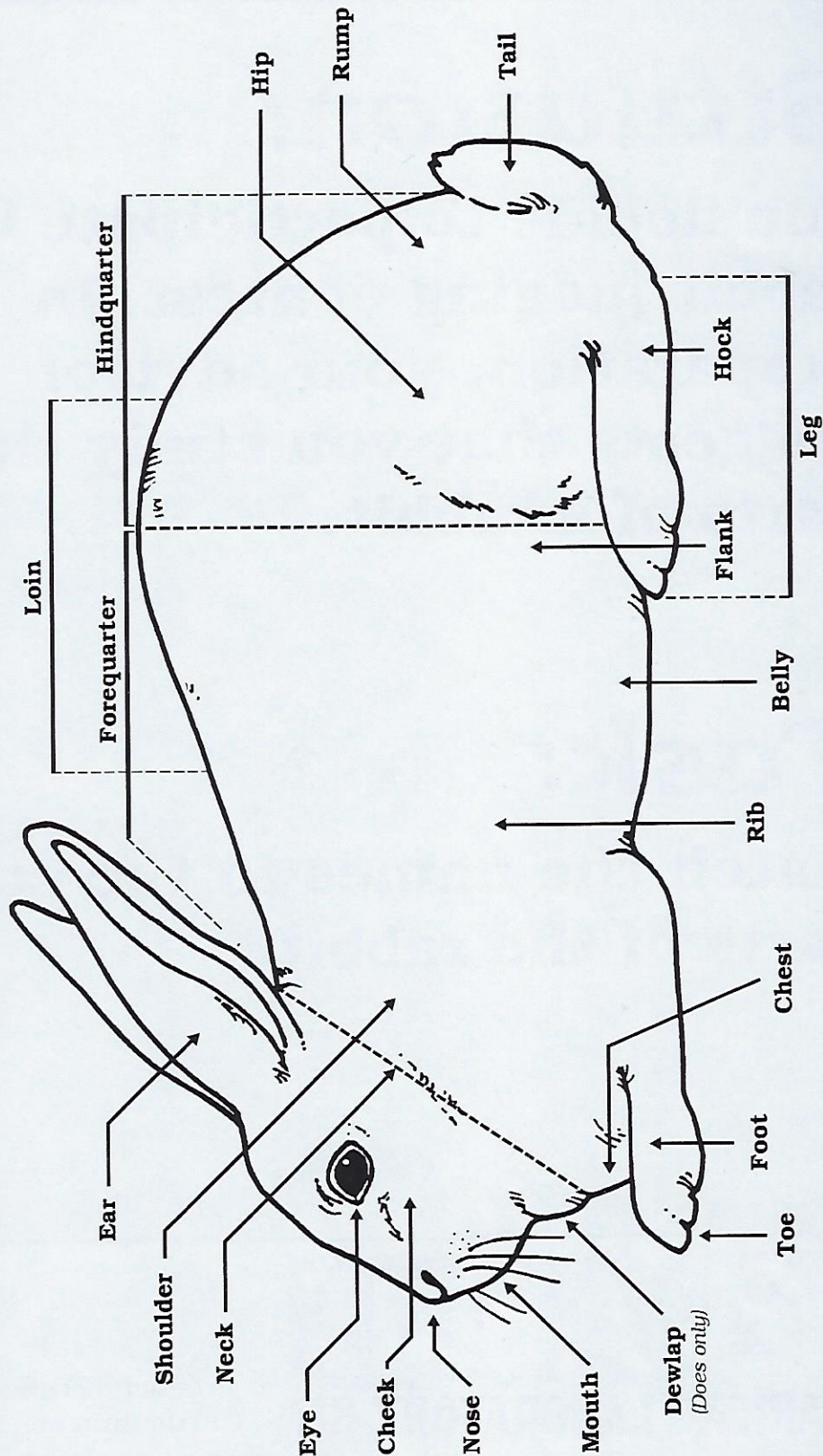


Use this poster in conjunction with **Anatomy - Match the names to the correct parts of the rabbit** situation/task statement and/or **Parts of a Rabbit** identification tags.

Parts of a Rabbit



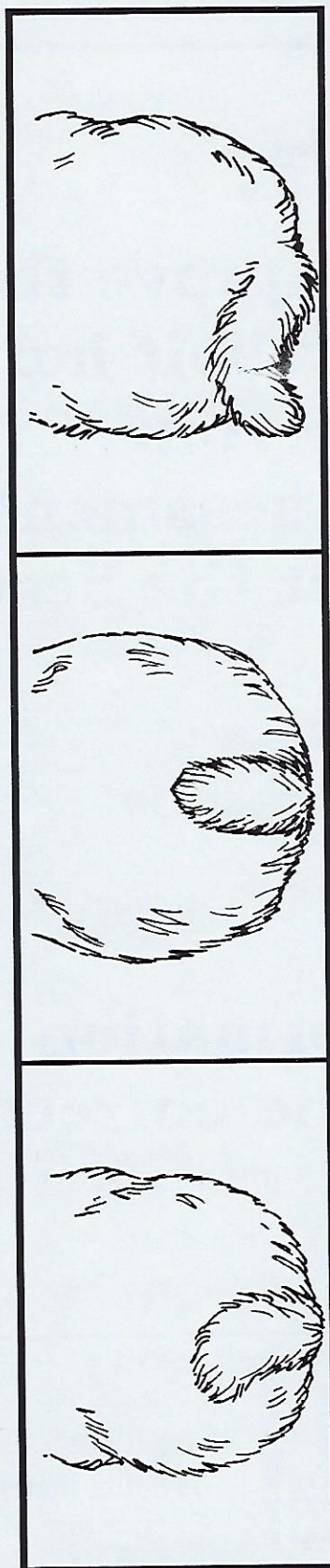
Exploratory Learning: Educational Program

This component adapted from materials found in *Raising Rabbits I*
 © The Ohio State University, 1985 - Ohio State University Extension 4-H Youth Development.
 Graphic property of Curriculum Materials Service.

Product distribution through the Curriculum Materials Service

Use this poster in conjunction with **Conformation** - Match the conformation description to the correct diagram situation/task statement and/or **Conformation (Tails/Ears)** identification tags.

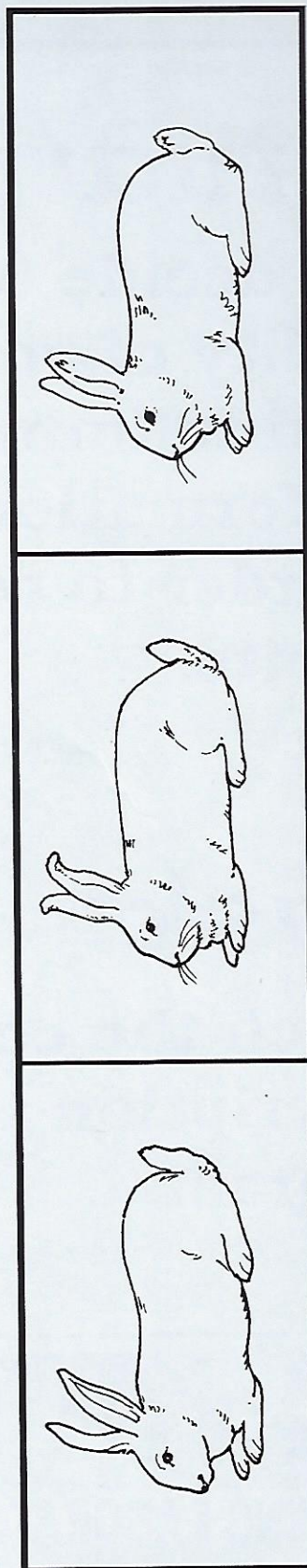
Rabbit Conformation (Tails/Ears)



Side-Carried Tail

Ideal Tail

Screw Tail



Open-Carried Ears

Belled Ears

Ideal Ears



RABBIT
LEARNING LABORATORY KIT

Exploratory Learning: Educational Program

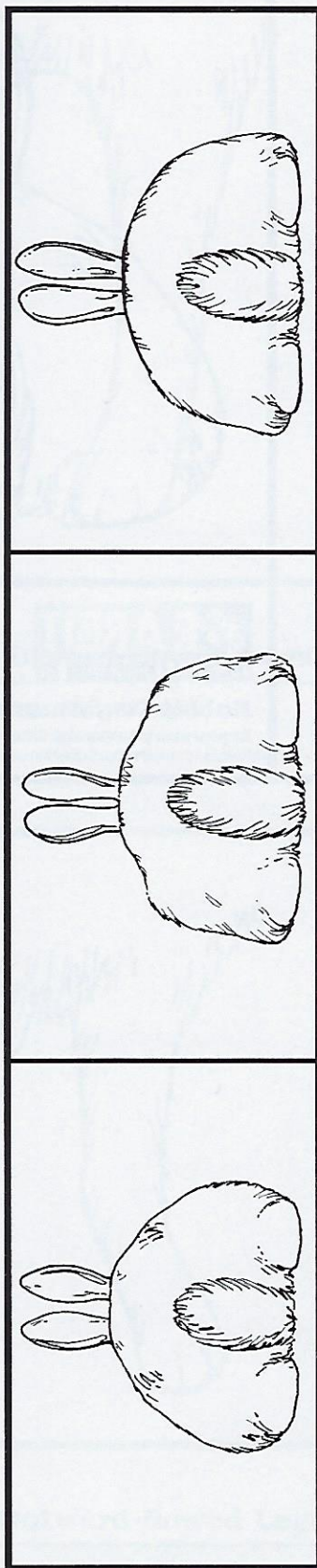
This component adapted from materials used by Judy Conrad, Extension Agent, Ohio State University Extension - Pickaway County.
Graphics property of Curriculum Materials Service.

Product distribution through the Curriculum Materials Service

Use this poster in conjunction with **Conformation - Match the conformation description to the correct diagram situation/task statement and/or Conformation (Hips/Legs) identification tags.**

Rabbit Conformation

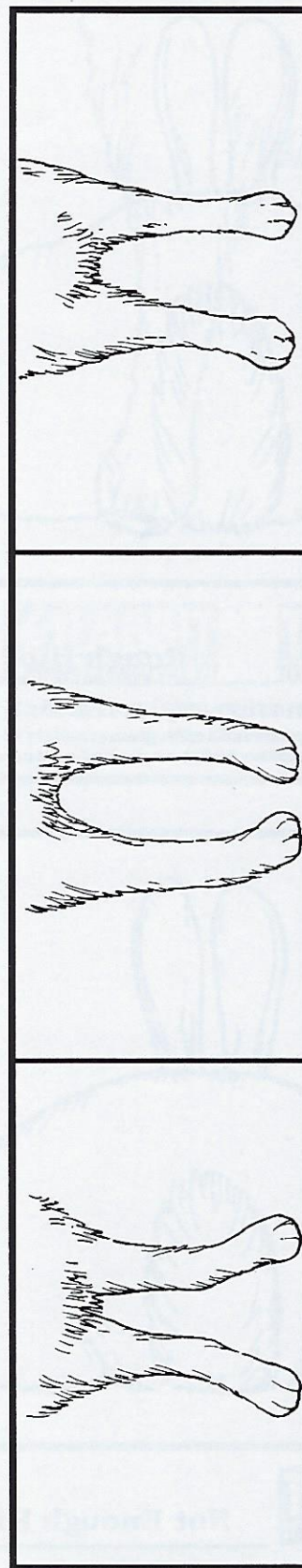
(Hips/Legs)



Ideal Hips

Rough Hips

Not Enough Rise



Outward-Bowed Legs

Inward-Bowed Legs

Ideal Legs



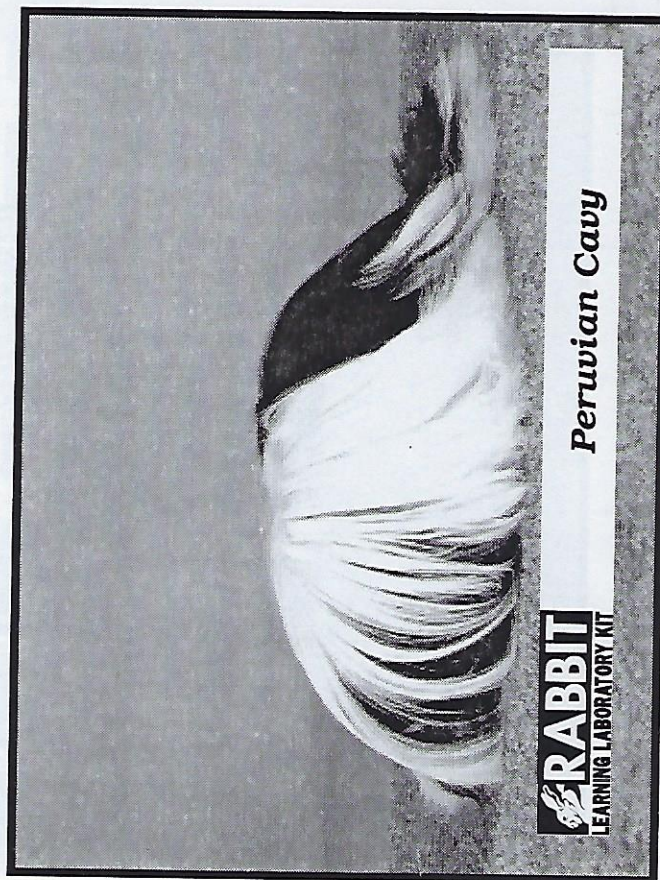
RABBIT
LEARNING LABORATORY KIT

Exploratory Learning: Educational Program

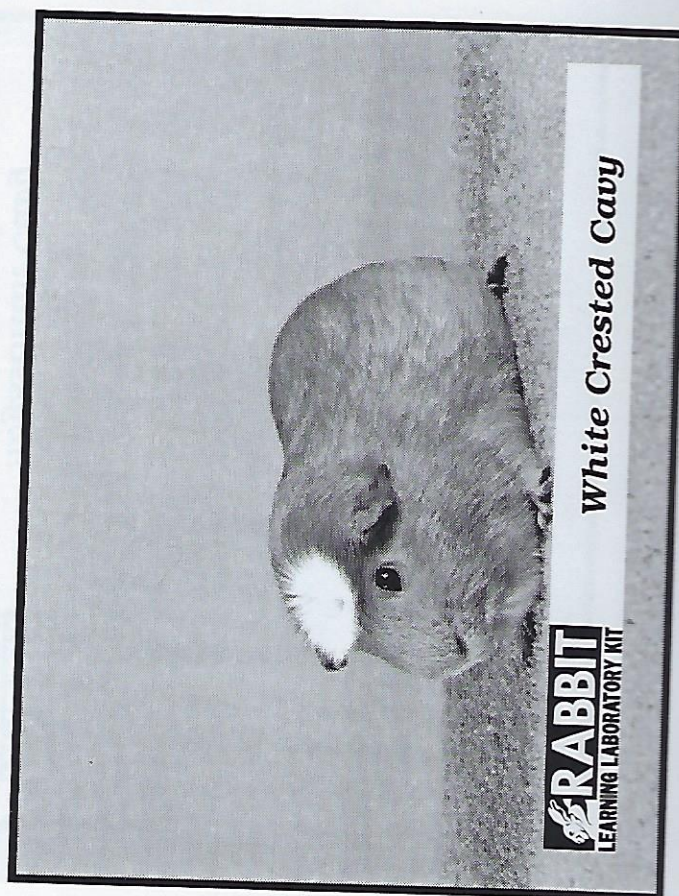
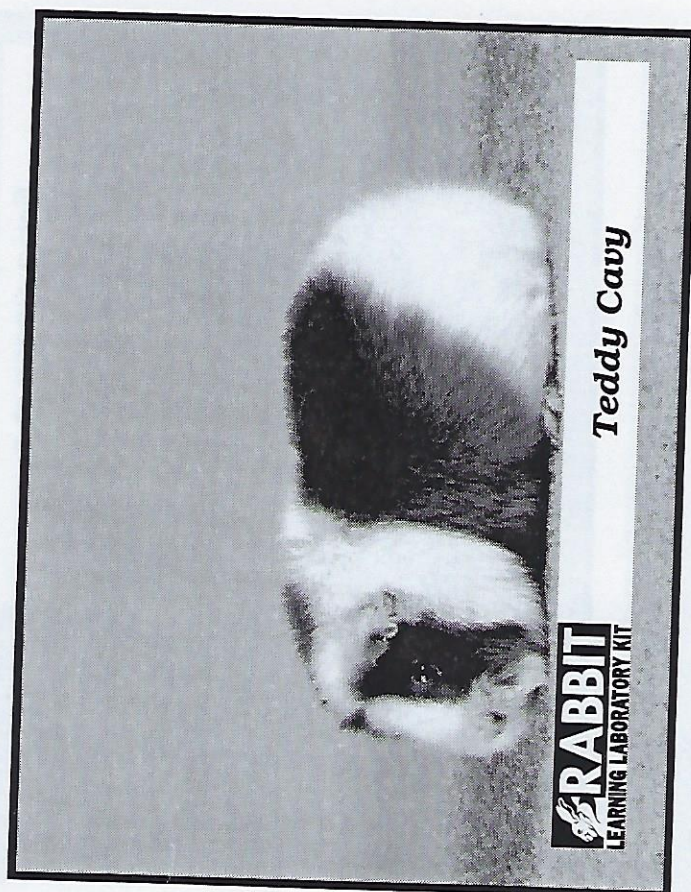
This component adapted from materials used by Judy Conrad, Extension Agent, Ohio State University Extension - Pickaway County.
Graphics property of Curriculum Materials Service.

Product distribution through the Curriculum Materials Service

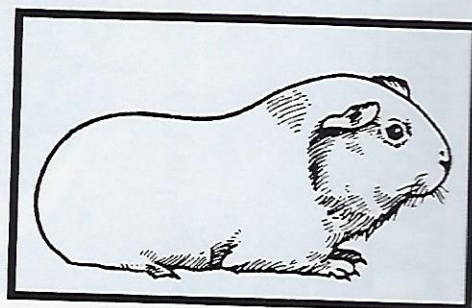
Use these prints in conjunction with **Cavy Breeds** identification tags, **Breeds - Match breed name** to print situation/task statement, and/or **Cavy Breed Traits** description tags.



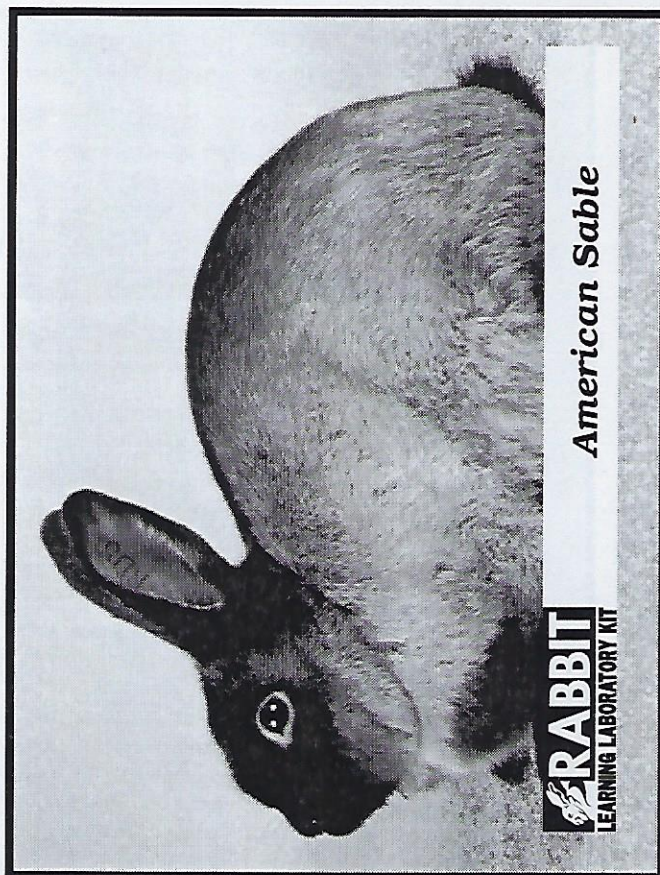
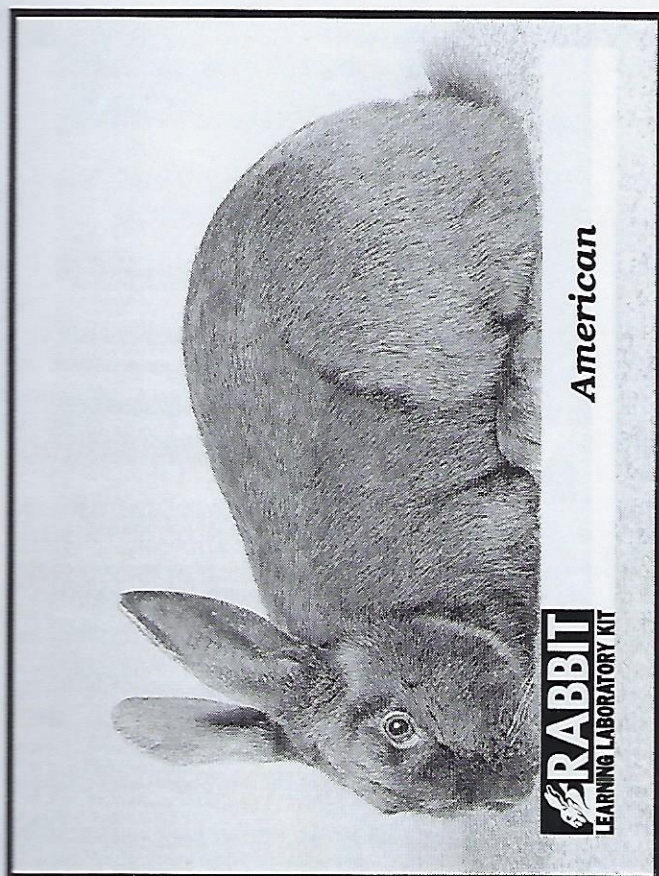
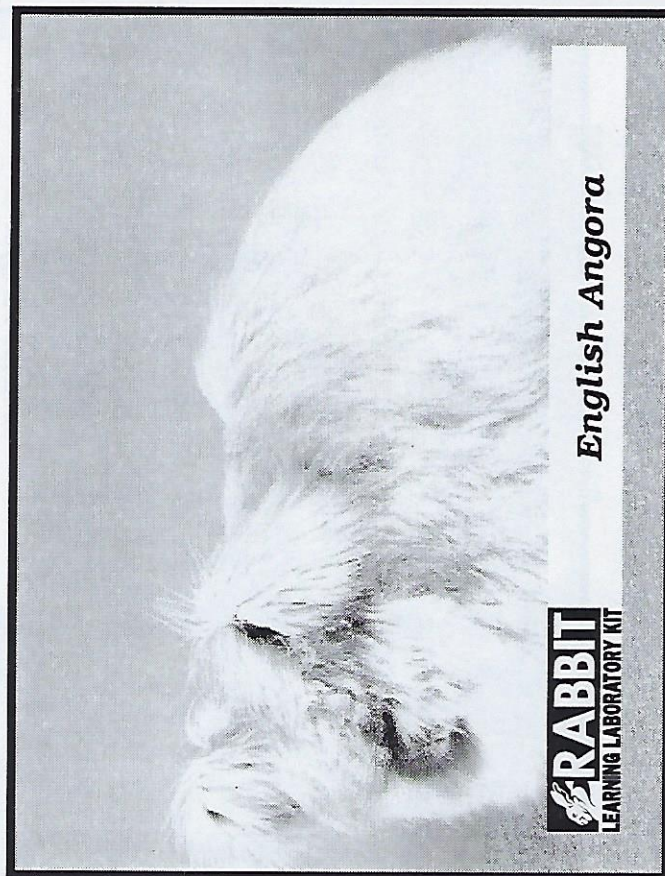
Use these prints in conjunction with **Cavy Breeds** identification tags, **Breeds - Match breed name** to print situation/task statement, and/or **Cavy Breed Traits** description tags.



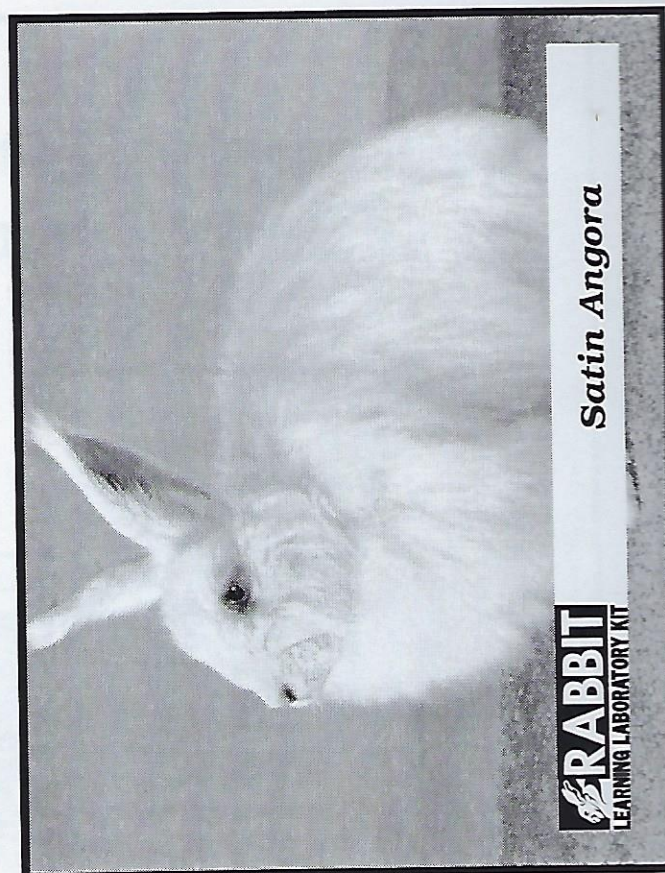
Cavy Breeds



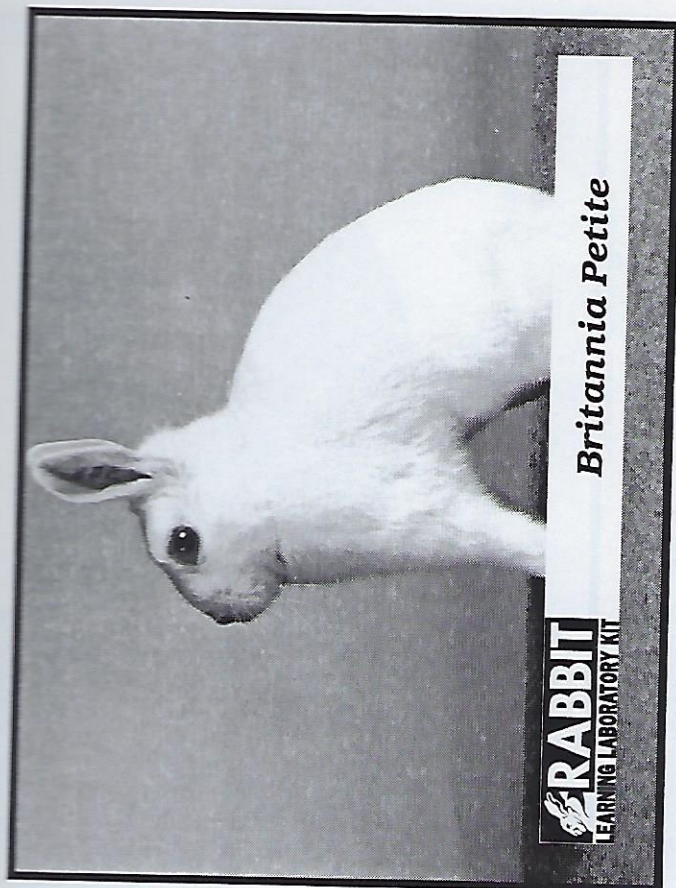
Use these prints in conjunction with **Breeds of Rabbits** identification tags, **Breeds - Match breed name to print situation/task statement**, and/or **Rabbit Breed Traits** description tags.



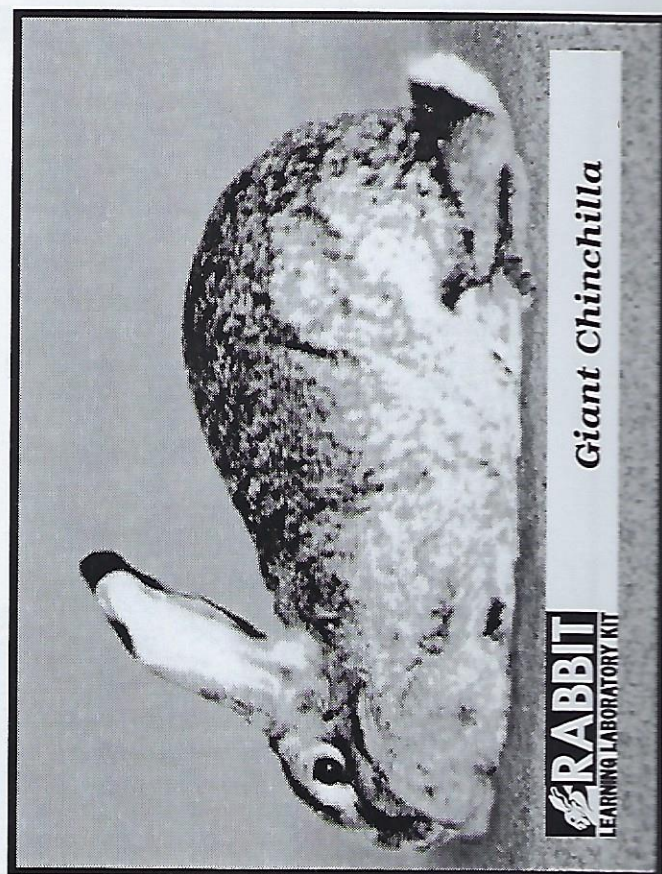
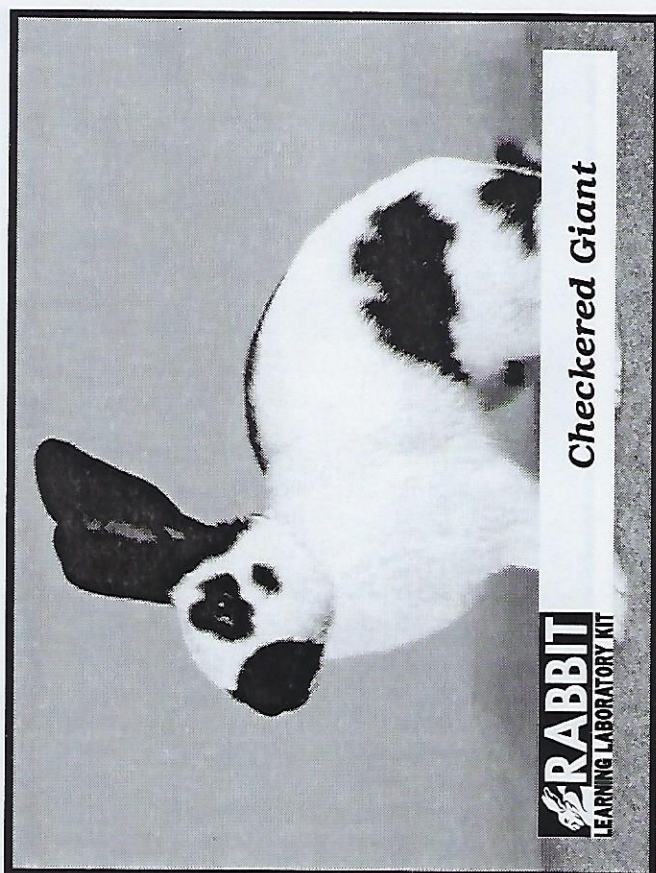
Use these prints in conjunction with **Breeds of Rabbits** identification tags, **Breeds - Match breed name to print** situation/task statement, and/or **Rabbit Breed Traits** description tags.



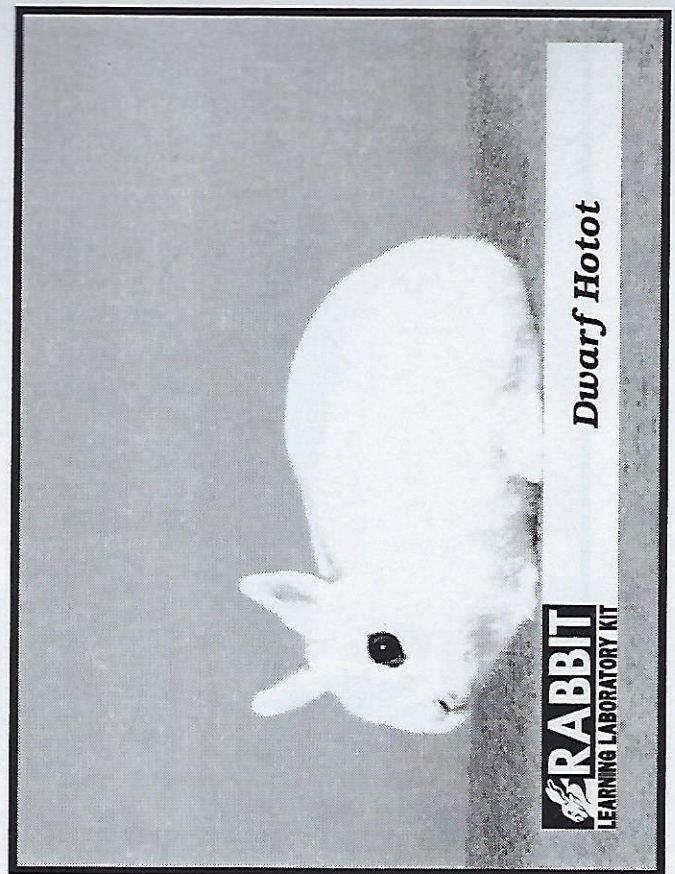
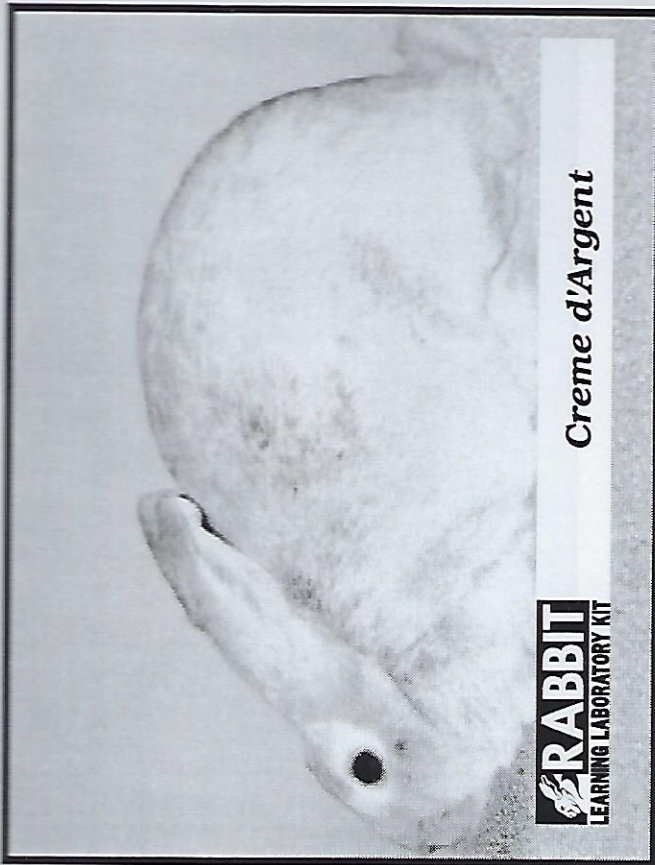
Use these prints in conjunction with **Breeds of Rabbits** identification tags, **Breeds - Match breed name to print situation/task statement**, and/or **Rabbit Breed Traits** description tags.



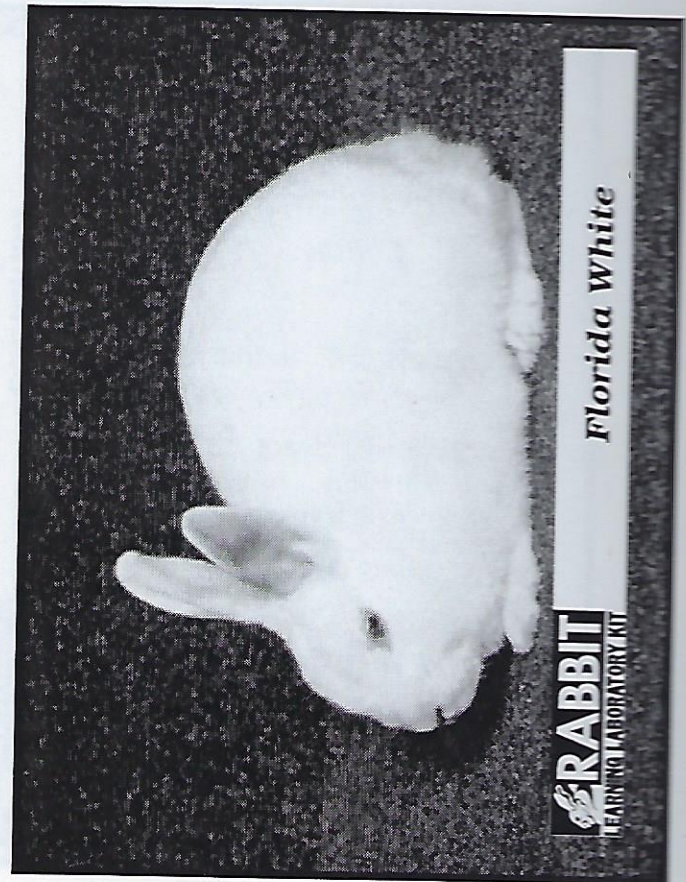
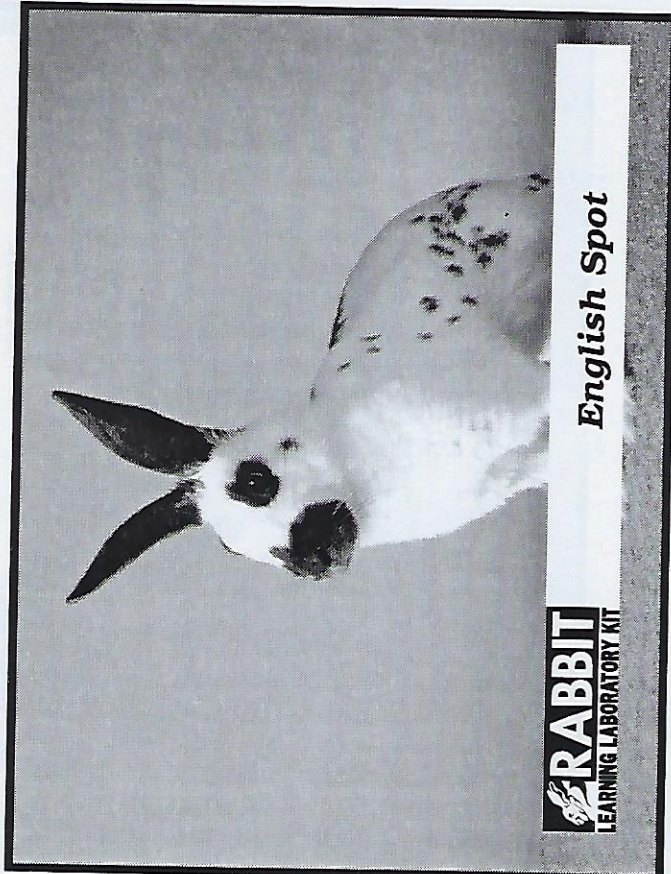
Use these prints in conjunction with **Breeds of Rabbits** identification tags, **Breeds - Match breed name to print** situation/task statement, and/or **Rabbit Breed Traits** description tags.



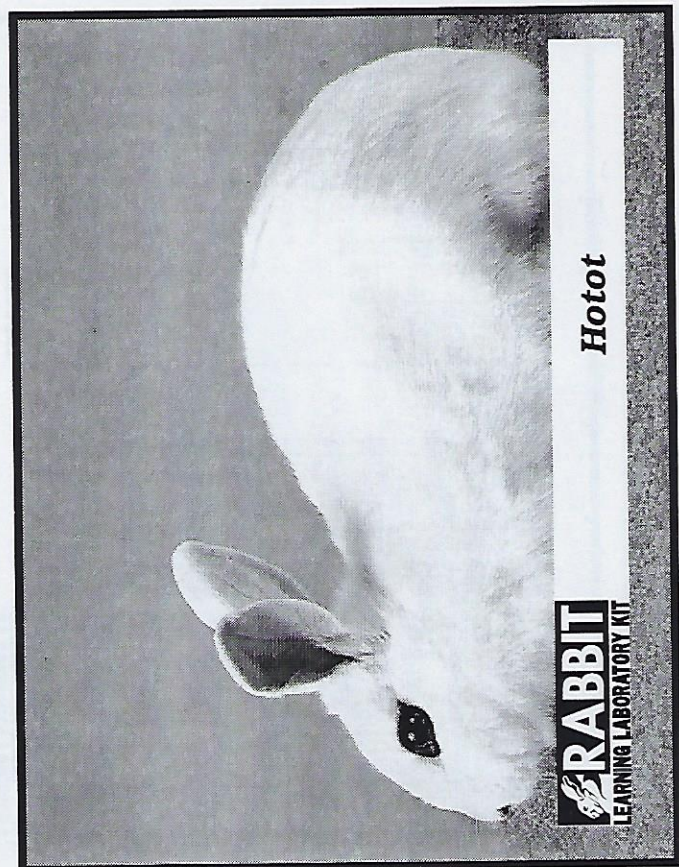
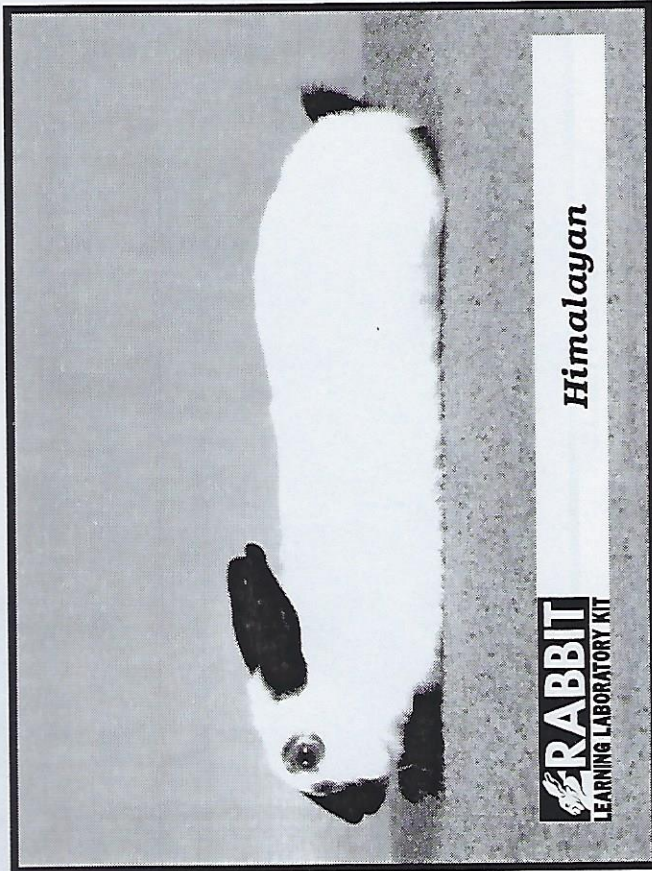
Use these prints in conjunction with Breeds of Rabbits identification tags, Breeds - Match breed name to print situation/task statement, and/or Rabbit Breed Traits description tags.



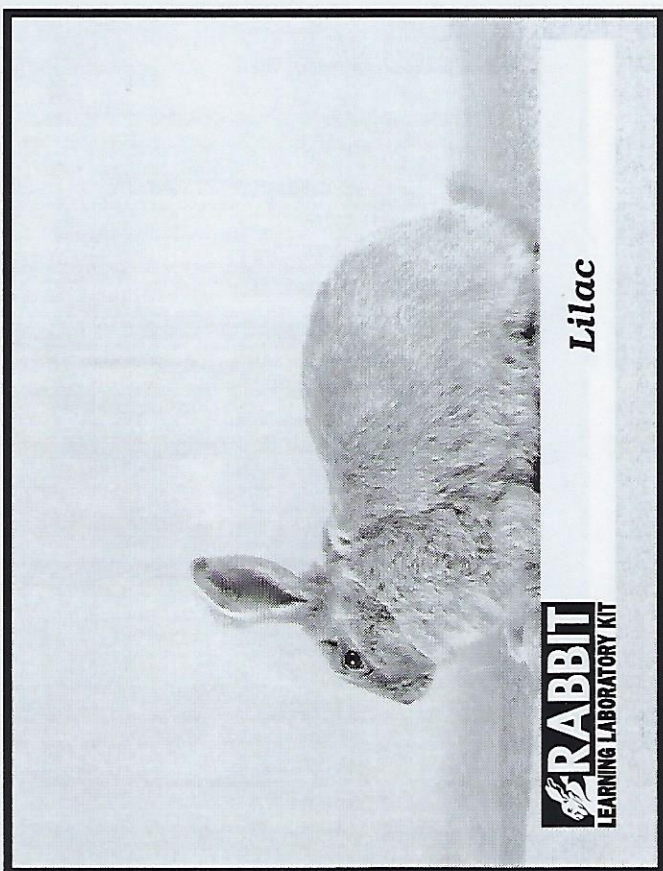
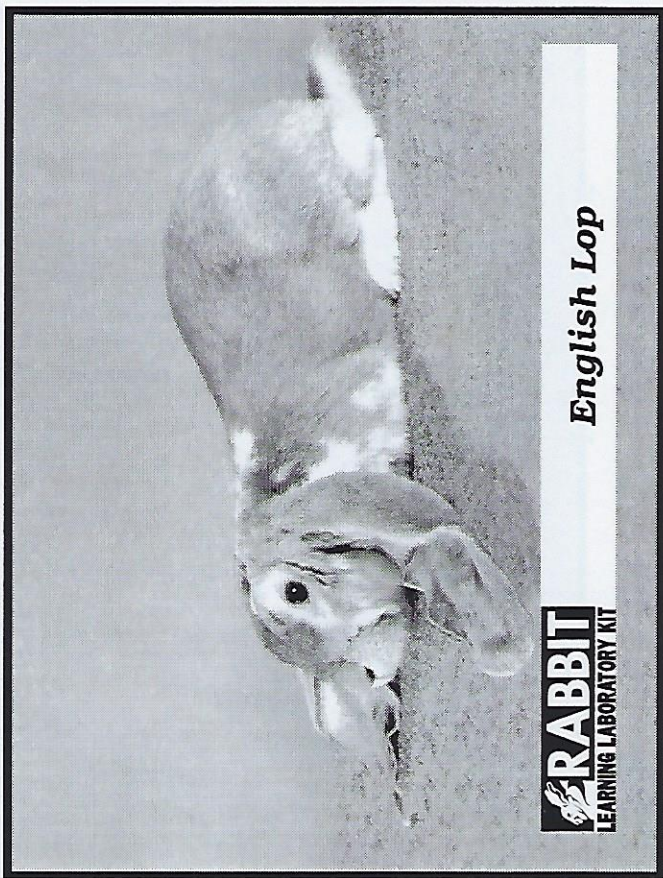
Use these prints in conjunction with Breeds of Rabbits Identification tags, Breeds - Match breed name to print situation/task statement, and/or Rabbit Breed Traits description tags.



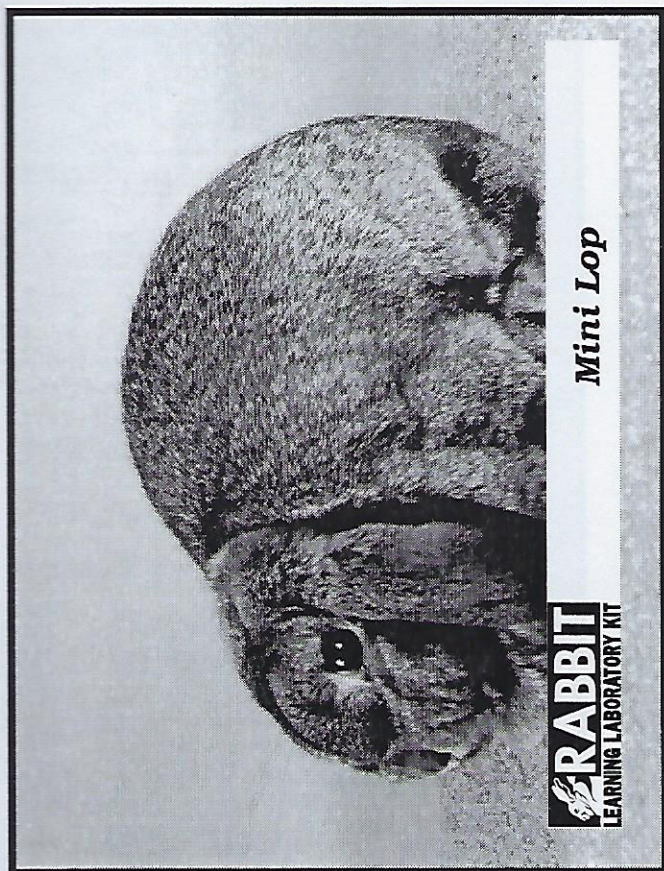
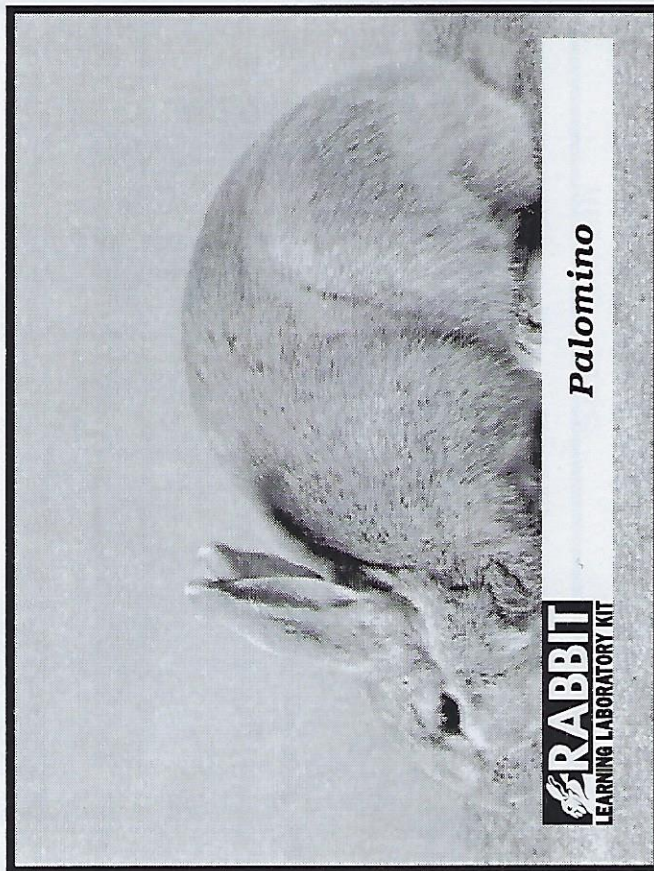
Use these prints in conjunction with **Breeds of Rabbits** identification tags, **Breeds - Match breed name to print situation/task statement**, and/or **Rabbit Breed Traits** description tags.



Use these prints in conjunction with **Breeds of Rabbits** identification tags, **Breeds - Match breed name to print situation/task statement**, and/or **Rabbit Breed Traits** description tags.



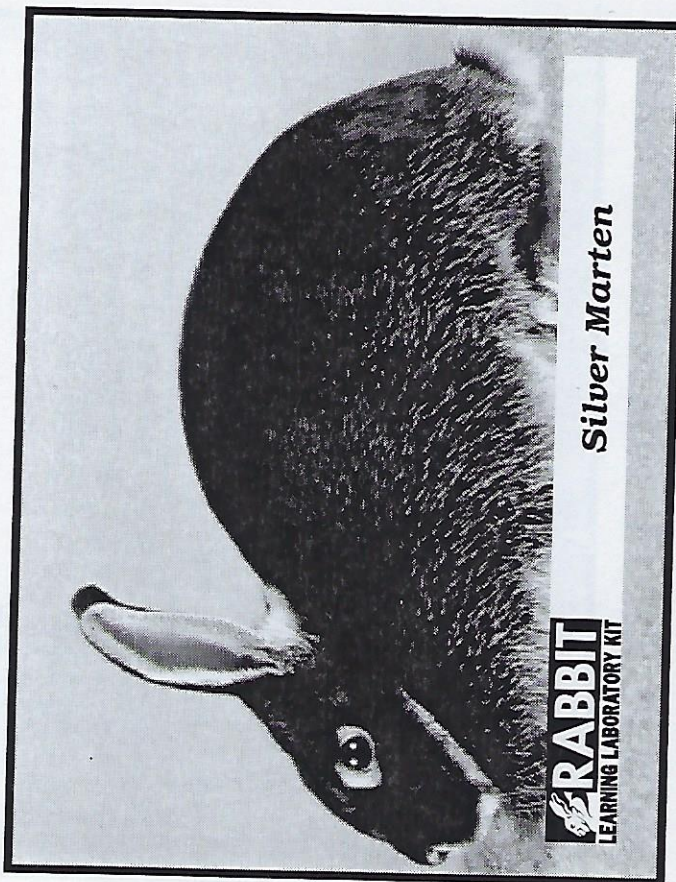
Use these prints in conjunction with **Breeds of Rabbits** identification tags, **Breeds - Match breed name to print situation/task statement**, and/or **Rabbit Breed Traits** description tags.



Use these prints in conjunction with **Breeds of Rabbits** identification tags, **Breeds - Match breed name to print** situation/task statement, and/or **Rabbit Breed Traits** description tags.



Use these prints in conjunction with **Breeds of Rabbits** identification tags, **Breeds - Match breed** name to print situation/task statement, and/or **Rabbit Breed Traits** description tags.



Use these prints in conjunction with **Breeds of Rabbits** identification tags, **Breeds - Match breed name to print** situation/task statement, and/or **Rabbit Breed Traits** description tags.



RABBIT

LEARNING LABORATORY KIT