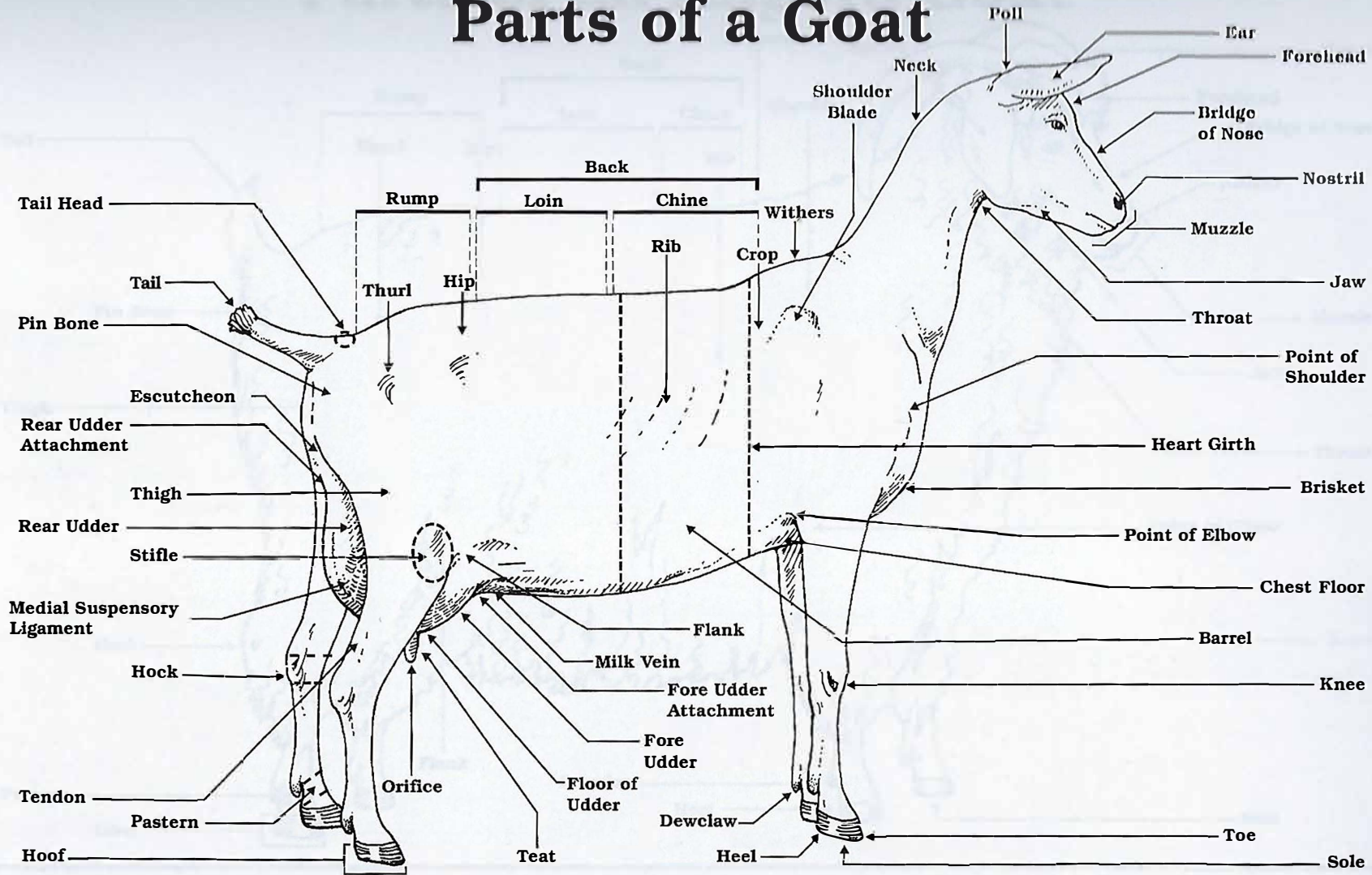


Parts of a Goat



Use this poster in conjunction with Parts of a Goat (Dairy) - Match Correct Part Names with Their Locations on the Diagram situation/task statement and identification tags.

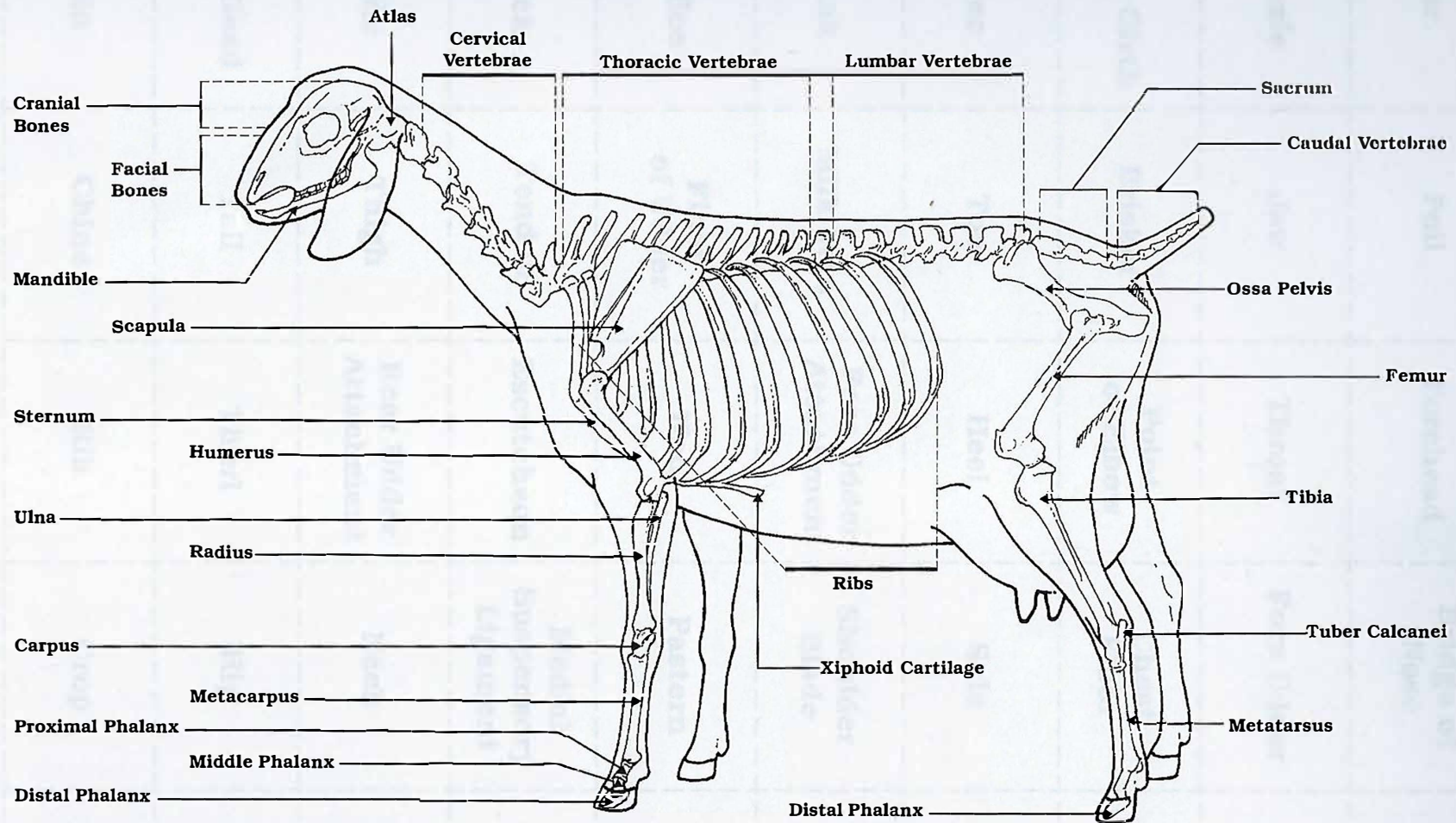


Exploratory Learning: Educational Program

This component adapted from materials of the American Dairy Goat Association

Product distribution through the Curriculum Materials Service

Goat Skeletal System

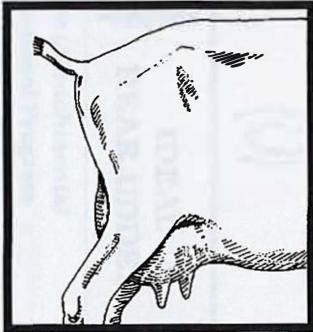


Use this poster in conjunction with Parts of the Goat Skeletal System - Label the Skeleton of the Goat situation/task statement and identification tags.

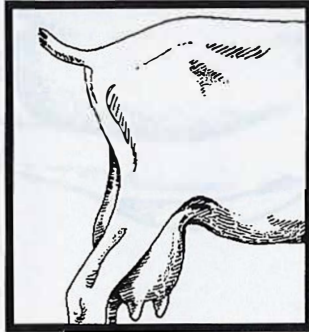


Goat Mammary Structure (Attachments)

Fore Udder Attachments

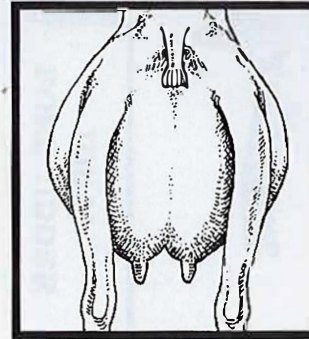


Ideal

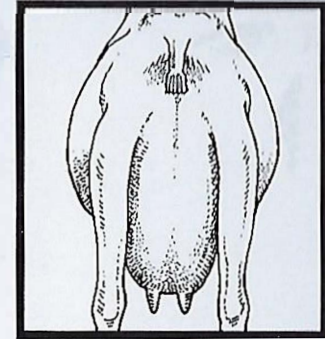


Broken

Rear Udder Attachments

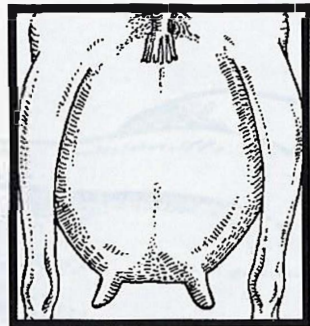


Ideal

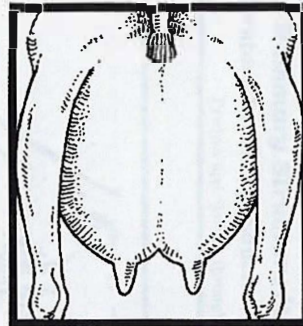


Broken

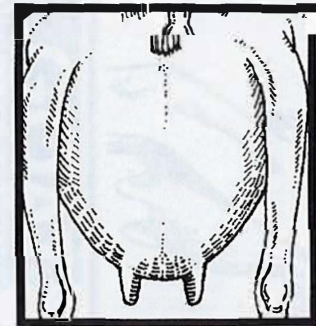
Medial Suspensory Ligaments



Broken



Ideal



Weakened

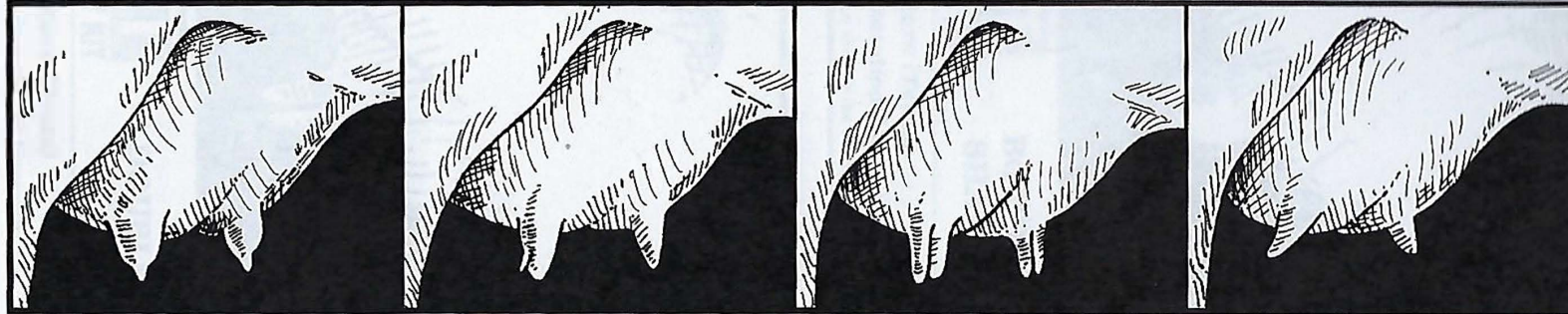


Exploratory Learning: Educational Program

This component developed from materials in the *Dairy Goat Journal*, Helenville, WI

Product distribution through the Curriculum Materials Service

Goat Mammary Structure (Teats)

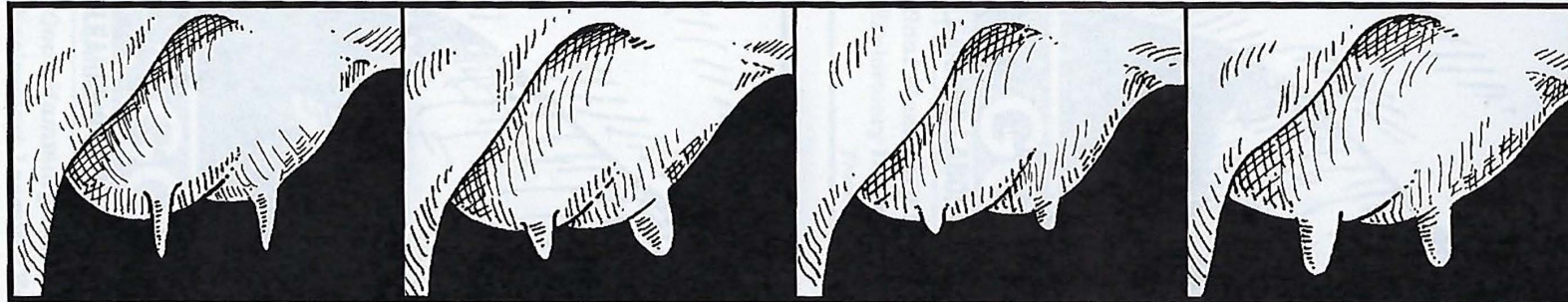


Bottle-Shaped Teats

Spur Teat

Double Teats

Teats that Point Sideways



Pencil-Shaped Teats

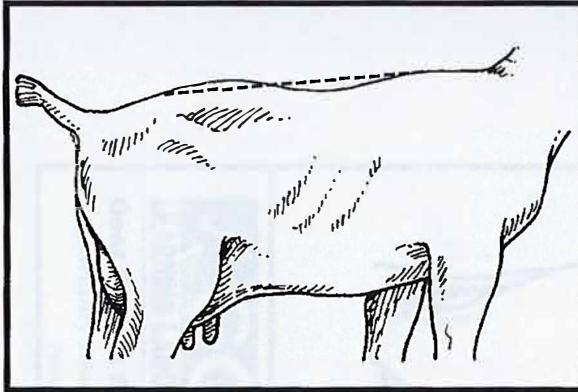
Uneven Teats

Extremely Small Teats

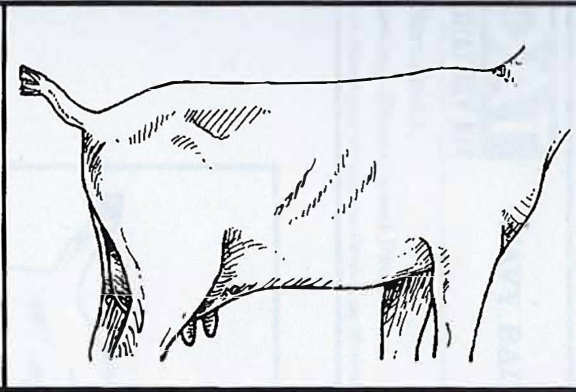
Ideal Teats

Use this poster in conjunction with Goat Mammary Structure (Teats) – Match the Correct Structural Names with the Corresponding Diagrams situation/task statement, and identification tags.

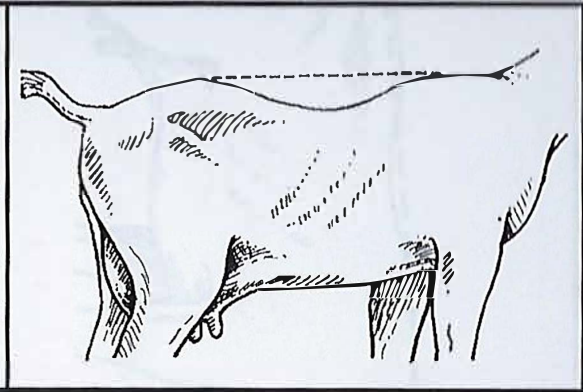
Goat Topline Structure



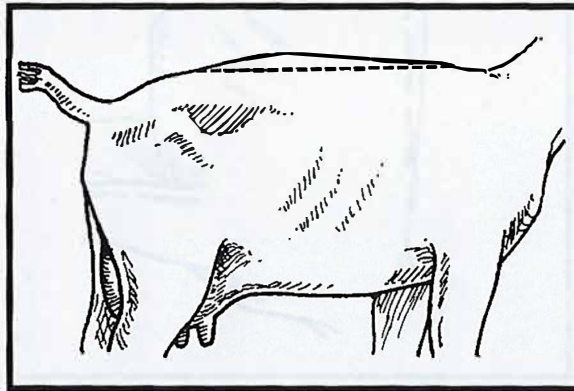
Wavy Back



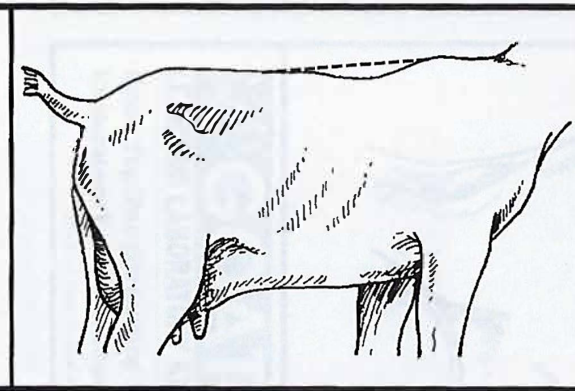
Ideal Back



Sway Back



Roached Back



Weak in the Chine

Use this poster in conjunction with Goat Topline Structure –
Match the Correct Label with Each Topline Structure situation/task statement and identification tags.



Exploratory Learning: Educational Program

This component adapted from materials published in the *Dairy Goat Journal*, Helenville, WI

Product distribution through the Curriculum Materials Service