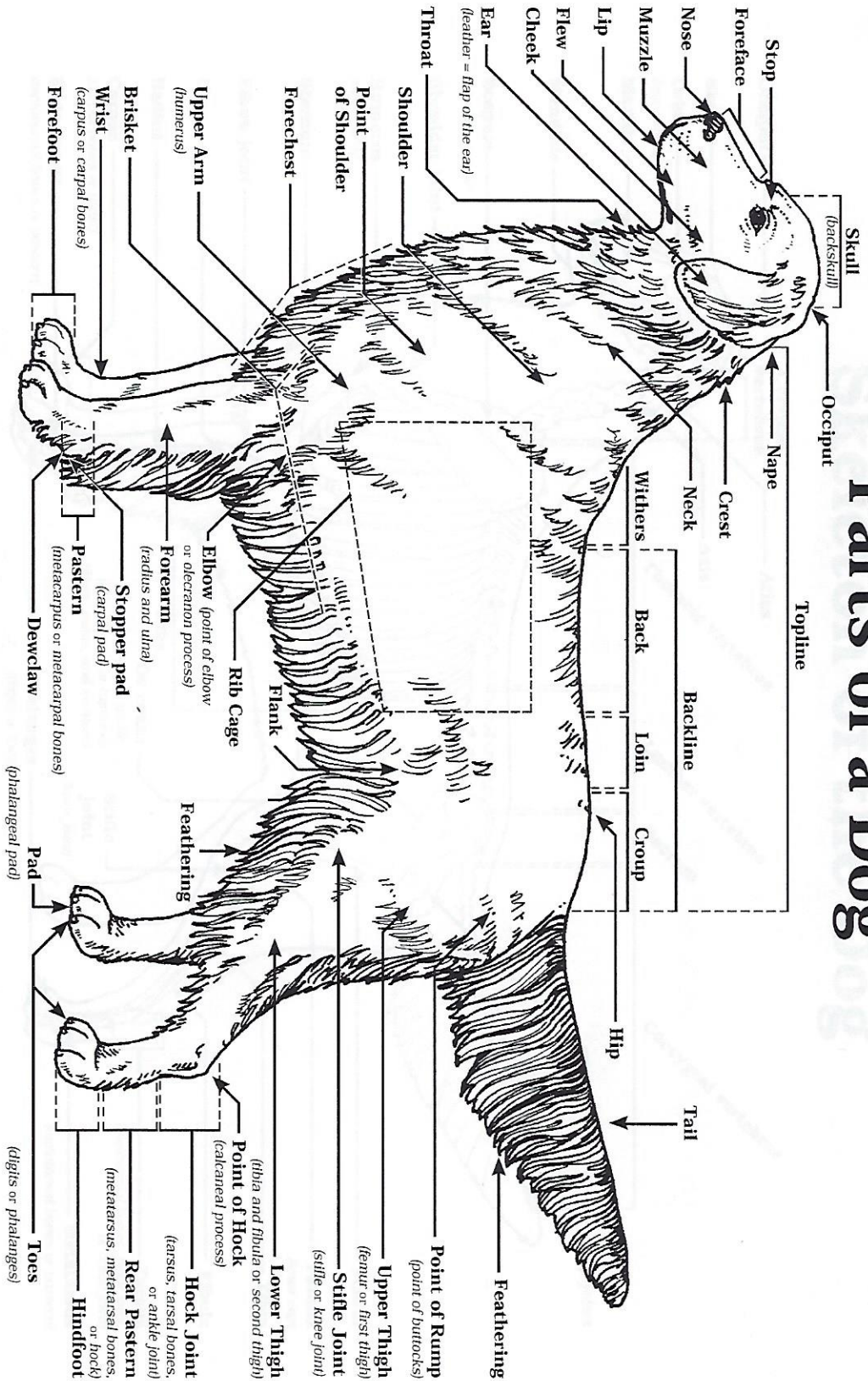


Parts of a Dog



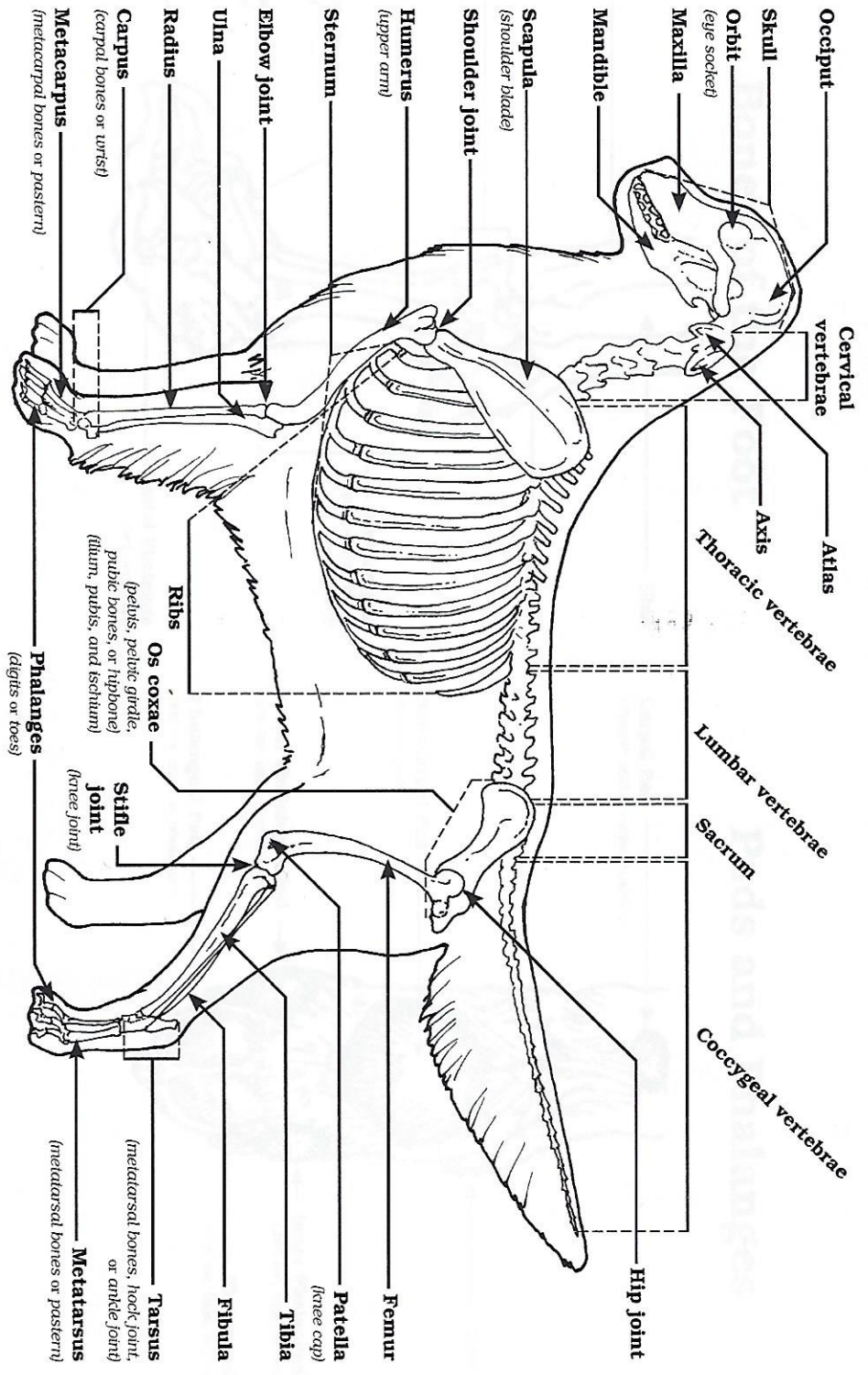
DOG LEARNING LABORATORY KIT

Exploratory Learning: Educational Program
 This component adapted from information found in *The Complete Dog Book, 19th Edition* (©American Kennel Club - 1997) and *K-9 Structure and Terminology* (© E. M. Gilbert Jr. and Theina Brown - 1995).
 Graphic property of Curriculum Materials Service.

Product distribution through the Curriculum Materials Service

Use this poster in conjunction with Match the correct part names with their locations on the diagram situation/task statement and Parts of a Dog identification tags.

Skeleton of the Dog



Use this poster in conjunction with Match the correct skeletal names with their locations on the diagram situation/task statement and Skeleton of the Dog identification tags.



Exploratory Learning: Educational Program
 This component adapted from information found in *The Complete Dog Book, 19th Edition* (©American Kennel Club - 1997) and materials found in *The Anatomy of the Domestic Animals* (Sasson and Grossman - ©W. B. Saunders Company - 1953).
 Graphic property of Curriculum Materials Service.

Product distribution through the Curriculum Materials Service