

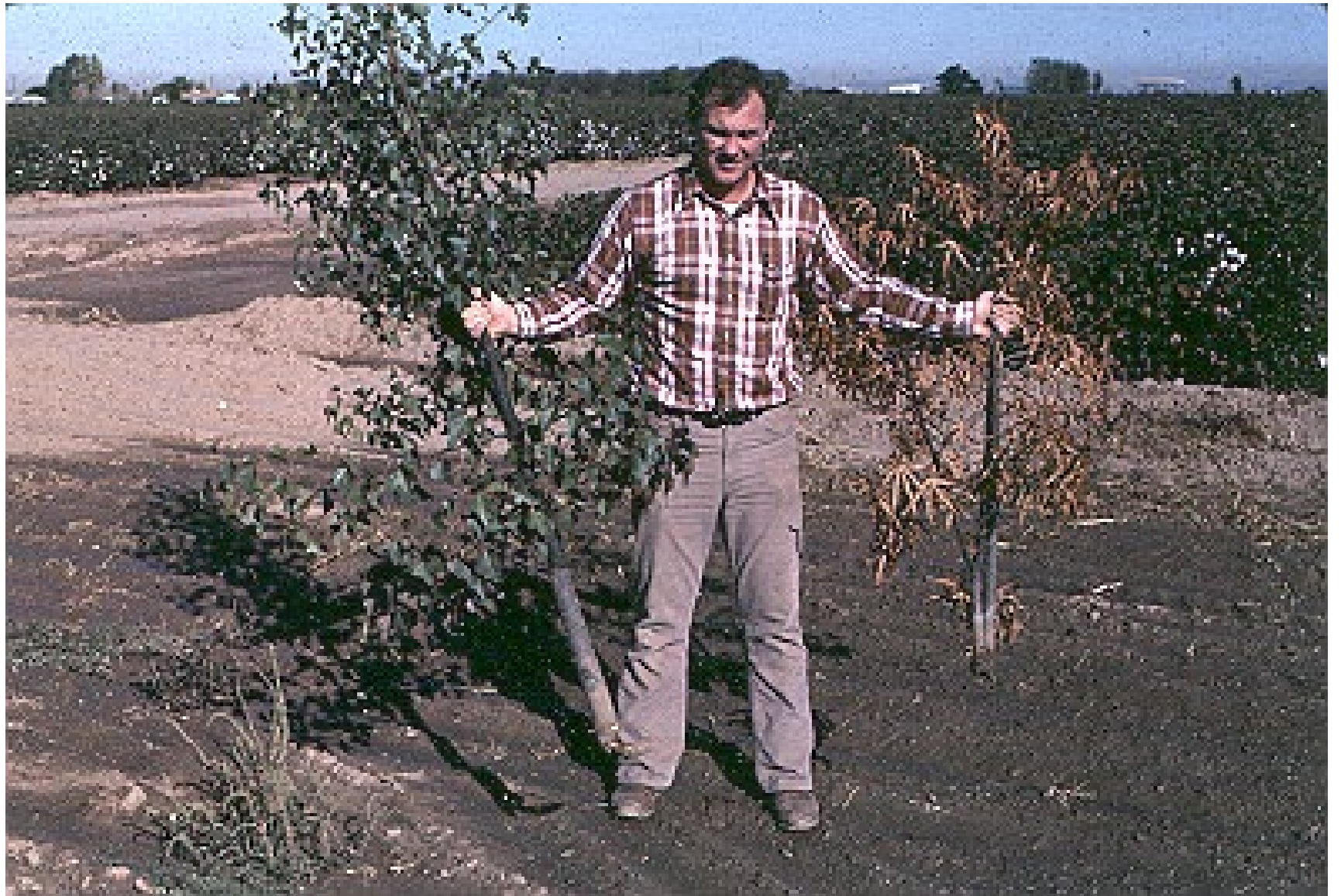
# Pocket Gophers

**Thomomys spp.**



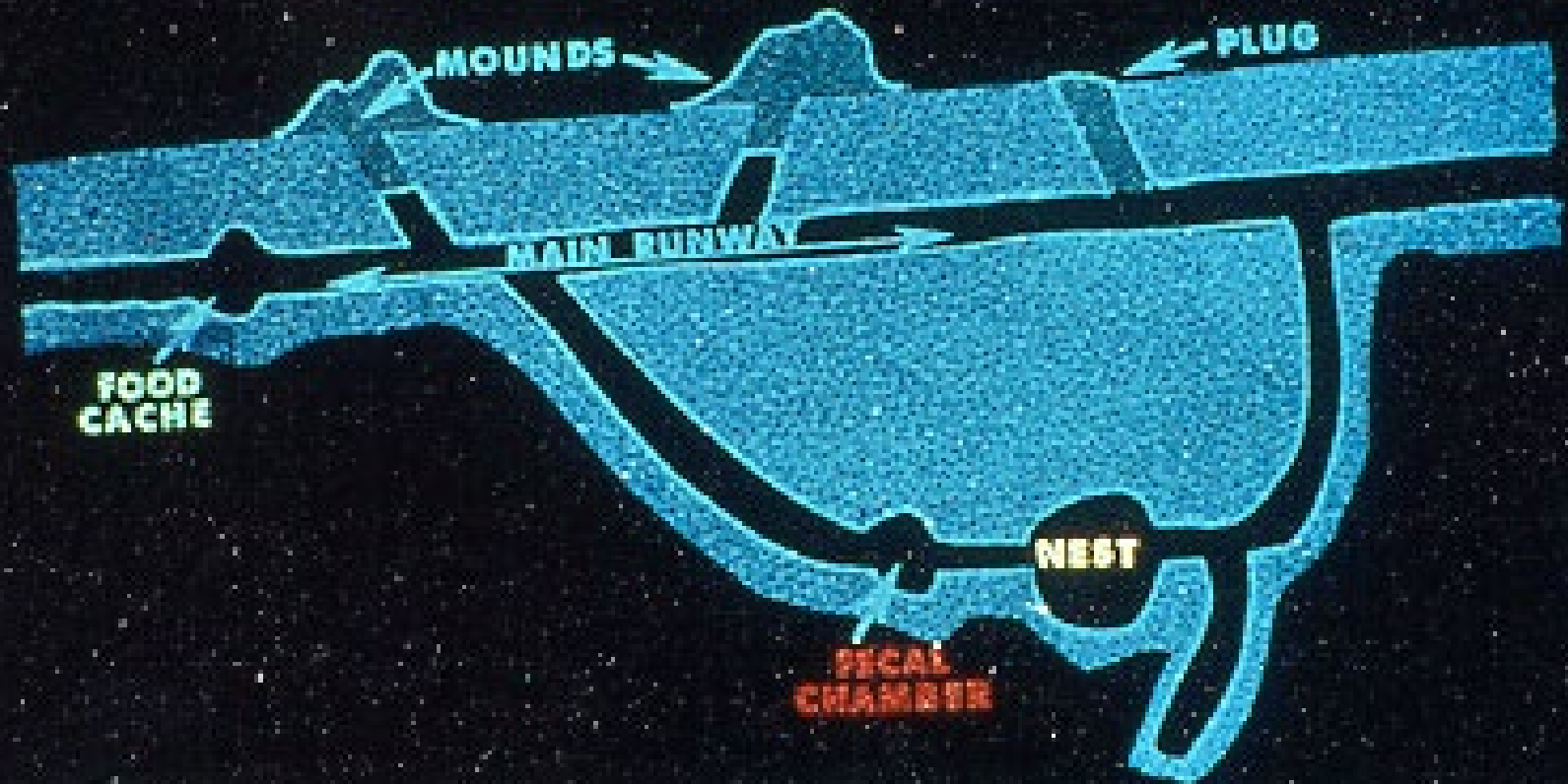


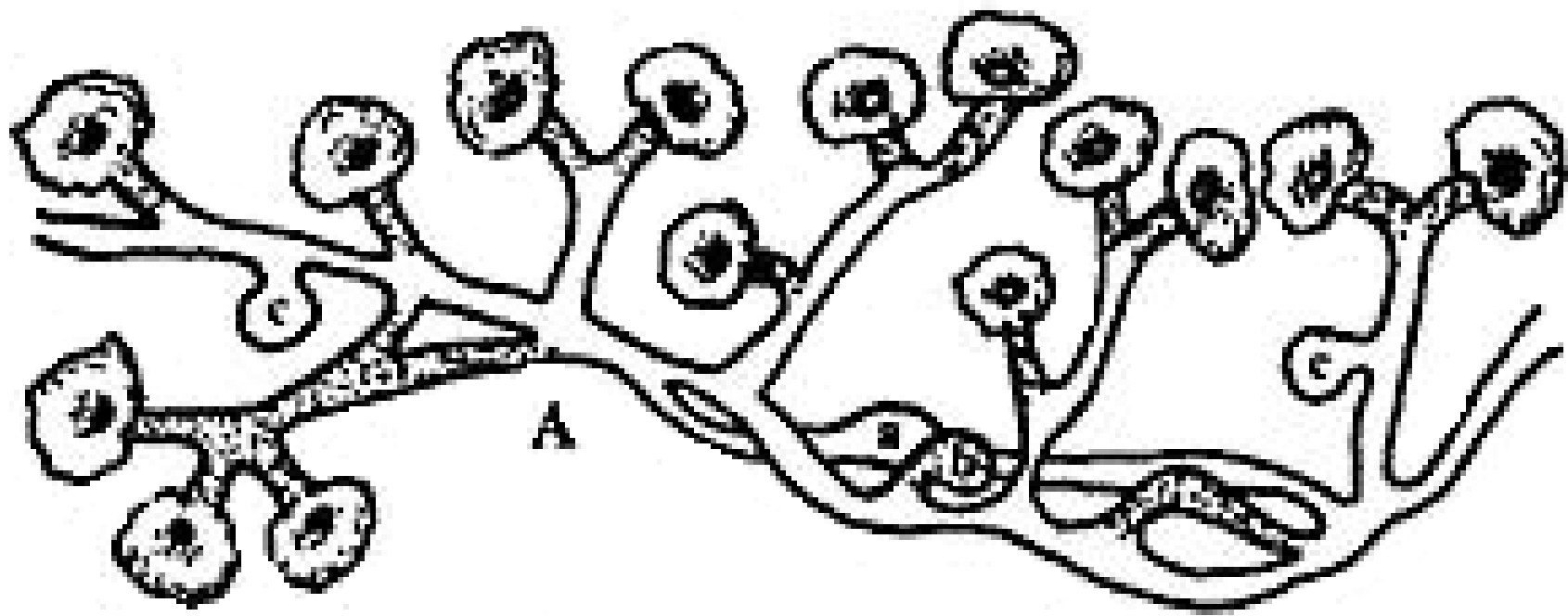




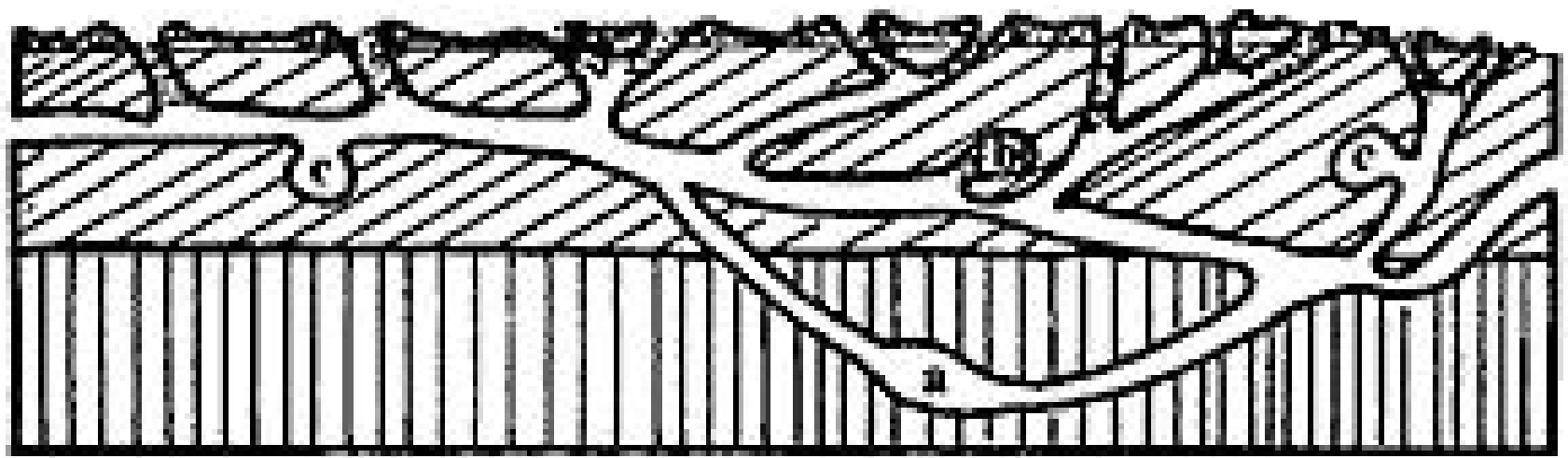


# LATERAL VIEW OF A GOPHER SYSTEM



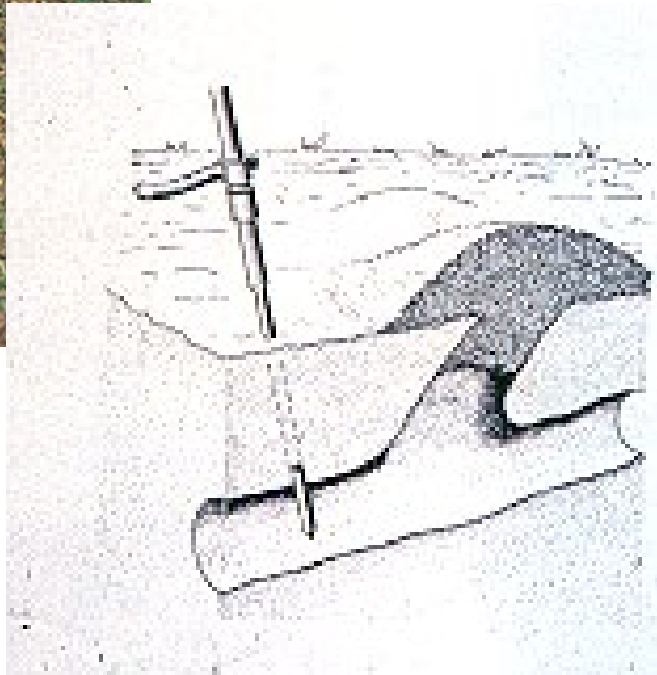


**B**





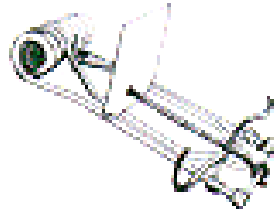






**Macabee Body Gripping Trap**

## WIRE TRAP



1. Locate main runway with shovel or probe.



2. Cut through runway digging away soil sufficiently to allow placing of traps in open ends of runway.



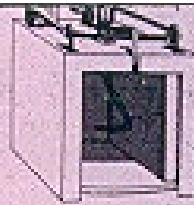
3. Use large spoon to enlarge hole enough to receive traps. Place traps well back in runway and press down firmly.



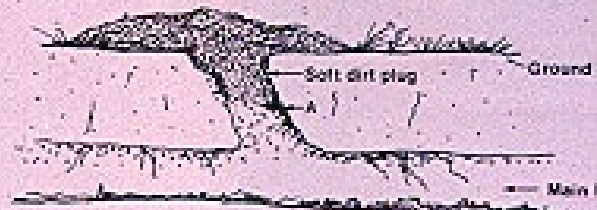


# Gopher box trap

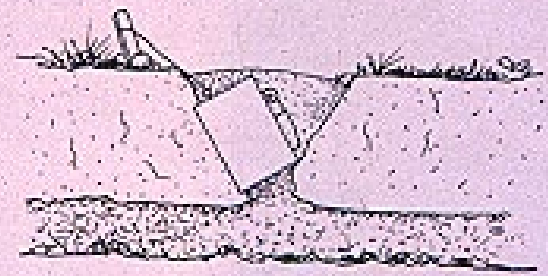




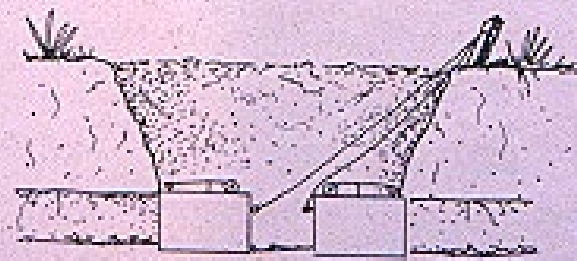
1. Dig out lateral runway to point "A" and clear away soil so trap can be placed as shown below.



2. Set trap in lateral if possible.



3. If unable to set trap in lateral set two traps in-main runway.





**Box Trap**



Cinch Trap





# Fumigants



Gas Cartridges



# Gopher Toxicants

## Non-Anticoagulants

- Strychnine
- Zinc phosphide

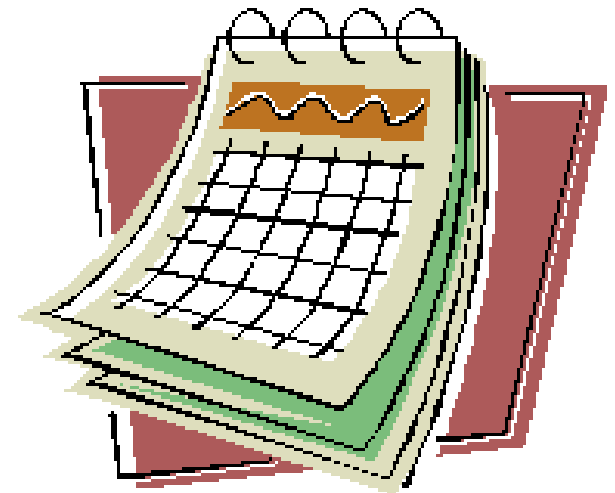
## Anticoagulants

- Chlorophacinone
- Diphacinone



# Timing Gopher Control

- **Fall**
- **When see fresh mounds**



# Ground Squirrels









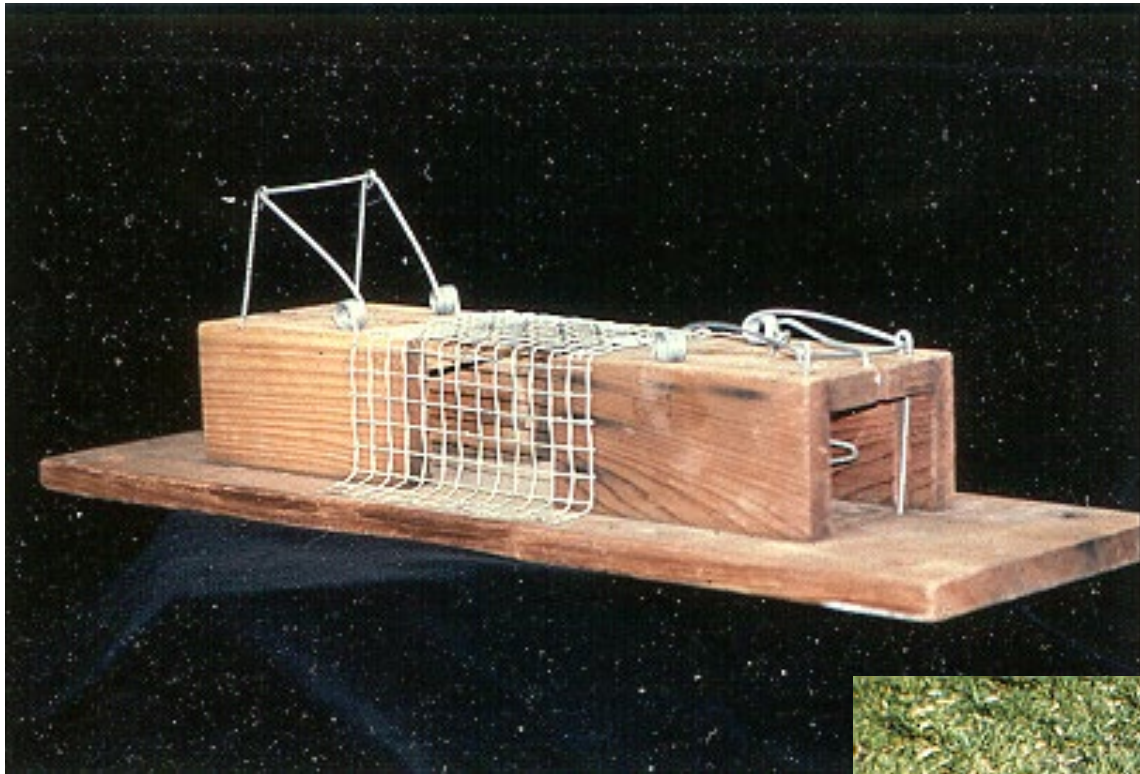
# TRAPPING

- **Humane treatment**
- **Live animals**



# No. 110 Conibear







# **Ground Squirrel Toxicants**

**Zinc Phosphide**

**Chlorophacinone**

**Diphacinone**

# **Non-Target Toxicity**

- **Primary**
- **Secondary**

# Bait Stations



# Timing Ground Squirrel Control

**Spring**

**~ 10 days - 2 weeks**

**after emergence**





# Professional Services



**P-W Manufacturing**

**DK-1 Wire Trap**

**DK-2 Box Trap**

**Ph 918-652-4981**

**USDA Pocatello Supply Depot**

**Gas Cartridges**

**Ph 208-236-6920**