



Native Plants and Local Ecosystems

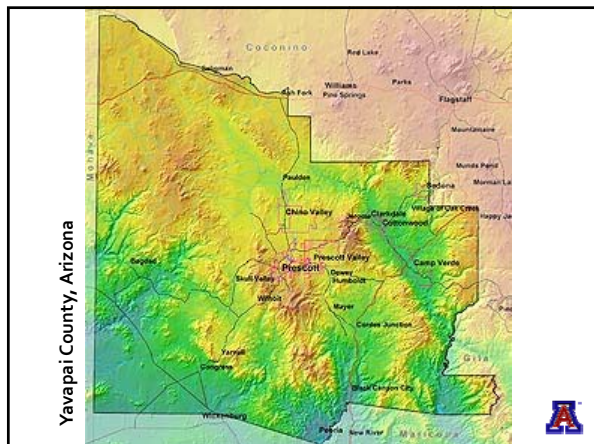
Jeff Schalaus, Agent, Agric. & Nat. Res.
University of Arizona Cooperative Extension, Yavapai County

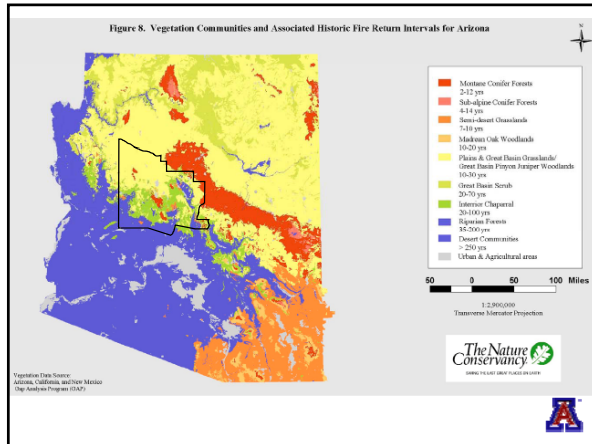


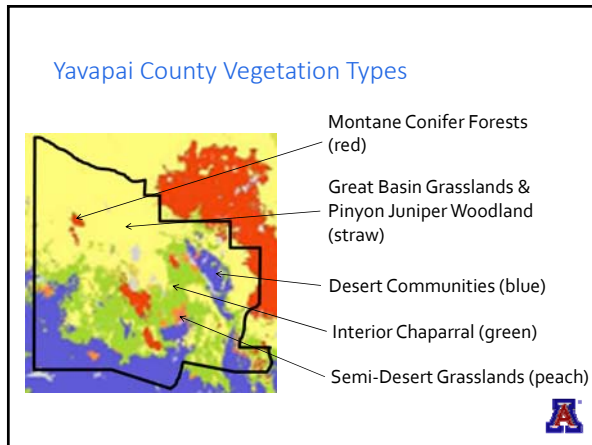
Yavapai County Factoids

- Area is 8,125 mi²
- Elevation ranges from 1,900 to 7,979 ft
- 26% Private
- 38% USFS
- 27% State Lands
- 9% BLM
- 0.5% Native American Reservations
- Population estimate 211,061 (2010)
- Nine incorporated cities/towns



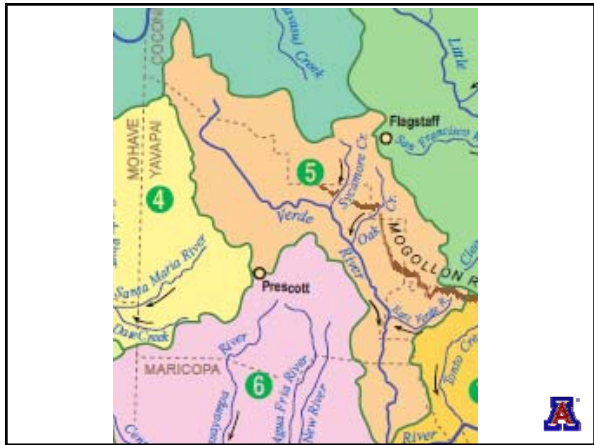


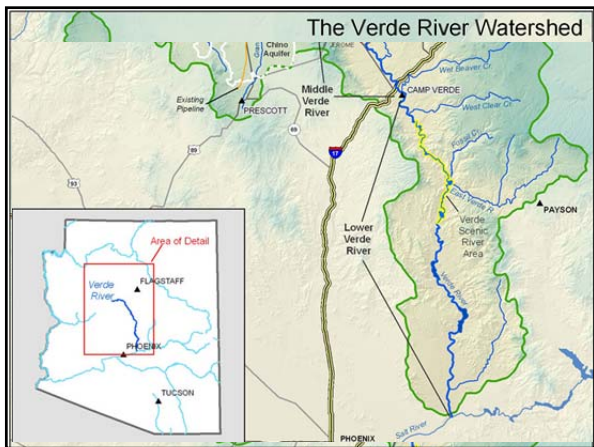












Native Plant Law

- Most cacti and desert legumes are protected
- Threatened and endangered plant species
- See publication: **Arizona Native Plant Law: What You Need to Know** - <https://extension.arizona.edu/sites/extension.arizona.edu/files/pubs/az1506.pdf>



Grasses

- Warm vs. Cool Season
- Sod-forming vs. Bunch
- Native vs. Non-natives
- Forbs have some similarities



Yavapai County Plant Books

- **Arizona Flora** (1960), T.H. Kearny and R.H. Peebles
- **Seed Plants of Northern Arizona** (1973), W.B. McDougall
- **A Field Guide to Plants of Arizona** (1997), A.O. Epple
- **A Field Guide to Southwestern and Texas Wildflowers** (1998), T.F. Niehaus
- **Weeds of the West** (2006), T.D. Whitson



Yavapai County Native Plant Web Resources

- Yavapai County Native & Naturalized Plants
cals.arizona.edu/yavapaiplants/
- Common Plants of the Verde Valley & Sedona
www.naturesongs.com/vvplants/
- USDA Plants Database
plants.usda.gov
- SEINet
swbiodiversity.org/seinet/