



Clothing

Public Domain



Men's Underwear or Drawers

Elastic Replace Tie Strings at
Cuffs in Later 1800s

Three or Four Button Front

Tie String Waist

Men's Under Shirts Similar
with 3 or 4 Button Neck

*Courtesy of the Montana Heritage
Commission, Virginia City,
Montana. Will Abbot Photo.*



Men's Trousers

High Waisted

No Belt Loops

Suspender Buttons

Pocket on Rear

Straight Pockets in Front

Wool Most Popular

Canvas in Southwest

Northern Cowboys Felt Canvas
was for Farmers and Miners

*Courtesy of the Bertrand Museum Exhibit, DeSoto National
Wildlife Refuge, Missouri Valley, Iowa. Will Abbot Photo.*



Courtesy of the Bertrand Museum Exhibit, DeSoto National Wildlife Refuge, Missouri Valley, Iowa. Will Abbot Photo.

Wool Pattern in Trouser from the Bertrand



Trousers Had “Belt”
in Rear

Wool

Garter on Sleeve

Silk or Polished
Cotton Vest

Unique Photo from
the Back

Courtesy of the Range Riders Museum, Miles City, Montana



Courtesy of the Bertrand Museum Exhibit, DeSoto National Wildlife Refuge, Missouri Valley, Iowa. Will Abbot Photo.

Wool Shirt from Bertrand 1865. Pull Over. Partial Buttoned Front. Collarless. Work Shirts had Collars. Better Shirts were Collarless.



Courtesy of the Montana Heritage Commission, Virginia City, Montana. Will Abbot Photo.

Shirts with Matching Detachable Collars.

Complete Button Down Shirts after 1900. Army went to Complete Button Down Shirt in early 1940s.

Courtesy of the Montana Heritage
Commission, Virginia City, Montana. Will Abbot Photo.



V Cut Vest Bottom after 1880. Paper Collars Rolled in Leather Box

*Courtesy of the Montana Heritage
Commission, Virginia City, Montana. Will Abbot Photo.*



Several Collar Designs in
Display Case

Reversible and Disposable

Buttoned in Rear

Collar Stud in Front

*Courtesy of the Gallatin Historical Society
Pioneer Museum, Bozeman, Montana*



Working Men in Emil Ketterer's Bozeman, Montana Blacksmith Shop in the 1870s. Working men in Shirt Sleeves and are Wearing Collared shirts while their Guest is Dressed in a Vest and Coat.

*Courtesy of the Bertrand Museum Exhibit,
DeSoto National Wildlife Refuge, Missouri
Valley, IA. Will Abbot Photo.*



Shoulder Seam Dropped to the Rear on Early Coats

*Courtesy of the Bertrand Museum Exhibit,
DeSoto National Wildlife Refuge, Missouri
Valley, IA. Will Abbot Photo.*



Double Breasted Overcoat

External Pockets

Bertrand 1865

Courtesy of the Montana
Historical Society, Helena, Montana;
(X1960.09.01). Will Abbot Photos.



Buckskin Worn by
those Perpetuating
the Frontier Image

Scout 1875

Not Comfortable in
Hot or Wet Weather



Women's Drawers with Outside Feature



*Courtesy of the Montana Heritage
Commission, Virginia City, Montana. Will Abbot Photos.*





Two Piece Women's Drawer
and Under Corset

Public Domain Image



Women's Union Suit

Sleeveless for Summer

Sleeved for Winter

“Union” of Upper and
Lower Halves

Available in Late 1860s
Onward

*Courtesy of the Montana Heritage
Commission, Virginia City, Montana. Will Abbot Photo.*

Courtesy of the Montana Heritage Commission, Virginia City, Montana. Will Abbot Photo.



Crinoline Period: Clothing
of the 1850-1870

Hoop Skirt

Petticoat

One Worn Under Crinoline

Two to Six Worn Over Crinoline



*Courtesy of the Montana Heritage
Commission, Virginia City, Montana. Will Abbot Photo.*

Corset Worn Over the Under
Corset or Chemise



*Courtesy of the Montana Heritage
Commission, Virginia City, Montana. Will Abbot Photos.*



*Courtesy of the Montana Heritage
Commission, Virginia City, Montana. Will Abbot Photo.*



Over Corset later
called Camisole

*Courtesy of the Montana Historical
Society, Helena, Montana*



1860s Ball Gown Over
Crinoline



1860s Dressing Gown

Later know as Housecoat
or Bathrobe.

*Courtesy of the Montana Heritage
Commission, Virginia City, Montana. Will Abbot Photo.*

1890s Dressing Gown



*Courtesy of the Montana Heritage
Commission, Virginia City, Montana. Will Abbot Photo.*



Woman's Overcoat
from the Bertrand
1865

*Courtesy of the Bertrand Museum Exhibit,
DeSoto National Wildlife Refuge, Missouri Valley,
Iowa. Will Abbot Photo.*

Separate Bodice and
Skirt with Shawl



*Courtesy of the Montana Heritage
Commission, Virginia City, Montana. Will Abbot Photo.*

The Bustle Period: 1870-1890

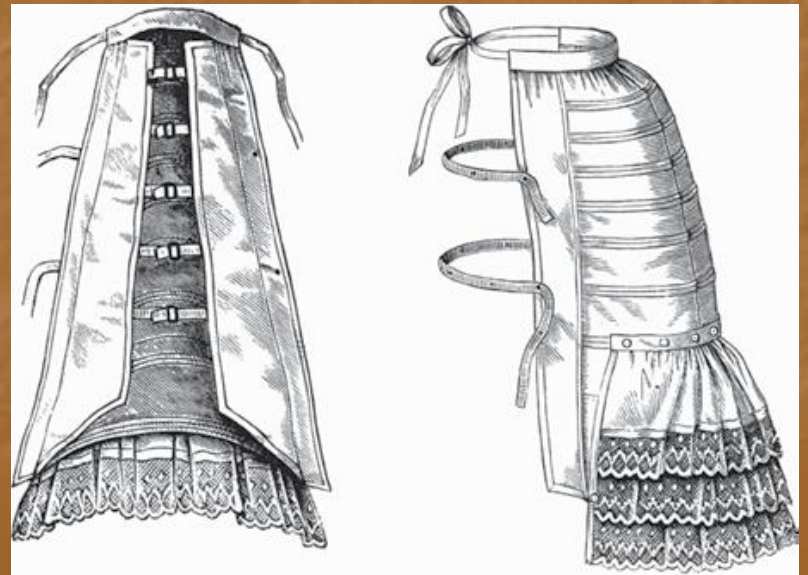
“Bell” Shape Pulled Back to Bustle Shelf

Wedding Dress – Not Always White

Could be used as Formal Dress with Minor Alternations



Courtesy of the Montana Historical Society, Helena, Montana; (X1968.13.02.).



Public domain Image



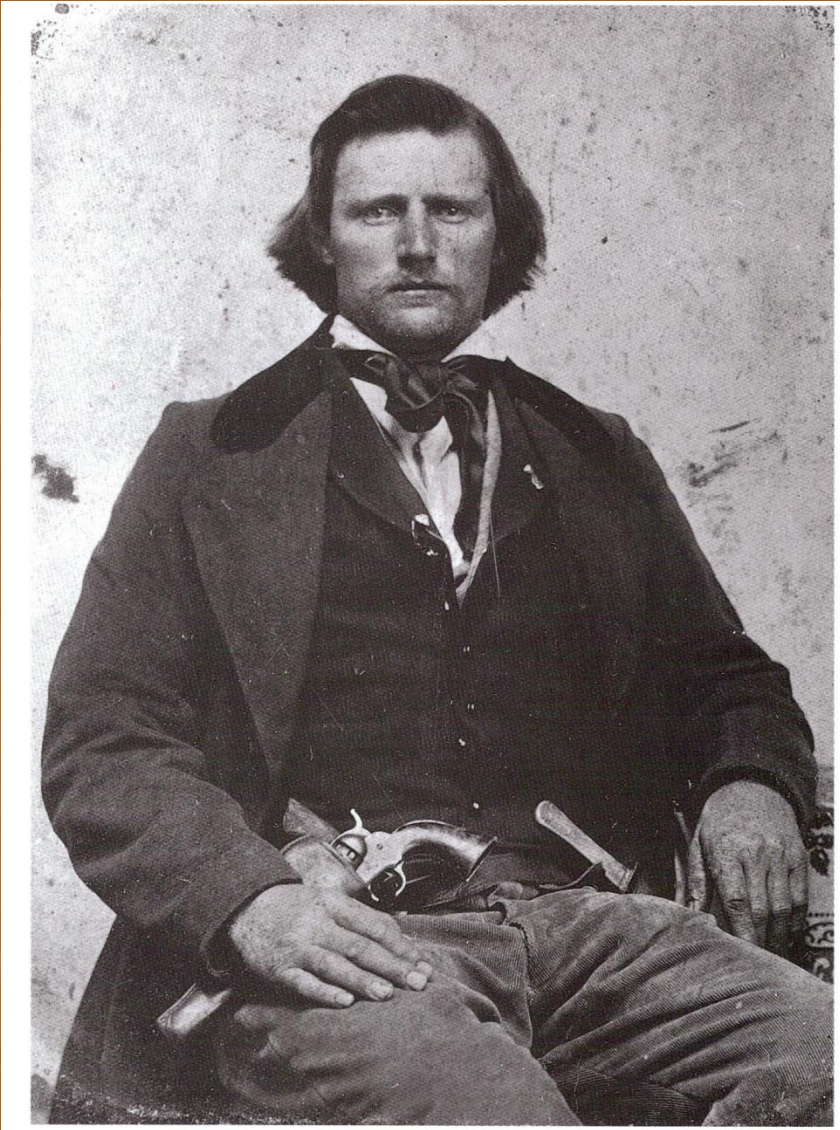
Everyday Work Wear was Heavily Used.

Recycled into Patches or Rags, and Eventually Thrown Away

Everyday Wear Hard to Find

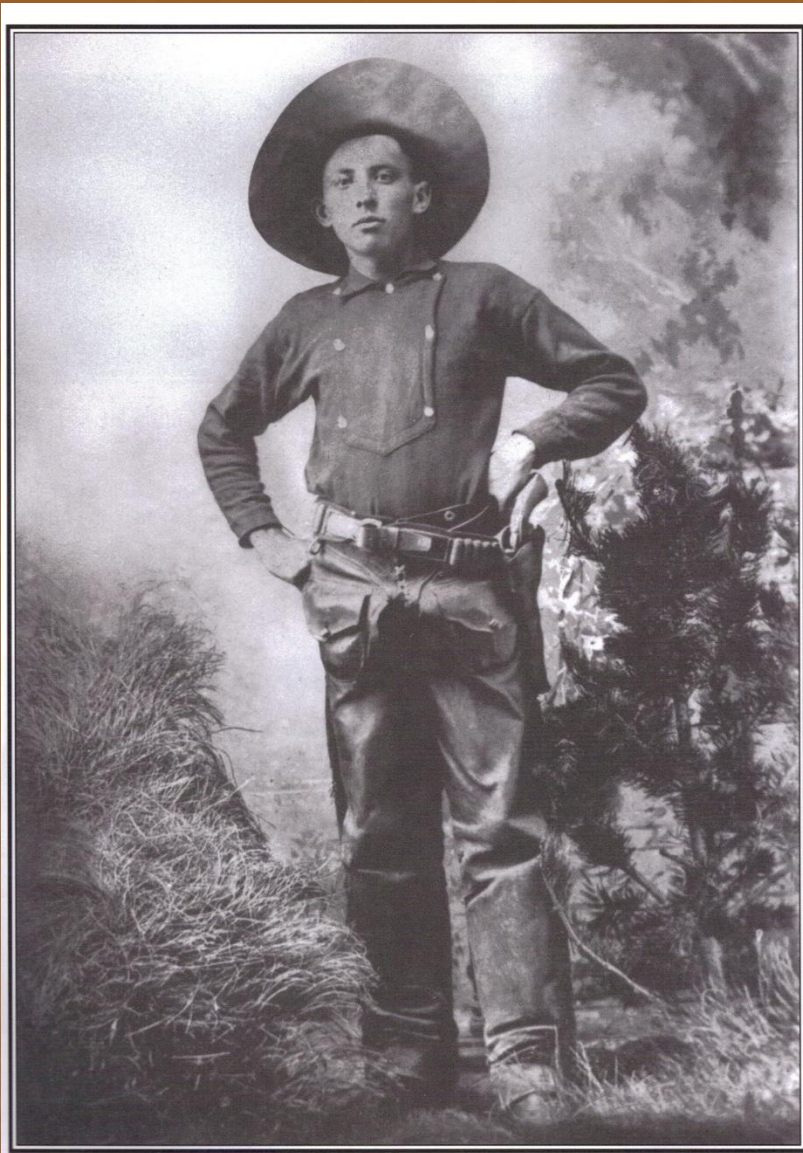
Worn in 1890s by Elizabeth C. Albritten of the Flathead Valley, Montana.

Courtesy of the Montana Historical Society, Helena, Montana; (X1968.13.02.).



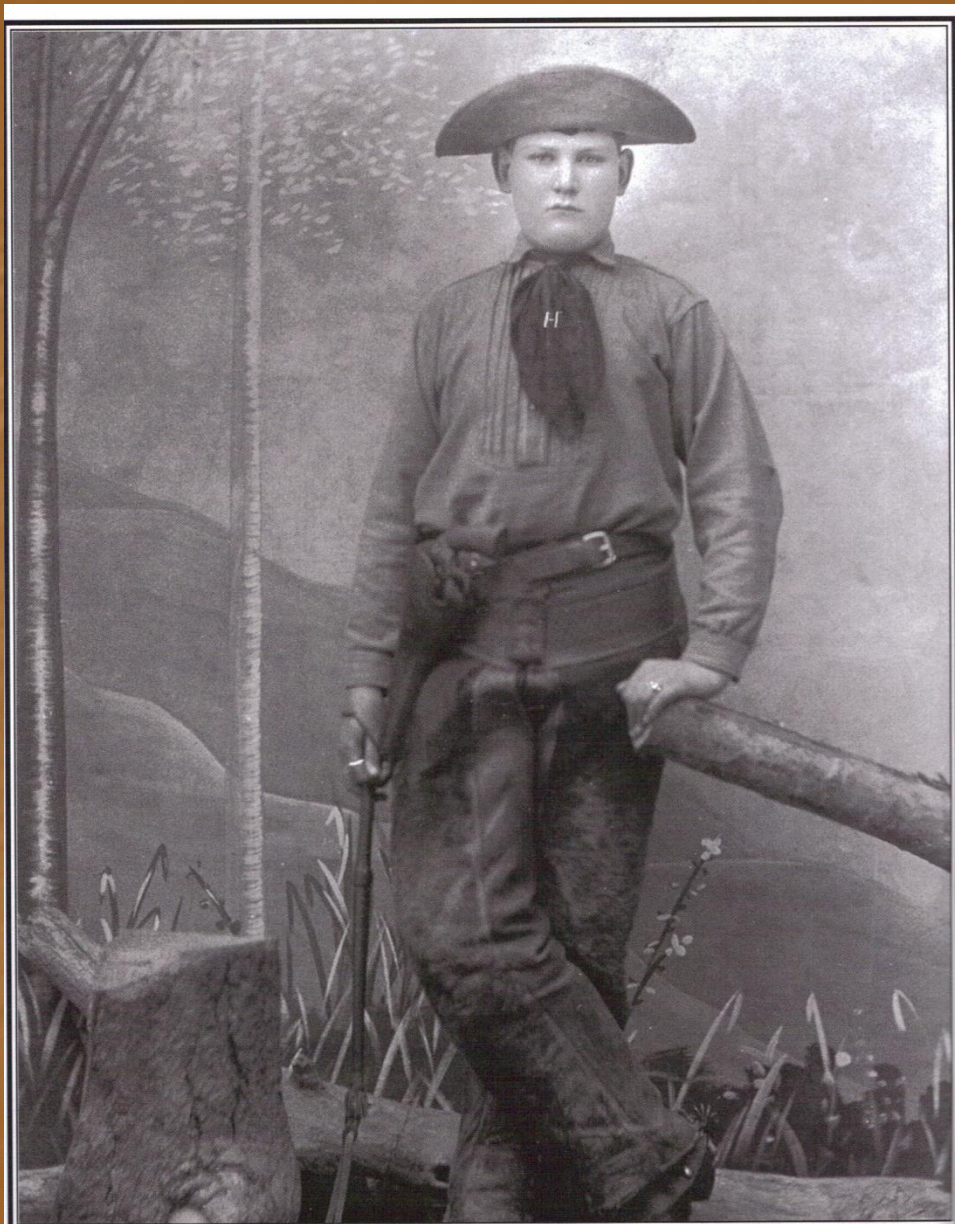
1850s

Public Domain Image



1870s

Private Collection



John Higgins
Missoula
1880s

Private Collection



Public Domain Image

1890s

