



THE UNIVERSITY OF ARIZONA
COLLEGE OF AGRICULTURE & LIFE SCIENCES

Cooperative Extension



CLOVER COMMUNICATOR YAVAPAI COUNTY 4-H NEWS OCTOBER 2019

Prescott Office

840 Rodeo Dr. Bldg. C
Prescott, AZ 86305
Phone: (928) 445-6590
Fax: (928) 445-6593

Camp Verde Office

2830 N. Commonwealth
Drive, Suite 103
Camp Verde, AZ 86322
Phone: (928) 554-8999
Fax: (928) 554-8996

You may view a color copy of this
newsletter online at:

[http://extension.arizona.edu/4-H/
yavapai](http://extension.arizona.edu/4-H/yavapai)

Stacy DeVeau

Stacy DeVeau
4-H/STEM
Program Coordinator, Sr.

Shirley Vasovski

Shirley Vasovski
4-H Club Program Coordinator

Lisa Gerber

Administrative Associate



October 1	4-H year Officially Begins
October 1	No. Az. Rabbit Breeder Assoc. Rabbit Show Entry Deadline
October 4 - 27	Arizona State Fair, Phoenix
October 5	No. Az. Rabbit Breeder Assoc. Fall Kick-Off Rabbit Show Chino Valley
October 5	Livestock Judging Clinic - UA Campus Agriculture Center, Tucson
October 8	Small Ruminant Production and Health Care Class Part 1 Prescott Cooperative Extension Office 5:00 - 8:00 PM
October 9 - 12	Next Level Purebred and Crossbred Pig Show www.showphx.org
October 9 - 20	Tractor Supply Fall Paper Clover Campaign
October 16	Record Book judging Prescott Cooperative Extension Office
October 18	2019 Arizona 4-H Shooting Education Instructor Certification Course application deadline
October 22	Small Ruminant Production and Health Care Class Part 2 Prescott Cooperative Extension Office 5:00 - 8:00 PM
November 1 - 3	AZ Horse Show
November 8	2019 Arizona 4-H Shooting Education Instructor Certification Video Course completion deadline
November 9 - 11	2019 Arizona 4-H Shooting Education Instructor Certification Course - Tucson
November 29 - December 3	National 4-H Congress - Atlanta, Georgia



Issued in furtherance of Cooperative Extension work, acts of May 8 and June 30, 1914, in cooperation with the U.S. Department of Agriculture, Jeffrey C. Silvertooth, Associate Dean & Director, Extension & Economic Development, Division of Agriculture, Life and Veterinary Sciences, and Cooperative Extension, The University of Arizona. The University of Arizona is an equal opportunity, affirmative action institution. The University does not discriminate on the basis of race, color, religion, sex, national origin, age, disability, veteran status, sexual orientation, gender identity, or genetic information in its programs and activities.

IMPORTANT LINKS

County-wide Youth Safety Officer Position:

Are you a teen who is interested in safety? Would you be willing to serve in a leadership role to promote safety education? Opportunities include assisting with horse member safety skill tests, providing ear and eye protection at county-wide events as appropriate, or any place that safety is a concern! We want to hear from you!

For additional information, please call Shirley Vasovski, Program Coordinator
928-445-6590 x 229



The Paper Clover Campaign is Coming October 9 - 20 !!

Each Spring and Fall, Tractor Supply will help raise money for 4-H programs with the Paper Clover Campaign, a national in-store fundraiser that benefits 4-H programming.

Encourage your clubs, county agents and volunteers to participate at their local Tractor Supply Co. store during Paper Clover. Participation can be anything from setting up a display table and project boards inside the store to having clubs encourage customers to donate.



Yavapai County 4-H County-Wide Weaving Fiber Arts Project

WHERE: Shelby Hansen Room

WHEN: Days and Times to be determined

HOW: Register in 4honline with a primary club then select Shamrock Hustlers as a secondary club and choose the Weaving Project



October 1
October 1
October 15
October 18
October 26

Deanna Poppenberger
Audrey Clausen
Michael Vilardi
Cindy Price
Korie Boyes

Lonesome Valley Wranglers
Triangle 4-H
Prescott Valley Clovers
Lonesome Valley Wranglers
Lonesome Valley Wranglers

Toilet Paper Roll Pumpkin



Here is a fast and easy way to make a beautiful arrangement for fall. These toilet paper roll pumpkins are fun to make!

Items needed

15" by 15" square of material (fall colors in both solids and prints work well)

Roll of toilet paper

Piece of batting long enough to go around toilet paper roll

2 brown pipe cleaners

2 green pipe cleaners

1 brown paper lunch sack

Instructions

1. Put batting around toilet paper roll.
2. Lay material wrong side up on work surface.
3. Place roll of toilet paper in center of material.
4. Starting with any corner, pull material up around toilet paper roll and tuck into center of roll.
5. Continue to tuck material into roll until all material is tucked.
6. Fold brown paper lunch sack in half.
7. Roll the lunch sack until it looks like a stem. Tuck it into the roll of toilet paper where you put material.
8. Curl pipe cleaners on a pencil.
9. Tuck pipe cleaners into toilet paper roll around lunch sack so that they look like vines.
10. Make several using different materials and have a pumpkin patch you can admire year round! To make it look more real, place leaves around pumpkin bottoms and tuck one or two into toilet paper roll.



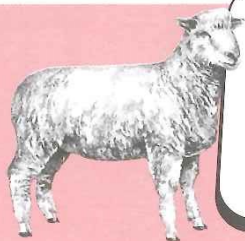
Picture used with permission from:
"The Craft Elf" at <www.craftelf.com>.

Prepared by: Diana Nelson, Before Care Aide, Central-East Elementary School, Logan-Hocking School District.



4-H Cloverbuds
OHIO STATE UNIVERSITY EXTENSION

Making the Right Choice



Sheep Project Skill: Selecting a project lamb
Life Skill: Making decisions
Show of Success: Selects a ewe lamb based on the information provided.

People decide which sheep is best using different reasons. Some prefer cute sheep, some like big sheep, and for others how much a sheep costs is important. To make a good decision you need to know what your goals for your sheep project are. Do you want to produce high quality meat lambs? Then learn how to recognize good meat

animals. Do you want a flock that produces many twins and triplets? Then study twinning records for the parents and grandparents of the animals you are considering. Do you want to make money? Then learn to find good animals at a low price.

Your Challenge

Compare the information and photos for the three lambs below. With your helper, describe a production goal to improve in your flock (meat quality, growth rate, wool, mothering ability) then choose one lamb to buy and tell why.

Which one would you choose?

	Lamb A	Lamb B	Lamb C
Birth date	January 12	January 1	January 15
Price	\$100	\$95	\$85
Frame Size	Medium	Large	Medium
Present health	Excellent	Excellent	Fair
Birth type	Single	Twin	Twin
Dam's lambing percentage	160%	130%	175%
90 Day weaning wt.	67 lbs.	80 lbs.	65 lbs.
Sire's dam's fleece wt.	8 lbs.	9 lbs.	11 lbs.
Sire's muscling	Heavy	Medium	Medium
Sire's frame size	Medium	Large	Medium
Sire's average daily gain	0.65 lbs./day	0.92 lbs./day	0.86 lbs./day
My Sheep Project Goal			
My Choice			
Why?			

Lamb A



92 Days Pre-Fair

Fair

Lamb B



92 Days Pre-Fair

Fair

Lamb C



92 Days Pre-Fair

Fair

Talk It Over

Share with your helper

- Which lamb did you choose?
- Why did you pick that lamb?

Tell what's important

What information was most important in making your decision?

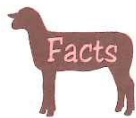
What other information would you like to have had?

Explore what you learned

Why should you gather and compare information before making a decision?

Imagine what's next

What other kinds of decisions do you make where you need to compare several things at once?



Selecting and Feeding a Project Lamb

Making Plans

- Check your fair's ownership requirements first. Most fairs require at least 60 days ownership before the show.
- Research what the weight restrictions will be for your lamb. Many fairs have minimum and/or maximum weight limits for market classes.
- Before you begin looking for market lambs, know what your fair's weight requirements are. Then calculate how much your project lamb should weigh at the time you purchase it. As a rule of thumb, plan for your market lambs to gain about 0.6 lbs per day at the last 60–90 days before the fair. Actual growth rates can range from 0.4 to 1 lb per day depending on lamb genetics and how well they are fed and managed. To decide how much your lambs should weigh when you purchase them, multiply 0.6 lbs per day by the number of days between the date of purchase and the fair. Then subtract that number from the target finished weight you have set for each of the lambs. Remember that sickness, hot and humid weather, stress, and providing too little water, or water that is dirty or very warm will all reduce the amount of feed your lambs will eat—and their



More Challenges

1. Look at a group of ewe lambs about the same age. Gather information and inspect each one. Rank order them and discuss with your helper how important size, apparent health, birth type, body type of sire, fleece weight of dam and price each were in your decision.

2. Attend a sale of project market lambs. See if you can select those that will sell for the best prices. Discuss with your helper what you looked for to make your decisions.