



THE UNIVERSITY OF ARIZONA  
COLLEGE OF AGRICULTURE & LIFE SCIENCES

## Cooperative Extension



### CLOVER COMMUNICATOR YAVAPAI COUNTY 4-H NEWS OCTOBER 2018

#### Prescott Office

840 Rodeo Dr. Bldg. C  
Prescott, AZ 86305  
Phone: (928) 445-6590  
Fax: (928) 445-6593

#### Camp Verde Office

2830 N. Commonwealth  
Drive, Suite 103  
Camp Verde, AZ 86322  
Phone: (928) 554-8999  
Fax: (928) 554-8996

You may view a color copy of this  
newsletter online at:

[http://extension.arizona.edu/4-H/  
yavapai](http://extension.arizona.edu/4-H/yavapai)

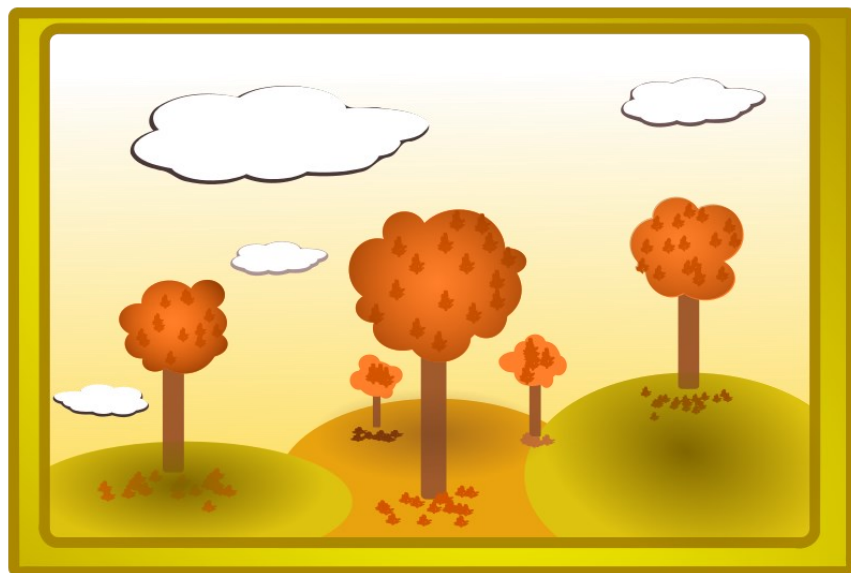
Stacy DeVeau  
4-H/STEM  
Program Coordinator, Sr.

Shirley Vasovski  
4-H Club Program Coordinator

Administrative Associate



October 1	2018/2019 4-H year Officially Begins
October 3 -14	Tractor Supply Paper Clover Campaign
October 6	CRIT Small Stock Show, Parker
October 6 - 7	4-H Alumni Camp, Williams
October 10	Project Record Books Due to Cooperative Extension Office (turn in to your Club Leader)
October 11	EXPO General Meeting 6:00pm Shelby Hansen Room
October 13	Horse Judging Clinic - Phoenix 11:00 am - 4:30 pm
October 14	State Horse Judging Contest, Al-Marah Equine Center Tucson
October 17	Record Book Judging - Prescott Cooperative Extension Office 9:00 am
October 22	4-H Youth in Action Award Application Deadline
October 27	White Mountains Robotic Conference - Lakeside 9:00 am - 2:30 pm
October 31	Club Financial Reporting Due to Cooperative Extension Office
November 2- 4	State 4-H Horse Show (Queen Creek)
November 3	Pima County 4-H Fur & Feathers Small Stock Show, Tucson
November 10	Gila County 4-H Practice Skillathon
January 26 - 27	4-H State Dog Show, Phoenix



Issued in furtherance of Cooperative Extension work, acts of May 8 and June 30, 1914, in cooperation with the U.S. Department of Agriculture, Jeffrey C. Silvertooth, Associate Dean & Director, Extension & Economic Development, Division of Agriculture, Life and Veterinary Sciences, and Cooperative Extension, The University of Arizona. The University of Arizona is an equal opportunity, affirmative action institution. The University does not discriminate on the basis of race, color, religion, sex, national origin, age, disability, veteran status, sexual orientation, gender identity, or genetic information in its programs and activities.

## COMMUNICATIONS CORNER

Did you know.....

### Member in Good Standing Requirements

All 4-H members are required to meet the following minimum standards each year. Each club has the option of adding requirements to this list. If a club does add requirements they must notify their members in writing by the first 4-H meeting of the year. A copy of the club's bylaws must be on record at the Cooperative Extension Office.

1. Adhere to the expectations of the Arizona 4-H Code of Conduct.
2. Attend Community Club Meetings, Project Meetings and/or activities in compliance with Community Club's attendance policy. \*A minimum of 6 meetings must be held per year, per club, per project.  
IE: Community Club must meet at least 6 times. Lamb project meeting must meet at least 6 times.
3. Participate in at least ONE 4-H community service event. \*Please see definitions of community service.
4. Complete a 4-H project doing one's own work with minimal assistance from parents or others.
5. Give a club or county 4-H public presentation for each project enrolled in.
6. Participate in 3 recognized 4-H events throughout the year (local, county, state or national level).  
Examples: livestock judging (local/club level), MoYava 4-H Camp (state level), National 4-H Congress (national level), or 4-H/FFA EXPO or 4-H Horse Show (county level). Club and project meetings are not a part of the 3 recognized events.
7. Complete a 4-H record book and turn it in to your community club leader.



## COMMUNICATIONS CORNER

### The Paper Clover Campaign is Here!!

Each Spring and Fall, Tractor Supply will help raise money for 4-H programs with the Paper Clover Campaign, a national in-store fundraiser that benefits 4-H programming. Encourage your clubs, county agents and volunteers to participate at their local Tractor Supply Co. store during Paper Clover. Not only will this help donations and improve their relationship with their local store, they will also have the opportunity to [enter the Paper Clover Participation Sweepstakes](#), where 75 clubs will win a \$100 TSC gift card. Participation can be anything from setting up a display table and project boards inside the store to having clubs encourage customers to donate.

**October 3—14**



## *Happy Birthday to our 4-H Volunteers!*

October 1	Deanna Poppenberger	Lonesome Valley Wranglers
October 8	Mercedes Ogden	Lonesome Valley Wranglers
October 12	Tracy Haught	Skull Valley Trailblazers
October 15	Mike Vilardi	Prescott Valley Clovers
October 18	Cindy Price	Lonesome Valley Wranglers

**HAPPY  
BIRTHDAY**



# County-wide Shooting Sports Shotgun Program 2018-2019

**We are pleased to be able to offer both a beginning and an intermediate-level shotgun program for youth enrolled in Yavapai County 4-H. The project is open to youth enrolled in any 4-H club within the county.**

### Location/Times:

- All shoots will take place at the Prescott Trap & Skeet Club, 10800 AZ-69, Dewey, AZ
- We plan to shoot two Sunday afternoons each month from Oct-Jun, between 12 noon and 2 p.m.

### Requirements Include:

- Completion of Shotgun Safety Training (will be offered on two dates, must attend one to participate in project)
- 4-H Shooting Sports Programs are open to all youth 9 years of age or older (as of Jan. 1 of the current year). A 4-H Shooting Sports Instructor has the right to refuse any participant from the shooting sports activity in the interest of safety for the participant and others in the program.
- Hearing Protection (for both youth and parent)
- Eye Protection (for youth and parent)
- Parent present at all shoots
- Notebook for tracking learning and progress at all shoots (can be Project Record format)
- Cost for beginners will initially be \$10/range session, increasing to \$13.50 per round beginning around January. Costs reflect actual shotshells and range fees, which may fluctuate during the 4-H year.
- Copy of 4-H Medical Form

### Not Required:

- Your own shotgun, shotshells, or shooting vest
- Attendance at each shoot, although requests for excused absences must be received prior to the shoot
- Membership in the Prescott Trap & Skeet Club

### Absence Policy

- Attendance is not required at each shoot, although requests for excused absences must be received in advance of the shoot.
- Beginning shooters who miss 3 or more shoots in a row may be asked to drop the project and try again the following year, as they may fall behind and be unable to catch up with the rest of the group.
- Any shooter with 3 unexcused absences will be dropped from the project for the remainder of the 4-H year.

### Notes:

- Experienced shooters will need to complete safety training and “try out” before advancing to Intermediate.
- Shotgun shooters will experience recoil, which affects people differently. There are pads on the end of the shotguns and in the shooting vests to help absorb this, but you still may experience some bruising/discomfort, even if you do everything right—but especially if you do not hold the shotgun tightly to your shoulder.

**If you have questions, please contact the 4-H Shotgun Leader:** Auben Winters, email: [aubenwinters@gmail.com](mailto:aubenwinters@gmail.com), cell phone 925/765-5889





# All About Leaves

Let's collect, identify and preserve leaves!

## Materials:













Roll of Wax Paper  
Fresh Fall Leaves  
Plain, Scrap Paper  
Iron for Pressing  
9 x 12" Construction Paper  
Stapler  
Permanent Marker for Labeling Leaves  
Tree Field Guide



## Procedure:

1. Take a nature walk and collect some fall leaves.
2. Using a tree field guide identify each leaf.
3. Press the leaves by layering them between plain paper. Repeat layers until all leaves are placed. Make a paper-and-leaf sandwich and place a heavy book on top. After a couple of days carefully remove the pressed leaves.
4. Cut a piece of waxed paper 2 feet long. Lay out the pressed leaves on the waxed paper in any pattern, but make sure to leave a 1 inch border on the long sides and a 2 inch border at each end.
5. Have an adult help you lay the waxed paper design on an ironing board. Place another layer of waxed paper on top of your design. Working gently and quickly use the iron to press the wax layers together. You will only need a second or two for the wax to adhere.
6. Use the construction paper to make a border around your waxed paper and adhere it using a stapler.
7. Have an adult help hang your artwork in a window!

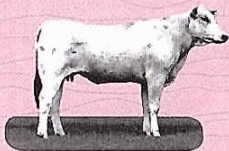
# Leaf Identification Guide

				
Maple	Oak	Birch	Ash	Poplar
				
Black Walnut	Hickory	Sycamore	Basswood	Cottonwood

These are just a few types of leaves, please use a Tree Identification Guide for more information.







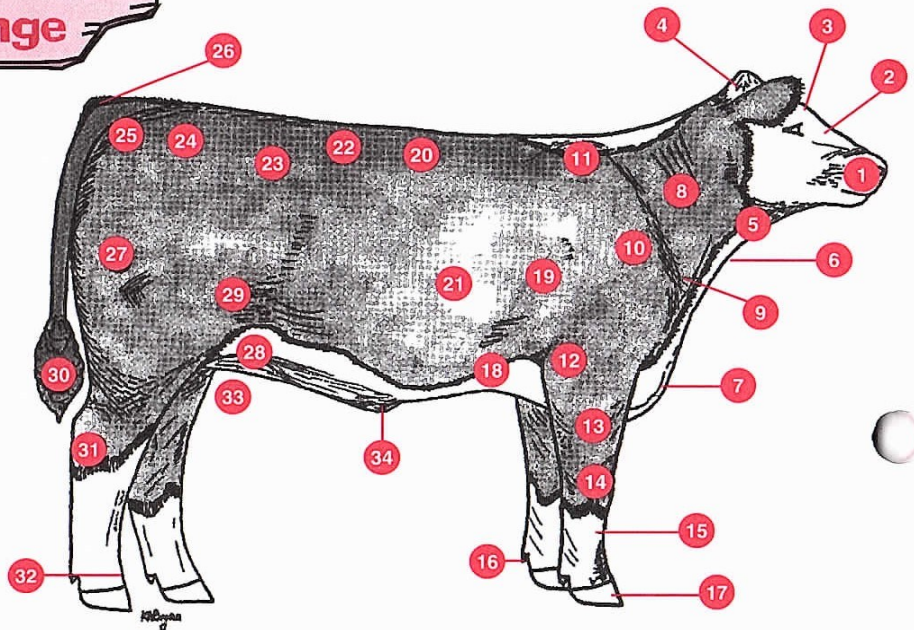
## Locating Beef Parts

**Beef Project Skill:** Selecting beef animals  
**Life Skill:** Communicating with others  
**Education Standard:** NS.K-4.3 Life Science  
**Success Indicator:** Identify 30 beef body parts.

Do you know where the stifle on a beef animal is located? The hock, the poll, the brisket? In order to better understand the beef project and be able to select quality animals you need to know the basic body parts.

### Taking on the Challenge

There are 34 parts numbered on the outline of the beef animal. Identify each part. Many of the parts listed in the Beef Parts Word Bank have hints to help you locate them. Explain the locations of each part to your helper.



### Beef Parts Word Bank

- |   |  |  |
|---|--|--|
| _____ Back (or Top) - Along the top from the point of the shoulders to the last rib | _____ Forerib - Right behind the shoulder                              | _____ Pastern - Joint right above the hoof                         |
| _____ Brisket - Chest of the calf   | _____ Rear Flank - Opposite of fore rib in front of rear leg           | _____ Pin Bone - Bone by tail head                                 |
| _____ Cannon bone - From knee to pastern and from hock to pastern                   | _____ Hindquarter  | _____ Poll - Top point of head                                     |
| _____ Dewclaw - Back of hoof  | _____ Hock - Middle joint of rear leg                                  | _____ Point of Shoulder - Where front legs meet along the top line |
| _____ Dewlap - Flap of skin on the throat   | _____ Hoof   | _____ Ribs   |
| _____ Elbow - Joint of front leg at the fore flank region                           | _____ Hook or Hip Bone - Where line ties into hip                      | _____ Rump - Hip   |
| _____ Face  | _____ Knee - Middle joint of front leg                                 | _____ Shoulder   |
| _____ Forearm - Knee to elbow of front leg  | _____ Loin Muscle - From the last rib to the start of the hip          | _____ Stifle - Muscle at rear flank                                |
| _____ Forehead - Between eyes   | _____ Lower forerib (Heart Girth) - Along belly line behind front legs | _____ Switch - End of tail   |
|   | _____ Muzzle - Nose  | _____ Tailhead - Where tail attaches to calf                       |
|   | _____ Navel - Center of belly  | _____ Throat   |
|   | _____ Neck   | _____ Top of Shoulder  |
|   |  | _____ Udder (female) Cod (steer)                                   |
|   |  | _____ Scrotum (bull) - Between rear legs                           |





## BarnTalk

### Shooting the Breeze

- How did you go about determining which part of the animal went where?

### Show Me the Beef

- Why is it important to know the parts of a beef animal?

### Where's the Beef?

- How will knowing beef parts help you in talking to your vet?

### Beef's Future

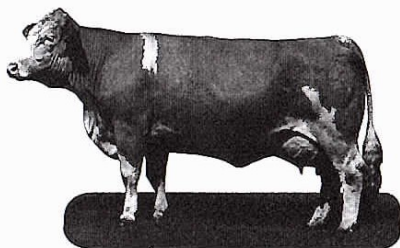
- How will knowing the parts be useful to you as you judge beef?

Beef Project Online



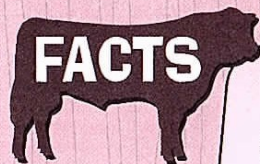
[www.N4HCCS.org/beef](http://www.N4HCCS.org/beef)

Beef Terms



Written by Josh Merrill.

## FACTS



### Breed Word Bank

ANGUS	MURRAY-GREY
BARZONA	NORMANDE
BRAHMAN	PINZGAUER
BRANGUS	RANGER
CHAROLAIS	SALERS
CHIANINA	SCOTCH
DEVON	HIGHLAND
GALLOWAY	SIMMENTAL
GELBVIEH	SHORTHORN
HEREFORD	TARENDAISE
LIMOUSIN	WATUSI
MAINE-ANJOU	

### Breed Word Find

A	B	R	A	N	G	U	S	C	E	H	J	L	S
N	A	N	G	U	S	E	P	A	R	T	E	V	C
B	R	A	H	M	A	N	L	Y	L	S	Z	L	O
M	Z	C	C	B	D	W	G	B	I	E	I	I	T
U	O	K	H	M	O	D	A	A	V	M	R	S	C
R	N	V	A	I	E	W	T	T	O	I	A	S	H
R	A	B	R	V	A	N	C	U	U	E	E	F	H
A	Y	G	O	H	E	N	S	I	J	S	L	H	I
Y	A	N	L	R	M	I	I	S	O	P	I	E	G
G	W	M	A	I	N	E	A	N	J	O	U	R	H
R	O	T	I	R	R	E	G	N	A	R	X	E	L
E	L	Y	S	I	M	M	E	N	T	A	L	F	A
Y	L	Z	A	B	C	E	D	N	A	M	R	O	N
D	A	E	F	P	I	N	Z	G	A	U	E	R	D
S	G	S	H	O	R	T	H	O	R	N	C	D	E



It's never too early to start learning about beef.

1. On your own animal identify 10 parts.

**Beef It Up!**





## SUBMITTING TO CLOVER COMMUNICATOR

To all 4-H club leaders and members

If any clubs, youth, or leaders have any club updates, events, or 4-H stories they would like to share in the Clover Communicator please send them to me by the 25th of every month. We would love to hear what your club is doing in Yavapai County. Pictures are always welcome! In your information, include the 5 W's: Who, What, When, Where, and Why. If you are promoting a 4-H related event, also include contact information or how participants can get involved.

The Clover Communicator is published on the 4-H website AND the Yavapai County 4-H Facebook page. Many people look at the newsletter on the website and FB page to find out what clubs are doing and where they want to join. It's an excellent way to promote your club and members.

Send your information to [lgerber@cals.arizona.edu](mailto:lgerber@cals.arizona.edu) and we'll include it in the Clover Communicator!

### ListServ Reminder: Do Not Delete

The ListServ is used by the Extension office to send out important information to 4-H members and leaders. Please, do not delete anything before reading it if the mail is from the ListServ. We have had many complaints about community members not receiving any information about events, only to find out they never read the ListSers because they do not recognize who it is from. Any ListServ emails are sent

### Newsletter Printed Copy Subscription

All newsletters are emailed and also posted on the Yavapai County 4-H website under the newsletter tab. If you would like to receive a copy of the newsletter mailed to you, the cost is \$21 per year for an annual subscription of 12 issues (which is cost recovery only). Late subscriptions will not be prorated. The subscription year runs from October 1 through September 30.

Make checks payable to University of Arizona and mail to:

University of Arizona Yavapai County Cooperative Extension  
2830 N. Commonwealth Drive #103  
Camp Verde, AZ. 86322

Name \_\_\_\_\_  
Address \_\_\_\_\_  
City, State, Zip Code \_\_\_\_\_

The University of Arizona  
Cooperative Extension, Yavapai County  
840 Rodeo Dr., Bldg. C  
Prescott, AZ 86305

**Return Service Requested**



**We would love to hear from you! Email your club's activities  
to [lgerber@cals.arizona.edu](mailto:lgerber@cals.arizona.edu) or submit by mail to:**

Lisa Gerber, Cooperative Extension, Yavapai County  
2830 N. Commonwealth Dr. Suite 103, Camp Verde, AZ. 86322