



THE UNIVERSITY OF ARIZONA  
COLLEGE OF AGRICULTURE & LIFE SCIENCES

## Cooperative Extension



### CLOVER COMMUNICATOR YAVAPAI COUNTY 4-H NEWS NOVEMBER 2018

#### **Prescott Office**

840 Rodeo Dr. Bldg. C  
Prescott, AZ 86305  
Phone: (928) 445-6590  
Fax: (928) 445-6593

#### **Camp Verde Office**

2830 N. Commonwealth  
Drive, Suite 103  
Camp Verde, AZ 86322  
Phone: (928) 554-8999  
Fax: (928) 554-8996

You may view a color copy of this  
newsletter online at:

[http://extension.arizona.edu/4-H/  
yavapai](http://extension.arizona.edu/4-H/yavapai)

Stacy DeVeau  
4-H/STEM  
Program Coordinator, Sr.

Shirley Vasovski  
4-H Club Program Coordinator

Administrative Associate



November 2- 4	State 4-H Horse Show (Queen Creek)
November 3	Pima County 4-H Fur & Feathers Small Stock Show, Tucson
November 8	Horse Committee Meeting, 6pm Shelby Hansen Room Prescott
November 9-11	Shooting Sports Instructor Certification Course, Tucson
November 10	Gila County 4-H Livestock Skillathon Contest
November 12	Extension Office Closed - Veteran's Day
November 15	Deadline to enroll in 4Honline to show any market animal in EXPO
November 22-23	Extension Office Closed - Thanksgiving Holiday
November 23-27	National 4-H Congress, Atlanta Georgia
November 26	EXPO Meeting, 6pm Shelby Hansen Room Prescott
December 24-31	Extension Office Closed - University Closure
December 26 - Jan 1	Arizona National Livestock Show
January 1	Extension Office Closed - New Year's Day
January 15	Deadline for 4Honline enrollment for breeding animals, dog and indoor exhibits (only exception transfer, new clubs & Cloverbuds)
January 19 - 20	29th Annual Colorado River 4-H Small Stock Show - Verde Valley Fairgrounds, Cottonwood
January 19 -20	Next Level Show Pig Camp, Buckeye
January 26 - 27	4-H State Dog Show, Phoenix



Issued in furtherance of Cooperative Extension work, acts of May 8 and June 30, 1914, in cooperation with the U.S. Department of Agriculture, Jeffrey C. Silvertooth, Associate Dean & Director, Extension & Economic Development, Division of Agriculture, Life and Veterinary Sciences, and Cooperative Extension, The University of Arizona. The University of Arizona is an equal opportunity, affirmative action institution. The University does not discriminate on the basis of race, color, religion, sex, national origin, age, disability, veteran status, sexual orientation, gender identity, or genetic information in its programs and activities.

# PRINCIPLES OF 4-H RELATIONSHIPS

Focus on the mission, not positions.

Separate people from the problem. Assume benevolence.

Be soft on people, hard on problems.

Reason, and be open to reason.

Practice honesty.

Strive for consensus, but accept differences. We might have to agree to disagree.

Respect the value of each person. Every one of us is a valuable resource.

Listen and encourage sharing. Support and encourage others.

Address your concerns to the person who can do something about them.

Honor the need for confidentiality.

Have fun and seek out opportunities to celebrate.

Avoid "parking lot" agendas. If it pertains to our work together, discuss it here, not "outside."

Encourage resolution of conflict.

Collectively own the outcomes. We all share responsibility for where we are going as well as share responsibility to do the work to get there.

There are no stupid questions. When in doubt, ask!

Respect personal space.

Think positive. Beware of Red Flags-

"we tried that once before"

"that will never work"

"we've never done it that way before"

"they won't let us"

---

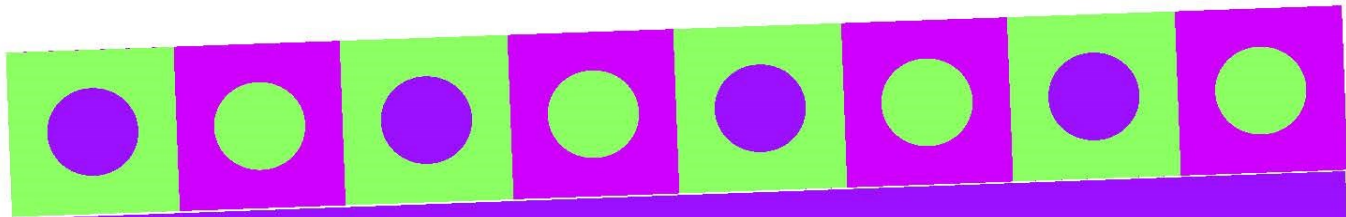
*Happy Birthday to our 4-H Volunteers!*

Cathy Kamper

November 19

Lonesome Valley Wranglers

**HAPPY  
BIRTHDAY**



## MY CLOTHING AND THE WEATHER MEETING ACTIVITY #2 - Refer to Page 10

### Experiment #1

- Put one thermometer under a light colored hat or piece of clothing and another thermometer under a dark colored hat or piece of clothing.
- Wait 15 minutes.
- Check to see if there has been an increase in the temperature.

### Experiment #2

- Lay a large piece of plastic outside with an assortment of clothes made of different fabrics (windbreaker or coated rain coat, 100 % cotton t-shirt, and fabric treated with a liquid repellent such as Scotchgard).
- Have the children carefully sprinkle each of the clothes with the water. Tell them to watch to see the difference in the amount of water that is absorbed.
- Discuss how the fabrics that absorbed the water are best to wear when you might get hot and sweaty, while the ones that do not absorb water would be better to wear in the rain or cooler weather.

### TALK ABOUTS

Read "Moley Gets Dressed for all Weather" by Sue Hendra or "Froggy gets Dressed" by Jonathon London

- Why is clothing useful?
- What are other ways we can protect ourselves from the weather?

### Weather/Clothing Poster

- Draw symbols in each corner of the four sections of your posterboard to represent the different types of weather (sunny and warm, rainy, snowy and cold, and windy).
- Place an assortment of pre-cut pictures in a box or bag from magazines or catalogs.
- Have the children take turns pasting the pictures onto the section of the posterboard that corresponds to the weather that's appropriate for the clothing.

### Costume Relay Game

- Divide the children into two teams.
- Pick a starting line for the teams to stand behind. Put the bags or suitcases of clothes 20 feet away. Make sure each bag or suitcase contains the same number and types of clothes and the clothing is in the sizes large enough to be put on by all the children.
- At the "On your mark, get set, GO!", one member of each team should run to the team's bag or suitcase and put on the clothes as quickly as he/she can, then take off the clothes and put them back in the bag and run back to the starting line.

### Make Sun Visors or Decorate Caps

### Decorate Flip Flops with Fabric Strips



## Chapter 1 - Discovering Horses

# PIECES AND PARTS

Have you ever not understood what others were saying to you? If you don't know the names of common horse body parts, it will be difficult for you to learn how to saddle a horse or understand what others are talking about when it comes to horses. In this activity, you'll have fun while using a game to learn the names of common horse body parts.

**Horse Project Skill:** Judging horses

**Life Skill:** Communications

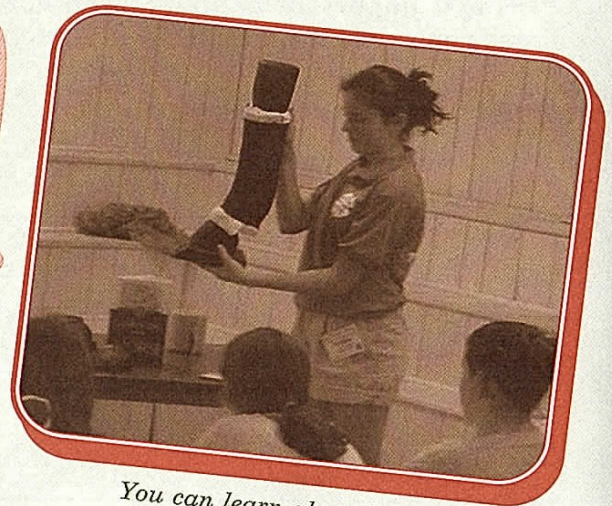
**Educational Standard:** NS.5-8.3 Life science - structure and function in living systems

**Success Indicator:** Identify parts of a horse



Have an adult or older youth help you with this activity. Make or get a large horse parts diagram or chart. Make a plain full-size outline of a horse on a large piece of paper by tracing over the horse diagram. Tape the outline to a wooden

wall. Keep the horse parts chart nearby for reference. Call your friends who like horses and invite them to play this game. Obtain a dart set or rubber dart set. Take turns shooting the darts at the horse outline on the wall. If your dart hits the outline, you must name the part the dart hits. If you cannot name it, let someone else try. Make sure everyone stands behind the person who is throwing. Give the thrower only one dart at a time and let only one person go at a time. After everyone has taken turns and you have identified all of the horse parts on the chart, treat them to a horse-shaped cake and ask everyone to identify the parts they are eating!



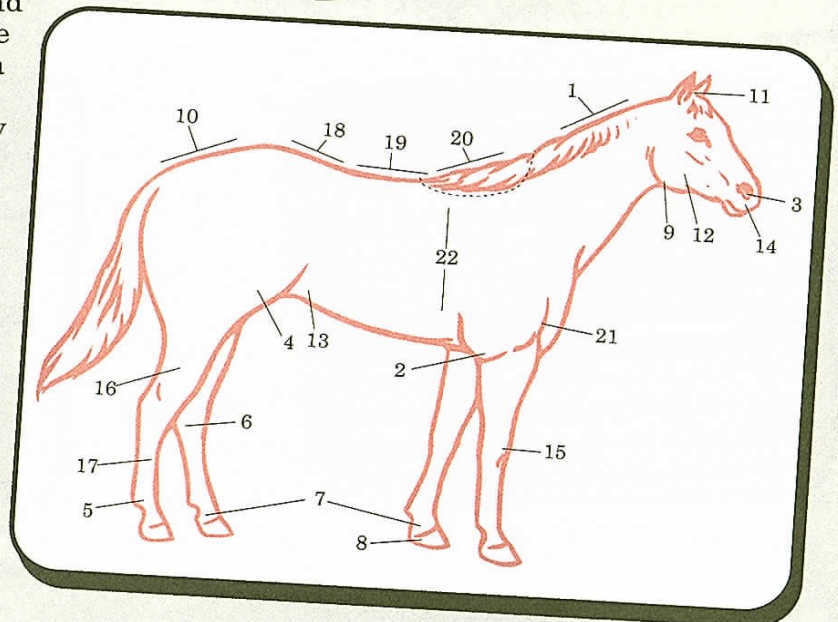
*You can learn about horse parts by using a model.*

*New parts I learned today*

*Parts I still need to learn*

### Horse Parts

Arm	Croup	Hoof	Poll
Back	Elbow	Knee	Stifle
Barrel	Fetlock	Loin	Throat latch
Cannon	Flank	Muzzle	Withers
Cheek	Gaskin	Nostril	
Crest	Hock	Pastern	





## STABLE TALK

### HORSIN' AROUND

What new horse parts did you learn?

### BITS & PIECES

Why is it important to know what horse body parts are called?

---

---

---

### HORSEPOWER

How you like to learn new things?

---

---

---

### GALLOPING AHEAD

List three other ways you can learn horse parts besides playing a game.

---

---

---



## Put the Pieces Together

One of the first things you need to learn about horses is how to describe horse body parts. You will not be able to saddle a horse properly if you do not know the names of the parts used as landmarks to help you. You will not be able to tell your veterinarian about a problem with a horse if you can not describe where the problem is on the horse. Learning the names of horse parts is a basic skill you need and will use every day in the horse project. Don't worry if it takes a little while to learn all of the names for horse parts.



## SPUR YOU ON

1. Create a horse parts chart and display it at your county fair, school science fair, or other event.
2. Using washable paint, paint the names of horse parts on a real horse and use it to teach other youth. Use a gentle horse and make sure an adult helps you. Do not get paint near the horse's eyes and paint only safe areas of the horse. Suggested parts: shoulder, withers, barrel, flank, elbow, neck, forearm, knee, chest, back. Avoid: tail, hock, rump, dock, gaskin.

3. Using a blank outline of a horse, label as many parts as you can from memory. Try again every few days until you can label the whole horse.
4. Pretend you are describing a horse for someone who can't see using an audio or video recorder. Describe in word pictures the horse and its parts from nose to tail and record it. Make sure you include what each part does and why it is important. Listen to your recording and discuss your word pictures with your project helper.

Originally published as "Horse Body Shop."  
Adapted by Susan Kerr.  
Photo courtesy of the University of Maryland 4-H.

Horse Talk  
Stifle

## Equine Extra

The horse's knee is like a human wrist. It is called a stifle.



## SUBMITTING TO CLOVER COMMUNICATOR

To all 4-H club leaders and members

If any clubs, youth, or leaders have any club updates, events, or 4-H stories they would like to share in the Clover Communicator please send them to me by the 25th of every month. We would love to hear what your club is doing in Yavapai County. Pictures are always welcome! In your information, include the 5 W's: Who, What, When, Where, and Why. If you are promoting a 4-H related event, also include contact information or how participants can get involved.

The Clover Communicator is published on the 4-H website AND the Yavapai County 4-H Facebook page. Many people look at the newsletter on the website and FB page to find out what clubs are doing and where they want to join. It's an excellent way to promote your club and members.

Send your information to [lgerber@cals.arizona.edu](mailto:lgerber@cals.arizona.edu) and we'll include it in the Clover Communicator!

### ListServ Reminder: Do Not Delete

The ListServ is used by the Extension office to send out important information to 4-H members and leaders. Please, do not delete anything before reading it if the mail is from the ListServ. We have had many complaints about community members not receiving any information about events, only to find out they never read the ListSers because they do not recognize who it is from. Any ListServ emails are sent

### Newsletter Printed Copy Subscription

All newsletters are emailed and also posted on the Yavapai County 4-H website under the newsletter tab. If you would like to receive a copy of the newsletter mailed to you, the cost is \$21 per year for an annual subscription of 12 issues (which is cost recovery only). Late subscriptions will not be prorated. The subscription year runs from October 1 through September 30.

Make checks payable to University of Arizona and mail to:

University of Arizona Yavapai County Cooperative Extension  
2830 N. Commonwealth Drive #103  
Camp Verde, AZ. 86322

Name \_\_\_\_\_  
Address \_\_\_\_\_  
City, State, Zip Code \_\_\_\_\_

The University of Arizona  
Cooperative Extension, Yavapai County  
840 Rodeo Dr., Bldg. C  
Prescott, AZ 86305

**Return Service Requested**



**We would love to hear from you! Email your club's activities  
to [lgerber@cals.arizona.edu](mailto:lgerber@cals.arizona.edu) or submit by mail to:**

Lisa Gerber, Cooperative Extension, Yavapai County  
2830 N. Commonwealth Dr. Suite 103, Camp Verde, AZ. 86322