



THE UNIVERSITY OF ARIZONA  
COLLEGE OF AGRICULTURE & LIFE SCIENCES

# Cooperative Extension



## CLOVER COMMUNICATOR YAVAPAI COUNTY 4-H NEWS DECEMBER 2019

### Prescott Office

840 Rodeo Dr. Bldg. C  
Prescott, AZ 86305  
Phone: (928) 445-6590  
Fax: (928) 445-6593

### Camp Verde Office

2830 N. Commonwealth  
Drive, Suite 103  
Camp Verde, AZ 86322  
Phone: (928) 554-8999  
Fax: (928) 554-8996

You may view a color copy of this  
newsletter online at:

[http://extension.arizona.edu/4-H/  
yavapai](http://extension.arizona.edu/4-H/yavapai)

Stacy DeVeau  
4-H/STEM  
Program Coordinator, Sr.

Shirley Vasovski  
4-H Club Program Coordinator

Administrative Associate



December 10	Arizona National Livestock Skill-A-Thon and Arizona Creed Contest Entry Deadline
December 24 - January 2	Cooperative Extension Office Closed
December 27 - 31	Arizona Nationals - Maricopa Fair Grounds, Phoenix
December 28	Livestock Judging for Arizona National Livestock Show Entry Deadline
December 28	Arizona National Skill-A-Thon - Maricopa Fair Grounds, Phoenix
December 30	Livestock Judging for Arizona National Livestock Show and Arizona Creed Contest - Maricopa Fairgrounds, Phoenix
January 6	EXPO Online Entries Due by Midnight for Market Swine, Sheep and Goat
January 11	Market Tagging - Market Swine, Sheep, Goat and Small Stock
January 11	Statewide Market Lamb and Meat Goat Rookie Camp - Waddell, AZ
January 14	EXPO Meeting, 6:00 PM - Shelby Hansen Room
January 18 - 19	Colorado River Small Stock Show - Parker
January 25 - 26	Next Level Livestock Camp - Show Pig Camp - Buckeye
February 1- 2	Archery Family Fun Shoot & Campout - Gardner Canyon, Coronado National Forest
February 8	2020 Arizona 4-H State Dog Show, Tucson
February 10	Online Entry Deadline for EXPO Indoor, Dog, Dairy & Breeding
February 11	EXPO Meeting, 6:00 PM - Shelby Hansen Room
February 17	2020 Arizona 4-H Youth Foundation Scholarship Application Deadline to state Foundation Office
February 8 - 9	Next Level Livestock Camp - Show Goat Camp - Buckeye



Issued in furtherance of Cooperative Extension work, acts of May 8 and June 30, 1914, in cooperation with the U.S. Department of Agriculture, Jeffrey C. Silvertooth, Associate Dean & Director, Extension & Economic Development, Division of Agriculture, Life and Veterinary Sciences, and Cooperative Extension, The University of Arizona. The University of Arizona is an equal opportunity, affirmative action institution. The University does not discriminate on the basis of race, color, religion, sex, national origin, age, disability, veteran status, sexual orientation, gender identity, or genetic information in its programs and activities.

## IMPORTANT LINKS



Lonnie Ferguson  
Maggie Reynolds

December 13  
December 16

Camp Verde Cowboys  
Lonesome Valley Wranglers

## Colorado River Small Stock Show

**A Statewide 4-H Small Stock Show Sponsored by La Paz, Mohave & Yavapai Counties**

**Dates:** Saturday & Sunday, January 18 & 19, 2020

**Registration open:** Sat. 8AM - 10:30AM

**Location:** Parker

This will be a carrying case show, open to all 4-H members who will be age 8 - 18 by January 1, 2020, and are enrolled in Rabbit, Poultry, Pigeon and Cavy. All animals must be tattooed, tagged or banded.

[Click here for Entry Forms and additional information](#)

**SHOWMANSHIP CONTEST** in Rabbits, Poultry, Pigeon and Cavy for Sr., Jr. members. Arizona 4-H Showmanship standards will be used. A Round-Robin Championship will be held following the contest. Required attire for both days (4-H Showmanship Dress; long sleeved buttoned shirt, closed toed shoes, clean and presentable, club / vests are acceptable)

**BREED SHOW** ARBA Judges (Rabbit & Cavy) Best of Variety, Blue, Red, and White Ribbons to be awarded. Best of Breed / Best Opposite Sex Rosettes to :top 15 breeds of Rabbits :top 12 classes of Poultry/ Waterfowl :top 5 breeds of Pigeon: top 6 Breeds of Cavy. Animals may be shown by the 4-H owner or a 4-H assistant in conformation classes.

**JUDGING CONTEST** in Rabbit, Poultry, Waterfowl, Pigeon and Cavy; awards to top placing, Jr., and Sr. individuals. Quizzes derived from Arizona 4-H accepted curriculum.

**QUIZ BOWL.** County or club teams contest of knowledge. Teams will consist of four (4) members. Separate contests for Rabbit, Poultry, Pigeon and Cavy. Round Robin Quiz Bowl contest will follow. Questions will be taken from Arizona 4-H accepted curriculum, ARBA, APA Standard Books, ARBA Guide book. Members may be on one team only.

**ENTRIES:** Mail to:  
MOHAVE COUNTY COOPERATIVE EXTENSION  
Attn: COLORADO RIVER 4-H SMALL STOCK SHOW  
101 E. Beale St. Ste A Kingman, Arizona 86401-5827  
PHONE: (928) 445-6590 Yavapai

**ENTRY FEE:** \$3.00 per animal (Advanced entries are encouraged) Prior to January 1. \$5.00 per animal if Postmarked between January 1 and January 10th. \$6.00 DAY OF SHOW & postmarked after January 10. An animal entry will also enter you in showmanship & judging for that project. If entering Showmanship or Judging Contest ONLY, \$3.00 per project (advanced) \$5.00, and \$6.00 Day of Show.

**SALE OR TRADE:** Bring your extra stock and/or equipment to sell or trade. ( Limited to Exhibitors Only ) \*  
**RAFFLES:** Will be held to defray part of the show costs. Each club is asked to donate one or more raffle items. No live animals, please.

## Save the date

### 2020 Arizona 4-H State Dog Show

February 8, 2020

Hosted by Pima and Gila County  
UA Cooperative Extension



University of Arizona Campus Agricultural Center

4101 N Campbell Ave, Tucson, AZ 85719

Show begins at 8:30 a.m.

Setup and Registration at 7:30 a.m.

---

***Proof of Current Vaccinations Required Prior to Attending Show  
(Rabies, DHPP, & Bordetella)***

*Registration Details & Accommodations Coming Soon*

---

#### Tentatively Scheduled Events:

Obedience \* Showmanship \* Rally \* Agility

\*Quiz Bowl \* Dogology \* Costume Contest

Concessions All Day

Dinner on Saturday 2/8/20 (after event)

Questions: Renee Carstens [rcarstens@email.arizona.edu](mailto:rcarstens@email.arizona.edu) 928-978-8511

Ashley Jeffers-Samples [ajefferssample@email.arizona.edu](mailto:ajefferssample@email.arizona.edu) 928-205-3978



# Giving, Spending, Saving



### Teaching Activity

- \$ Collect three matching containers for each child or ask them to bring them from home. These can be margarine tubs, coffee cans with plastic lids, small boxes, or something similar. Even a zip closing plastic bag will work.
- \$ Provide old magazines and scissors or use stickers, colorful markers, and crayons to decorate each container.
- \$ Help them label one container with “SAVE,” one with “SPEND” and one with “GIVE.”
- \$ Ask them to add their name to each container.
- \$ Allow them to take these containers home. Give each member a note for the parents to explain what you have been discussing.
- \$ Encourage them to talk with their parents about how they obtain money and how they will divide it to put some in each container.
- \$ After two months, ask members to report at your 4-H club meeting how they are using these containers.



### Note for 4-H Cloverbud parents:

Dear 4-H Cloverbud parent:

As part of our 4-H meetings, we have been talking about money. We focused on the importance of “giving, spending, and saving.” The containers your Cloverbud has with them today were made so they could practice what we have discussed. I encourage you to talk with your child about what they learned and how they can put these principles into practice. We will ask them to tell us what they are doing at a future meeting. Seeing a parent practice these three principles is a great way for them to learn money management skills. If you have any questions, please let me know. Thanks, as always, for helping us extend our 4-H club lessons into daily life activities.

### Helping Others

Work with your 4-H group to plan a field trip to a place where you can give of your time or money.

- \* Think about possible places to visit. Ask an older 4-H member to list them on a paper for everyone to see, then agree on one.

#### *Possibilities:*

- ⇒ Ronald McDonald House
- ⇒ A food pantry at a church or public building
- ⇒ Goodwill or Salvation Army store

- \* Talk about ways your group could earn money to share with this program. If raising money isn't possible, come up with other ways to help (such as collecting school supplies, food or clothing). Conduct your activity.
- \* If possible, actually visit the location to deliver the money or other items. Or invite someone from the facility to come talk with your 4-H group.



*Submitted: Christine F. Olinsky, FCS Educator,  
OSU Extension, Montgomery County, Ohio.*



# 4-H Cloverbuds

---

OHIO STATE UNIVERSITY EXTENSION





## Know Your Beef



# Identifying Beef Breeds

<b>Beef Project Skill:</b>	Showing beef cattle
<b>Life Skill:</b>	Making decisions
<b>Education Standard:</b>	NS.K-4.3 Life Science
<b>Success Indicator:</b>	Identify fifteen breeds of beef cattle.

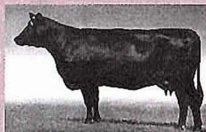
## Taking on the Challenge

How many beef breeds do you know? More than 50 beef breeds are raised in the United States today. Each breed has strong and weak points. Some breeds grow more quickly than others. Some breeds are large, while others are smaller framed. You'll want to know the traits of many breeds and your farm's needs before selecting a breed to raise. When you have completed each of these activities and discussed the questions in Barn Talk with your helper you will be able to recognize these breeds and know something about them.

From the breeds listed in Facts on pages 7 and 9, match each breed to its description. Then complete the Word Find. When you have completed these activities, and discussed the questions in Barn Talk with your helper you will be able to recognize these breeds and know something about them.

## Beef Descriptions

**A.** Solid black polled breed that originated in Scotland. They are the most numerous cattle in the U.S. and are noted for high quality carcasses.



**B.** White faced, red cattle have horned blood lines and polled bloodlines. They are known for their mothering and foraging ability plus their very docile disposition. Horned and polled bloodlines are under one breed association. They are the second most numerous breed in the U.S.



**C.** Originally called Durhams, this British breed can be red, white or roan in color. They were used for milk production.



*Photo courtesy American Shorthorn Association*

**D.** Large framed, red and white in color from France. This is the largest French breed of cattle. Originated from breeders in the Maine and Anjou river valleys.

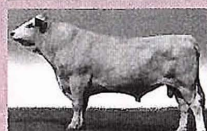


*Photo courtesy Milne-Anjou Association*

**E.** Large muscled, red to gold breed from the French regions of Limousin and Marche.



**F.** Large frame, solid white breed from France. They are known for their fast growth rates.



**G.** White faced, red or yellow breed from the Simme Valley in Switzerland. Noted for good milk production. American versions are black or red with a blazed face.



**H.** Developed at the King Ranch in Texas. A cross of Shorthorn and Brahman breeds. Dark red, slicked haired and loose hide.



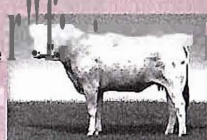
**I.** Cherry red in color from Salers Valley in south central France.



**J.** Originated in Germany. Selected for meat, milk and work.



**K.** Developed as a draft animal the most important traits are extreme size and strength. They are the largest cattle in the world. The American version is usually black with lots of style.



**L.** Developed in a cold, rocky, harsh environment this breed's most important traits are small frame size, calving ease and cold weather tolerance.



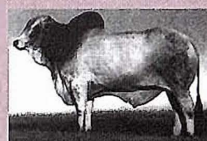
**M.** Developed as a pure meat animal to produce the largest possible cuts of meat.



**N.** Developed as a draft and milk breed this breed is known for its strong feet and legs, large capacity and milking ability.



**O.** Developed in a hot environment this breed's important traits are disease resistance, heat tolerance and hardiness.





### BarnTalk

#### Shooting the Breeze

- How can you tell the breeds apart?
- What new breeds did you discover?

#### Show Me the Beef

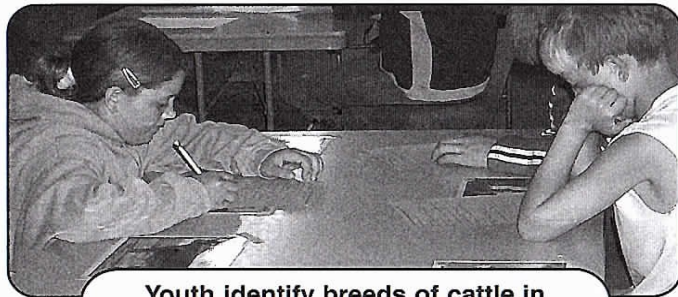
- Which three breeds are popular in your area? Why?
  - How would the efficiency of cattle production be affected if producers could only use breeds from one country... say Scotland? (Write your answer to this question here.)
- 
- 
- 

#### Where's the Beef?

- What beef breed do you and/or your family raise and why?
  - How can you use this information in a livestock judging contest?
- 
- 
- 

#### Beef's Future

- What characteristics are most important to you in deciding what breed you want to raise?
- 
- 
- 



Youth identify breeds of cattle in a skill-a-thon event.

Beef Project Online



[www.N4HCCS.org/beef](http://www.N4HCCS.org/beef)

Breed Associations

**Acknowledgments:** *Breeds of Cattle* by Herman R. Purdy, completed by J. John Dawes, Chanticleer Press, Inc., New York. Activity written by Josh Merrill.

**Resources:** Breed Association Web sites (see Beef Resources page).



### FACTS

### Breed Origins

Angus	..... (Scotland)
Beefalo	..... (U.S., California)
Belgian Blue	..... (Belgium)
Charolais	..... (France)
Chianina	..... (Italy)
Gelbvieh	..... (Austria)
Hereford	..... (England)
Limousin	..... (France)
Murray Grey	..... (Australia)
Piedmontese	..... (Italy)
Pinzgauer	..... (Germany)
Polled Hereford	..... (U.S., Iowa)
Santa Gertrudis	..... (U.S., Texas)
Scotch Highland	..... (Scotland)
Senepol	..... (Virgin Islands)
Simmental	..... (Switzerland)
Zebu	..... (India)

### Beef It Up!

1. Research and write a short paper on your favorite beef breed.
2. Choose three breeds from different areas of the world. Study their characteristics, especially relating to the environment they thrive in. Share with your helper how producers blend these differences to make cattle work better in your environment.
3. Collect ten pictures of beef cattle breeds. Make a matching game to play with your family or friends. Use separate cards so the breed, three characteristics of the breed and where it originated can be matched. You can find great pictures in beef magazines or by writing to breed associations.
4. Talk to a cattle producer and find why the breed they raise was chosen. Give a report on what you find to your family or group.

