



COLLEGE OF AGRICULTURE
AND LIFE SCIENCES
COOPERATIVE EXTENSION



CLOVER COMMUNICATOR YAVAPAI COUNTY 4-H NEWS AUGUST 2017

Prescott Office

840 Rodeo Dr. Bldg. C
Prescott, AZ 86305
Phone: (928) 445-6590
Fax: (928) 445-6593

Camp Verde Office

2830 N. Commonwealth
Drive, Suite 103
Camp Verde, AZ 86322
Phone: (928) 554-8999
Fax: (928) 554-8996

You may view a color copy of this
newsletter online at:

[http://extension.arizona.edu/4-H/
yavapai](http://extension.arizona.edu/4-H/yavapai)

Stacy DeVeau

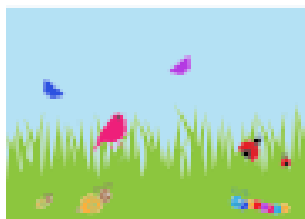
Stacy DeVeau
4-H/STEM
Program Coordinator, Sr.

Shirley Vasovski

Shirley Vasovski
4-H Club Program Coordinator

Lisa Gerber

Administrative Associate



August 1	4HOnline system "Rollover". System will close out year, and set up for next year. System will open for enrollment between August 8 - 15.
August 1	EXPO Committee Meeting 6:30 p.m. Shelby Hansen Room
August 15	Deadline - 4-H/FFA EXPO Indoor Exhibits Entry
August 19	Horse Show at Olsen's in Chino Valley
August 26	1st Annual Greenlee County Showmanship Showdown
August 28	Karen Clingman Memorial Award (Scholarship) and Mandi Michael Memorial Award Deadline
September 1	Verde Valley Fair Entry Deadline
September 1 - 3	EXPO Set-up 9:00 a.m. - 4:00 p.m. Help 4 hours with set-up and tear down to receive \$25 deposit back
September 2	EXPO Exhibitor Meeting 9:00 a.m. Rodeo Grounds
September 6 - 10	4-H/FFA EXPO in conjunction with Yavapai Fair
September 13	Student heritage Keeper Scholarship Deadline
September 10, 23, & 24	EXPO Tear-down
Mid Sept	Horse Committee Election of Officers
October 1	4-H Year begins - Re-enroll soon so you don't miss out on important information



August 2017



Sun	Mon	Tue	Wed	Thu	Fri	Sat
		①	2	3	4	5
6	7	8	9	10	11	12
13	14	⑮	16	17	18	⑲
20	21	22	23	24	25	⑳
27	⑳	29	30	31		

Issued in furtherance of Cooperative Extension work, acts of May 8 and June 30, 1914, in cooperation with the U.S. Department of Agriculture, Jeffrey C. Silvertooth, Associate Dean & Director, Economic Development & Extension, College of Agriculture and Life Sciences, The University of Arizona. The University of Arizona is an equal opportunity, affirmative action institution. The University prohibits discrimination in its programs and activities on the basis of race, color, religion, sex, national origin, age, disability, veteran status, sexual orientation, gender identity, or genetic information and is committed to maintaining an environment free from sexual harassment and retaliation.

UPCOMING EVENTS

Don't forget to check the Yavapai County 4-H Planning Calendar!



<http://extension.arizona.edu/4h/yavapai>

Send any additions or changes to:

yc4h@email.arizona.edu

EXPO

**Prescott Frontier Days Rodeo Grounds Prescott, Arizona
4-H/FFA EXPO**

September 6-10, 2017

Important Dates and Deadlines for 2017

- Online EXPO Entry through ShoWorks is required 2 weeks prior to ear tagging.

Tips for online entry can be found here: [http:// YC4H EXPOonlineentrytips](http://YC4H_EXPOonlineentrytips)

The Premium Book can be found here:

<https://ycexpo.files.wordpress.com/2016/05/premium-book1.pdf>

You can access the entire 4-H/FFA EXPO website at <https://4hffaexpo.com/>

**If you are unable to view something or cannot print what you need,
YOU must communicate Early and Often! Thank you!!!**



UPCOMING EVENTS

EXPO....continued

Prescott Frontier Days Rodeo Grounds Prescott, Arizona

4-H/FFA EXPO Dates & Deadlines

September 6-10, 2017

Important Dates and Deadlines for 2017

Online EXPO Entry through ShoWorks at www.4HFFAEXPO.com will be required 2 weeks prior

April 1, 2017 Online Entries submitted via

4hffaexpo.com by March 25, 2017

- 10am -12pm (PFRG) Market Beef Entry, Weigh-In, and Ear Tagging

June 3, 2017 Online Entries submitted via

4hffaexpo.com by May 20, 2017

- 9am – 12pm (PFRG) All Breeding, Market Swine, Sheep, Goat, & Dog Entry, Weigh-In, and Ear Tagging
- All Small Stock entries due by 12pm

August 15th

- Indoor Exhibits entries Due

September 1st, 2nd, & 3rd

- 9am – 4pm (PFRG) EXPO Set-Up (ALL Member and Families are to Help with this Event)
- Saturday the 2nd 9am EXHIBITOR MEETING

September 6th

- 9am -3:30pm: Check-In for All Species
- 9am – 4:00pm: Weigh-In (All Market Animals Must be Weighed on Official Scale by 4:00pm)
- 5:00pm: Opening Ceremonies (Show Ring)
- 6:00pm: Dog Show (Show Ring)

Sept 7th

- 9:30am: Dairy Goat Showmanship & Conformation Show (Show Ring)
- 9:30am: Pygmy Goat Showmanship & Conformation Show (Show Ring)

- 11:00am: Market Sheep Showmanship (Show Ring)
- 1:00am: Market Beef Showmanship (Show Ring)
- 2:30pm: Market Goat Showmanship (Show Ring)
- 4:00pm: Small Stock Showmanship (Show Ring)
- 6:00pm Fair Opening Ceremonies (Main Grandstands)
- 7:00pm: Market Swine Showmanship (Show Ring)

September 8th

- 8:00am: Small Stock Conformation (TBD)
- 9:30am: Swine Conformation & Breeding Show (Show Ring)
- 12:00pm: Sheep Conformation & Breeding (Show Ring)
- 1:30pm: Beef Conformation & Breeding (Show Ring)
- 3:00pm: Market Goat Conformation & Breeding (Show Ring)
- TBD Round Robin for Small Stock (TBD)
- TBD Round Robin for Large Stock (TBD)

September 9th

- 10:00am: Buyer BBQ
- 12:00pm: Auction (Show Ring)

September 10th

- Barn closes at 4:00pm
- ALL ANIMALS CHECK-OUT 4:00-5:00pm

NOTE: Event times are approximate and may be Subject to change should circumstances require. All shows will start 30 minutes after the previous one if time overlaps.

*All Market Animals must be weighed on the official scale by 4:00pm 9/6/17!

Members with Indoor & Alpaca EXPO Entries

The website for registering your Indoor Exhibits is now open

We are excited for the changes in this department. If you want your item judged with 4-H projects, use this link: <http://yavapaiyouth.fairwire.com/> and choose the 4-H/FFA Indoor (Department) , and then choose on of the following Divisions and Classes:

- 4-H Story
- Clothing and Textiles
- Expressive Arts
- Healthy Lifestyles Education (Classes: Preservation; Cake Decorating; Desserts; Other)
- Educational Displays (note: we may not be able to display all entries due to limited space)
- Science Engineering and Technology

We would appreciate if you would attach the 4-H Indoor Exhibit Display card (on the following page) to your 4-H Projects (even if you enter in open Fair). The deadline for entering a 4-H Indoor Exhibit is [Tuesday, August 15.](#)

Another option is to have your entry judged along with community entries as an **open Fair** item. Use this link <https://www.yavapaifair.com/departments.html> to enter. A few of their departments are listed below:

- Alpaca
- Agriculture/ Horticulture
- Floriculture
- Homemaking / Craftsmanship
- Horse

Great news – there will be paid Premiums for class winners, division winners, and best of show.

Also, for the 4-H Story Contest, there will be paid Premiums for the winners of each age division

- 1st Place \$50.00
- 2nd Place \$30.00
- 3rd Place \$20.00


Leaders, as we near EXPO, the Indoor exhibits will need help with set up and judging.

Parents: If you have time to volunteer with Indoor Exhibits, call 928-777-8284 to find out how you can assist.

Lastly, if you would like to be notified if we have a *Public Speaking Contest* during EXPO, please let me know by sending an email to yc4h@email.arizona.edu.

Attach the 4-H Indoor Exhibit Display card to your 4-H Projects (even if you enter in open Fair).

PRINT ON CARD STOCK (cut to 3"x5")
Two formats available



18 USC 707


4-H Display/Exhibitor Label

Name of Exhibitor: _____

Name of 4-H project: _____

Club: _____

Division _____ Class: _____



18 USC 707


4-H Display/Exhibitor Label

Name of Exhibitor: _____

Name of 4-H project: _____

Club: _____

Division _____ Class: _____



18 USC 707

4-H Display/Exhibitor Label

Name of Exhibitor: _____

Name of 4-H project: _____

Club: _____

Division _____ Class: _____

UPCOMING EVENTS....continued

RV Spaces

The RV Space Reservation Form is on the www.yavapaifair.com website, under the "RV" tab.

RV spaces are limited and will be given on a first-come first-serve basis. Submit your reservation form, and you will receive an invoice the RV spot. RV spaces that are paid on time will be granted, if the space is not paid by the invoice deadline,, the space will be forfeited to the next reservation on the list.



Reservations are for Wednesday thru Sunday, September 6 - 10 for \$50.00. If you bring your RV prior to Wednesday, you will be charged an additional \$10 per night. No RV's can be delivered prior to Tuesday, September 5th and must be removed by Tuesday, September 12th.

SCHOLARSHIPS

The **Mandi Michael Memorial Award** was established in 2005 in honor of a precious little girl who is no longer with us. This award will be given to a deserving Yavapai County 4H/FFA member that meets the requirements as set by Mandi's parents.

Mandi was a beautiful curly haired, blue-eyed, 21 month old little girl. At this young age she showed great interest in agriculture, animals, and the rural lifestyle. Mandi, with her parent's guidance, was following in her brothers and sisters footsteps looking forward to the day when she could be in 4H/FFA.



By establishing this award, the Michael's family will continue to honor Mandi's memory by encouraging other children who share in her same interests.

The recipient's name will be placed on a perpetual plaque. A smaller plaque with the recipient's name will also be given to the recipient.

Requirements:

1. All Yavapai County 4H/FFA members currently exhibiting at EXPO in the beef department are eligible for this award.
2. Members may receive this award one time.
3. Applicants should demonstrate that they are striving to develop an ongoing and growing beef project through a combination of the following areas:
 - Market
 - Breeding
 - Showing at other venues; i.e. SAILA, ANLS
 - Leadership
 - Involvement at the community level and Involvement at the club level

Applications are available online at www.4hffaEXPO.com. The application deadline is August 28, 2017. Recipient will be announced as part of the Opening Ceremonies for the EXPO Auction.

Karen Clingman Memorial Award

The **Karen Clingman Memorial Award** was established in 2000 in honor of Karen Clingman who was a dedicated and knowledgeable Community Club and Project Leader with the Tumbleweed 4-H Club in Chino Valley and Superintendent of the Sheep Department at the Yavapai County Fair for 22 years. Her many hours of volunteer work were endless, very much appreciated and still talked about today.

Karen helped not only the leaders and children from her own club, but all clubs with many 4-H projects, including sheep, rabbits, cattle, poultry, home economics and records books. She spent hours demonstrating the proper method of shearing sheep and lending her clippers to other clubs. Academics was high on her list for helping all youth succeed in life.



The Karen Clingman Memorial Award is given to the outstanding sheep member at EXPO each year. The recipient's name will go on a perpetual plaque. A smaller plaque with the recipient's name will also be given to the recipient.

Requirements:

1. All Yavapai County 4-H/FFA members currently exhibiting at EXPO in the sheep department are eligible for this award.
2. Members may receive this award one time.
3. Applicants should demonstrate that they are striving to develop an ongoing and growing sheep project through a combination of the following areas:
 - a. Market
 - b. Breeding
 - c. Showing at other venues; i.e. SAILA, ANLS
 - d. Leadership
 - e. Involvement at the community level and at the club level.
4. Submit your 4-H/FFA record book with the application. Information should be current as of date of submission. Applicants are encouraged to submit up to three years' worth of information.

Applications are available online at www.4hffaexpo.com. **The application deadline is August 28, 2017. The recipient will be announced as part of the Opening Ceremonies for the EXPO Auction.**

HAPPY BIRTHDAY TO OUR AUGUST CERTIFIED VOLUNTEER LEADERS



Shauna Hanus
Traesa Santori
Travis Jump
Crystal Killian

August 16
August 20
August 28
August 31



Greenlee County Showmanship Showdown



August 26, 2017
Greenlee County Fairgrounds
8:00am



EIGHT BUCKLES TO WIN!

Early Bird Registration: \$20.00 due by August 11th at 6:00pm.

Late Registration: \$25.00 Accepted up until 7:30am August 26th.

Registration for ALL Greenlee County 4-H and FFA members will be \$5.00 off above set rates.

A paper registration form can be picked up from Duncan High School Ag. Dept. or Greenlee County Cooperative Extension Office.

Questions can be directed to:

Cheyenne Colville, Greenlee County Cooperative Extension Agent,
cheyannek@email.arizona.edu or (928)359-2261

Kayla Sexton, Duncan High School FFA Advisor, ksexton@duncanschools.org or
(928)792-3037

This is a showmanship only competition. There will be no market classes. This is open to all youth in Greenlee County and surrounding areas.

2017 Greenlee County Showmanship Showdown Registration

Participants Name: _____

Age Division: Jr. (9-13 as of Jan. 1) _____ Sr. (14-18 as of Jan. 1) _____

Species: _____

Group affiliation: FFA _____ 4-H _____ Other _____

County of residence: _____

Phone number: _____

E-mail: _____

Mailing Address: _____

By signing this form, I understand that my animal must be at the Greenlee County Fairgrounds by 7:00 a.m. Saturday, August 26th to be eligible to compete. Any "no-shows" who have pre-registered will not be refunded their registration fee. I also understand that the early-bird registration rate only applies if payment and registration are received by the early-bird deadline of 6:00 p.m., Friday, August 11th.

Participant signature: _____

Date: _____

Parent/ Guardian signature: _____

Date: _____

Entry fee: **Amount** (_____) **Method** (_____)

Collected by: _____

SHOOTING SPORTS

Yavapai County Cooperative Extension is interested in growing the county shooting sports program for this next year.

To determine our needs, let us know your interests in the following disciplines:

Rifle _____
Archery _____
Pistol _____
Shotgun _____

We have identified two ranges that are willing to work with us (Prescott Trap and Skeet and Chino Valley Shooting Facility), and are exploring ways to fund shooting sports certification of our volunteers.

Parents: Let us know if you would be interested in receiving information to become certified and for which discipline.

Rifle _____
Archery _____
Pistol _____
Shotgun _____

Parents: Are you already a 4-H certified volunteer? If not, those requirements will need to be met. Please indicate your interest below.

_____ Yes, I would like to receive information on how to become a certified 4-H volunteer.

Youth Name(s): _____

Adult Name(s): _____

Primary Club: _____



Return via email or to your Club Leader for the Extension Office.
We hope to see you on the range soon!

If you are interested, please register and let us know your thoughts and interest in participating in a 4-H program.

See you at the range!

TheDailyCourier

dcourier.com

Local Sports in Brief

Desert Roses to host shotgun shooting sports field day Aug. 20 in Dewey

The Desert Roses women's shotgun program at the Ben Avery Clay Target Center will be heading north Aug. 20 to host a shotgun shooting sports field day at the Prescott Valley Trap and Skeet Club in Dewey. This is an introductory event, designed to teach women shooters of all skill levels about firearm safety and the fundamentals of marksmanship.

Participants also will learn about the history of shotguns, firearm framework, ammunition, basic shooting technique, and a shooting sports overview, followed by an afternoon in the field with individual and group instruction from Ben Avery Clay Target Center range masters.

The event is 9 a.m. to 2 p.m. A \$10 registration fee includes eye and ear protection, loaner shotguns, ammunition and targets. The Prescott Valley Trap and Skeet Club is located at 10800 AZ-69 in Dewey. For more information about the Ben Avery Clay Target Center, visit www.azgfd.com/shooting or call (623) 434-8119.

SMALL STOCK EDUCATION

The Colorado River Small Stock Show will be here before you know it! Test your knowledge by answering the questions below.

Colorado River Small Stock Show

RABBIT QUIZ

DO NOT WRITE ON THIS QUIZ! Use the Answer Sheet!

1. A written record of a rabbit's family is called:
A. Crossbreeding B. Mastitis C. Pedigree D. Charting
2. How many fur classes are there in the ARBA?
A. 1 B. 2 C. 3 D. 4
3. Teeth that are mis-formed are called:
A. Braces B. Malocclusions C. Tusking D. Molars
4. How many groups of body types are there?
A. 5 B. 12 C. 2 D. 10
5. Rabbits are:
A. Omnivores B. Vampires C. Herbivores D. Carnivores
6. The art of selecting, grooming and presenting a rabbit properly at a show is:
A. Showmanship B. Drama C. Trying D. Practicing
7. When a rabbit gives birth it is called:
A. Candling B. Kindling C. Molting D. Angora
8. A tattoo should be placed in which ear for identification purposes:
A. Left B. Right C. Either D. None
9. Mating animals that are closely related is called:
A. Inbreeding B. Outbreeding C. Re-breeding D. Cloning
10. A male rabbit is called a:
A. Boy B. Buck C. Boar D. Doe
11. A rabbit's gestation period is:
A. 50-60 days B. 6 months C. 28-35 days D. 125 days
12. A baby rabbit is called a:
A. Baby B. Appetizer C. Bunny D. Kit
13. ARBA stands for:
A. American Rabbits and Bunny Association C. Arizona Rabbit Breeders Association
B. American Rabbit Breeders Association D. All Rabbits Become Actors
14. This body part serves as a rabbits cooling system:
A. Mouth B. Fur C. Ears D. Feet
15. The dewlap is located below the rabbit's:
A. Foot B. Heart C. Hip D. Chin

Colorado River Small Stock Show

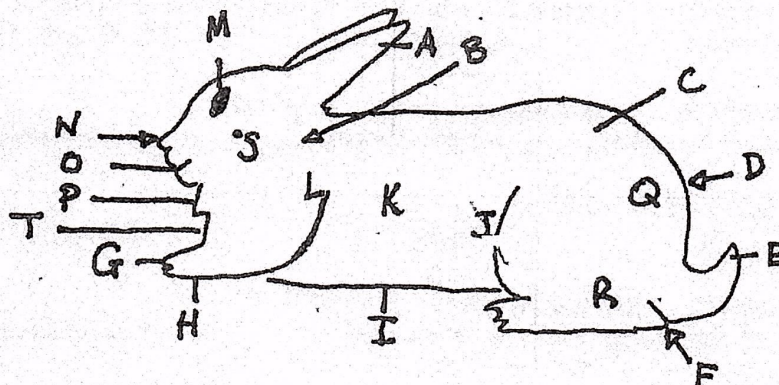
RABBIT QUIZ

DO NOT WRITE ON THIS QUIZ! Use the Answer Sheet!

16. Californians have how many varieties?
A. 12 B. 4 C. 1 D. 22
17. The ideal ear length of a Netherland Dwarf is:
A. 2 in. B. 2 ft. C. 5 in. D. 7 in.
18. Which is easier for a rabbit to withstand:
A. Heat B. Cold C. Tornado D. Tuesday
19. The loin of a rabbit is located between which two body parts:
A. Ribs and Hips B. Hip and Tail C. Heart and Lung D. Ears
20. Which of these causes mange?
A. Overbreeding B. Fungus C. Snuffles D. Mites

MATCHING: Match the letter of the correct body part to the number on the answer sheet. For example if you think the body part T is the eye, you write T on line 45.

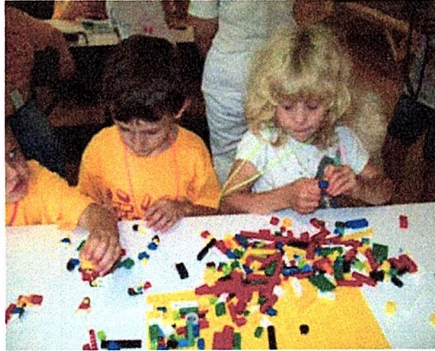
26. Loin
27. Belly
28. Tail
29. Nose
30. Ear
31. Hip
32. Chest
33. Neck
34. Rump
35. Toes
36. Leg
37. Dewlap
38. Foot
39. Shoulder
40. Flank
41. Cheek
42. Mouth
43. Rib
44. Hock
45. Eye



Lego* Craft



By Janine Yeske, 4-H Youth Development Educator, Jefferson County (OSU Extension)



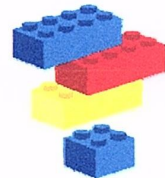
"In 1949, Danish carpenter Ole Christiansen created a set of interlocking red and white blocks, the first of what would go on to become Legos. It wasn't until 1958 that the Lego* Company (its name derived from the Danish words for 'play well') patented the small bricks. The genius was in the simplicity of the unassuming blocks, which allowed children to create freely without limits and in nearly endless combinations. (Just six blocks could be combined in 102,981,500 different ways".) Allie Townsend, Time Magazine, 2011.

More than 400 billion Legos have been produced since 1949, which means there are 62 Legos for every one of earth's inhabitants. **"What will you do with your 62 blocks?"**

Here are a few ideas:

- 1) Create a car. It can be as simple or fancy as you want. Did the design come to you as you were building or did you know what you wanted from the very start?
- 2) Create a maze. Make a confusing set of pathways of our Legos and then use a minifigure to find its way through the maze.
- 3) Create your favorite Olympic moment or sport out of Legos.
- 4) Create a mixed media object. Mix your Legos with any of the following items and see what you can come up with. Here are some items to get your creative juices flowing: beads, cardboard, fabric, glue, marbles, plastic, rocks, ice, gems, paper, or wire. Now add some ideas of your own.
- 5) Create a shadow. Build something that you think will create a great shadow. Now take your creation to a sunny spot, inside or outside on a sunny day. Look at the shadow it casts. Move it around until it makes a shadow you like best. Look at the shadow on the ground compared to on the texture of a trunk of a tree. Take a picture of the shadow only.
- 6) Create a creature. A creature is a living organism. It can be a bug, a bird, an animal, a plant, or even something out-of-this-world. Then tell your friends about its habitat... where it lives, what it eats, etc.
- 7) Create a tool. When you are done, tell others what the tool is and what it will be used for.
- 8) Create the tallest tower. This structure must be able to stand alone without anyone supporting it. Measure it and share how tall it is.
- 9) Create a flag. Tell about why you chose this flag, what the colors mean, and where it flies.
- 10) Create spring. Spring is the transition between winter and summer. What does spring mean to you? Create something that reminds you of spring and tell your friends about it.

After you've completed your creations, go around the room and look at what others have created. Then, take a few minutes to share with each other about your creation. Who would have ever known so much fun could come from just a few blocks?



** "No endorsement is intended for specific products nor is criticism meant for products not mentioned."*

SUBMITTING TO CLOVER COMMUNICATOR

To all 4-H club leaders and members

If any clubs, youth, or leaders have any club updates, events, or 4-H stories they would like to share in the Clover Communicator please send them to me by the 25th of every month. We would love to hear what your club is doing in Yavapai County. Pictures are always welcome! In your information, include the 5 W's: Who, What, When, Where, and Why. If you are promoting a 4-H related event, also include contact information or how participants can get involved.

The Clover Communicator is published on the 4-H website AND the Yavapai County 4-H Facebook page. Many people look at the newsletter on the website and FB page to find out what clubs are doing and where they want to join. It's an excellent way to promote your club and members.

Send your information to lgerber@cals.arizona.edu and we'll include it in the Clover Communicator!

ListServ Reminder: Do Not Delete

The ListServ is used by the Extension office to send out important information to 4-H members and leaders. Please, do not delete anything before reading it if the mail is from the ListServ. We have had many complaints about community members not receiving any information about events, only to find out they never read the Listservs because they do not recognize who it is from. Any ListServ emails are sent

Newsletter Printed Copy Subscription

All newsletters are emailed and also posted on the Yavapai County 4-H website under the newsletter tab. If you would like to receive a copy of the newsletter mailed to you, the cost is \$21 per year for an annual subscription of 12 issues (which is cost recovery only). Late subscriptions will not be prorated. The subscription year runs from October 1 through September 30.

Make checks payable to University of Arizona and mail to:

University of Arizona Yavapai County Cooperative Extension
2830 N. Commonwealth Drive #103
Camp Verde, AZ. 86322

Name _____
Address _____
City, State, Zip Code _____

The University of Arizona
Cooperative Extension, Yavapai County
840 Rodeo Dr., Bldg. C
Prescott, AZ 86305

Return Service Requested



**We would love to hear from you! Email your club's activities
to lgerber@cals.arizona.edu or submit by mail to:**

Lisa Gerber, Cooperative Extension, Yavapai County
2830 N. Commonwealth Dr. Suite 103, Camp Verde, AZ. 86322